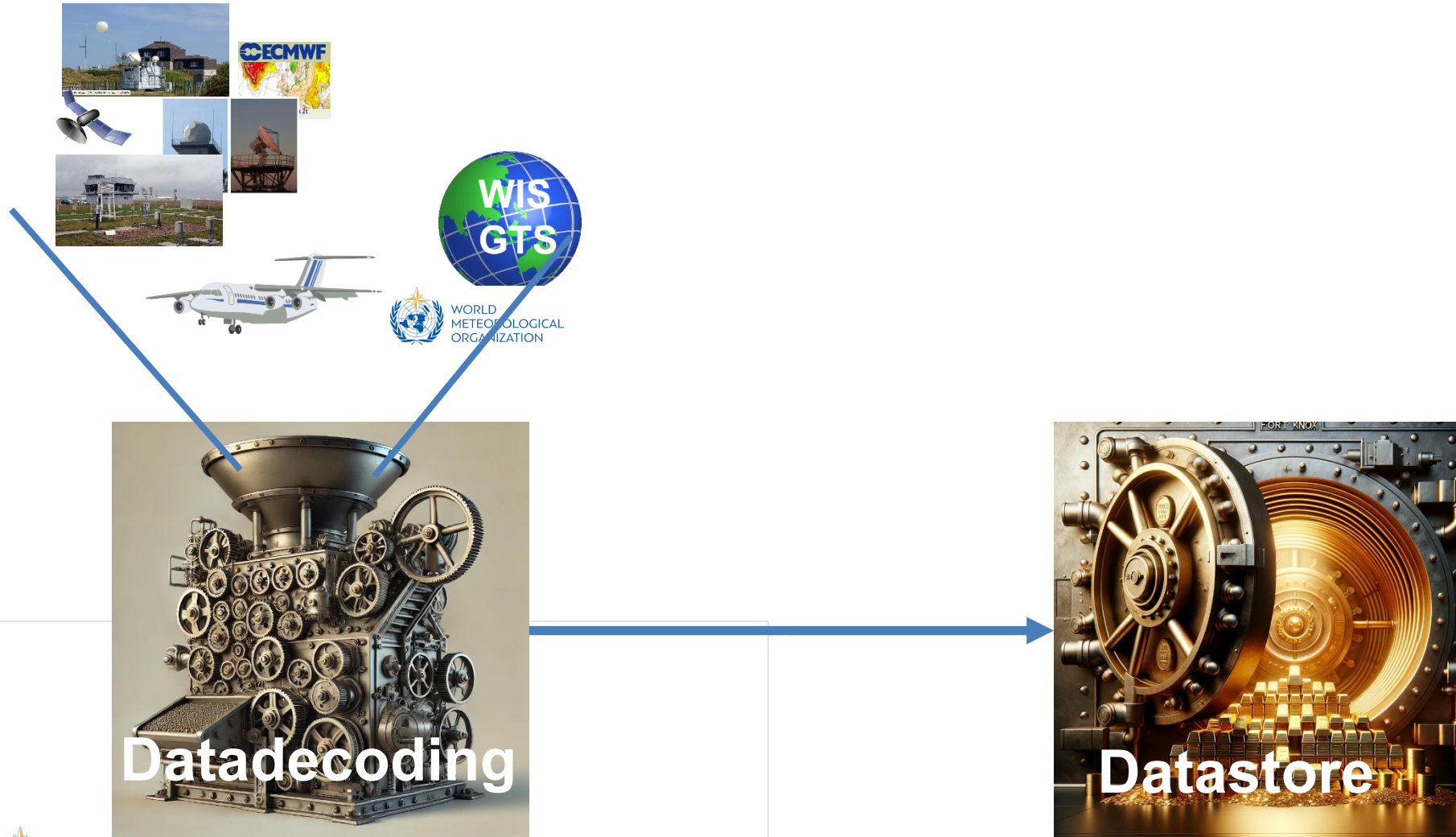


# WIS2 Implementation Support GISC Offenbach

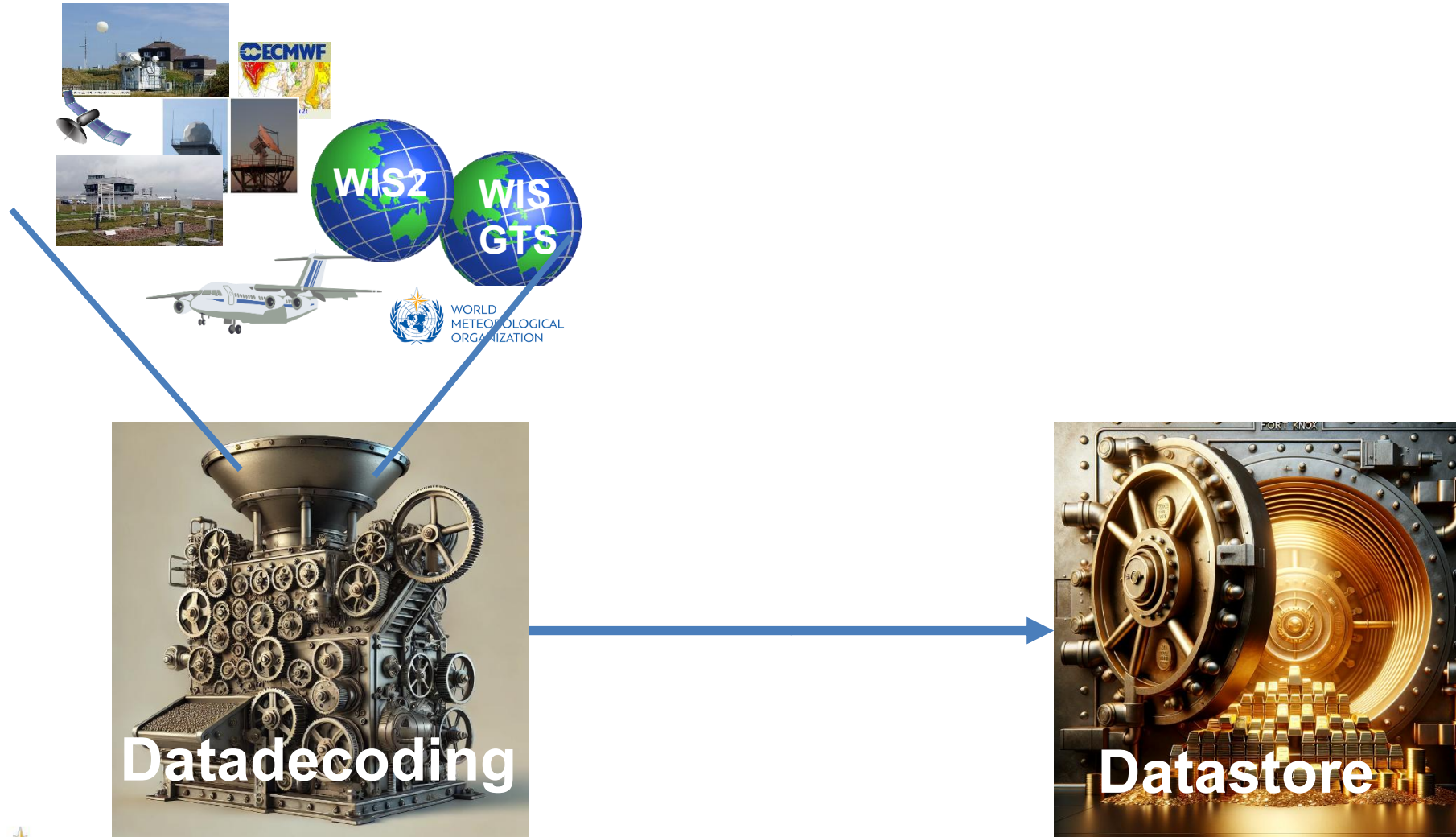
# Overview

- Benefits of connecting to WIS2
- Support from GISC Offenbach
- WIS Portal of GISC Offenbach
- Demonstration

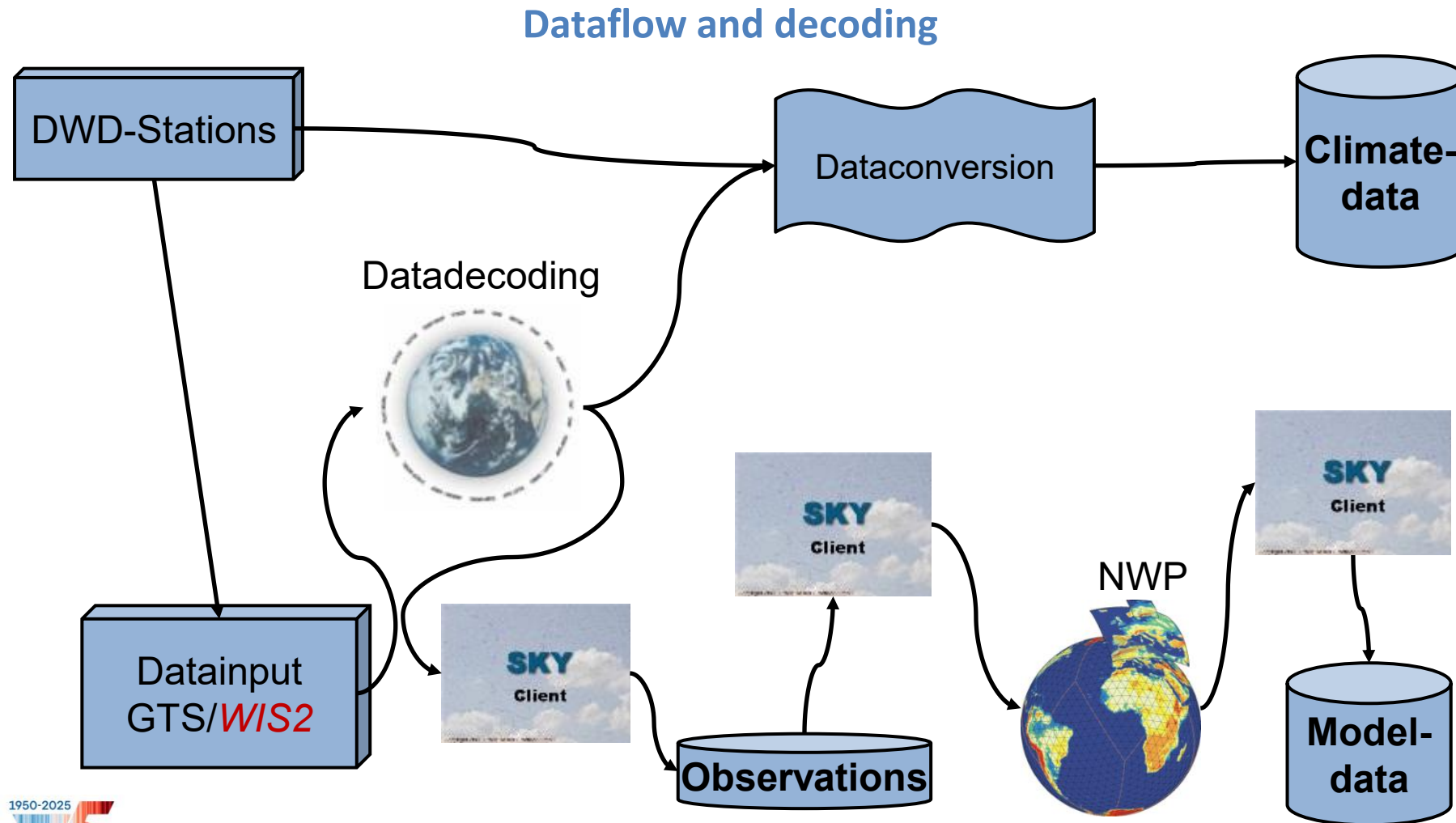
# Benefits of connecting to WIS2



# Benefits of connecting to WIS2

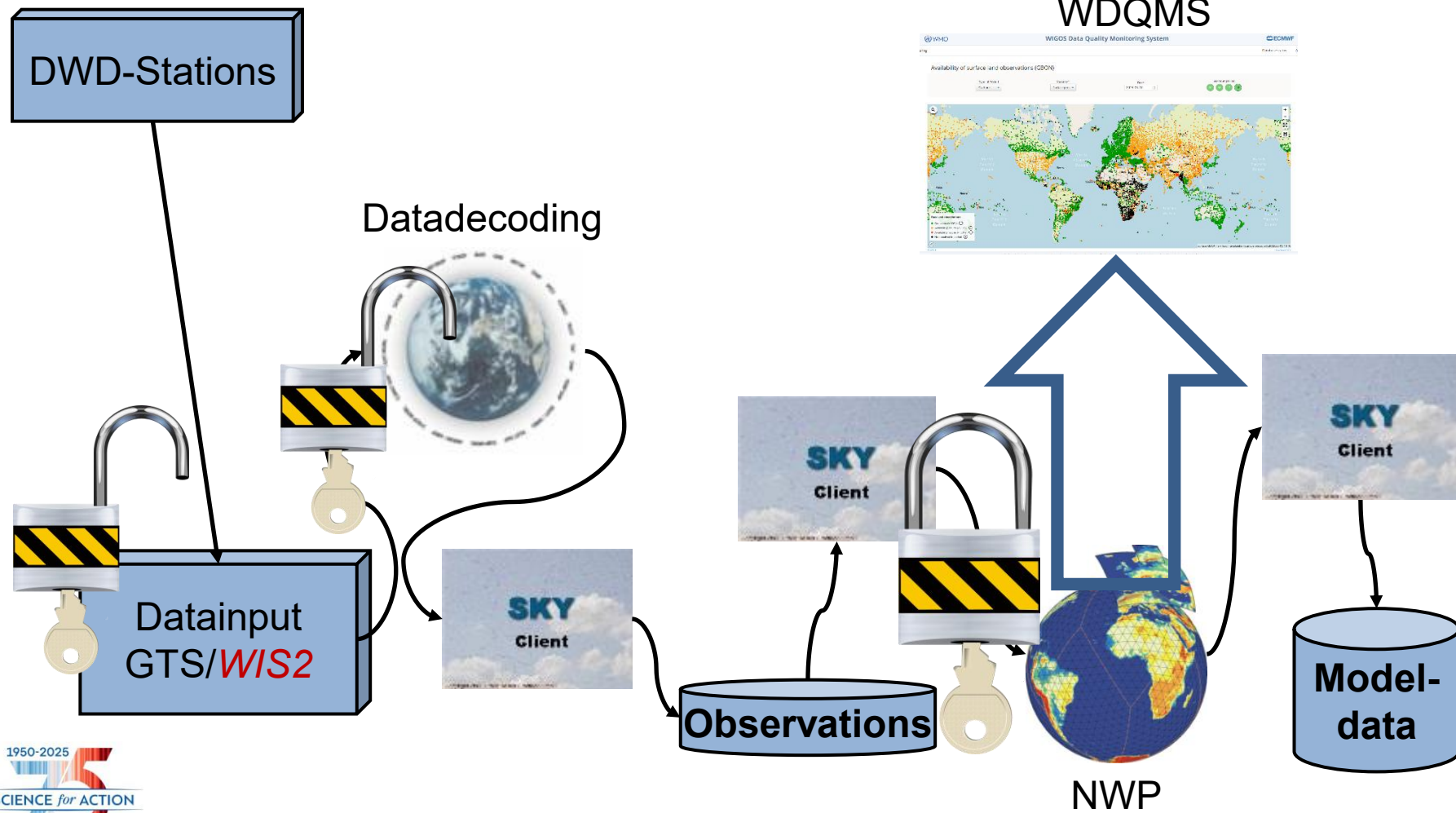


# Benefits of connecting to WIS2



# Benefits of connecting to WIS2

## Dataflow and decoding





# Benefits of connecting to WIS2

## Your Road to WIS2

Setup / Implement WIS2 Node

Register Centre ID with WMO

GISC Of checks if your WIS2 setup follows the standards

Provide Metadata for your data

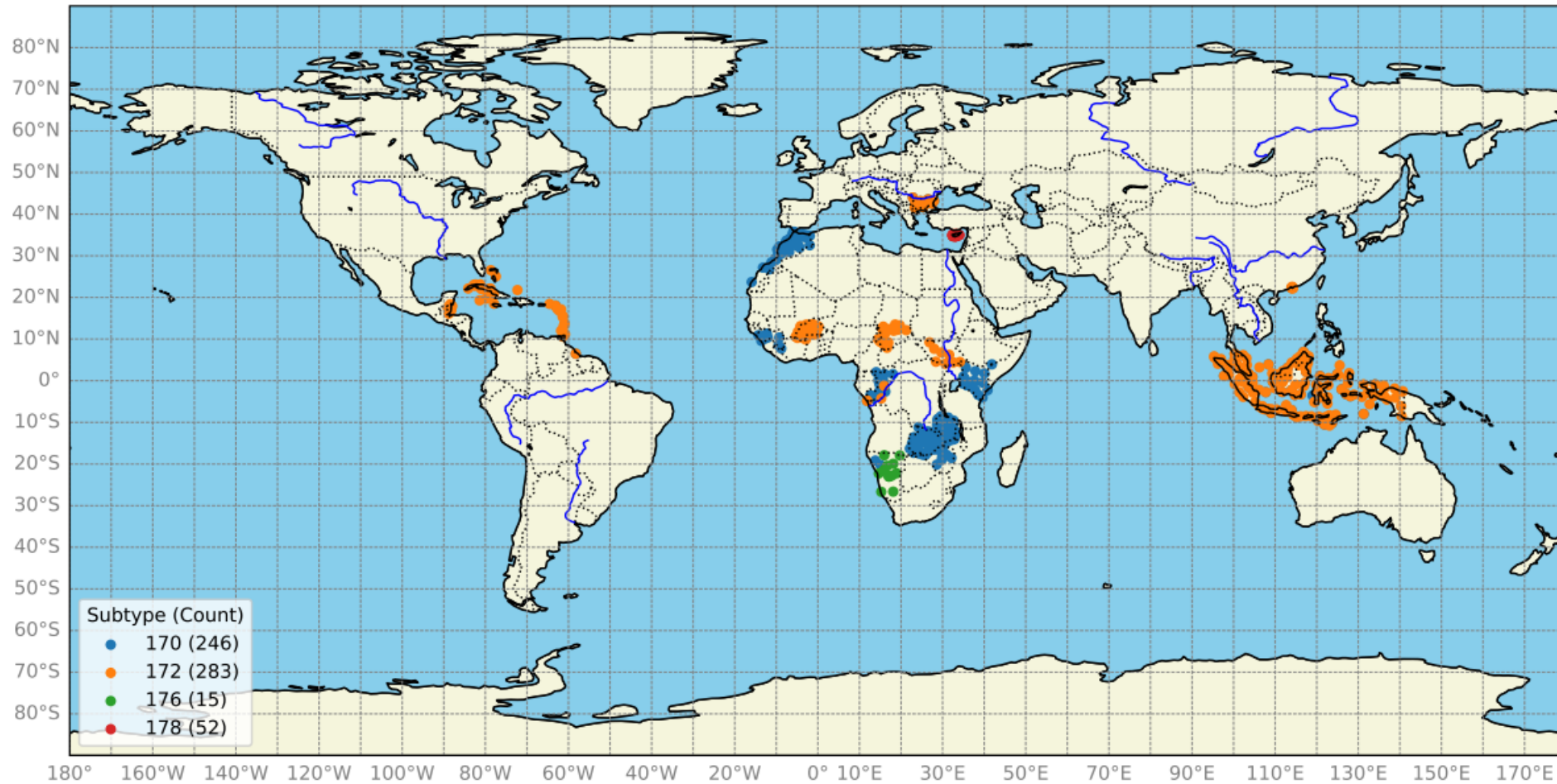
Publish data

- Check if needed data is available
- If not contact GISC Of
- If yes start using data from WIS2
  - Pywisdownloader or own implementation
- GTS data is available already

**If you are happy with your WIS2  
there is a procedure to switch off your MSS...  
(....if you are not an RTH)**

# Benefits of connecting to WIS2

4DVAR: All WIS2 SYNOP Observations - 14 March 2025



Source: ECMWF

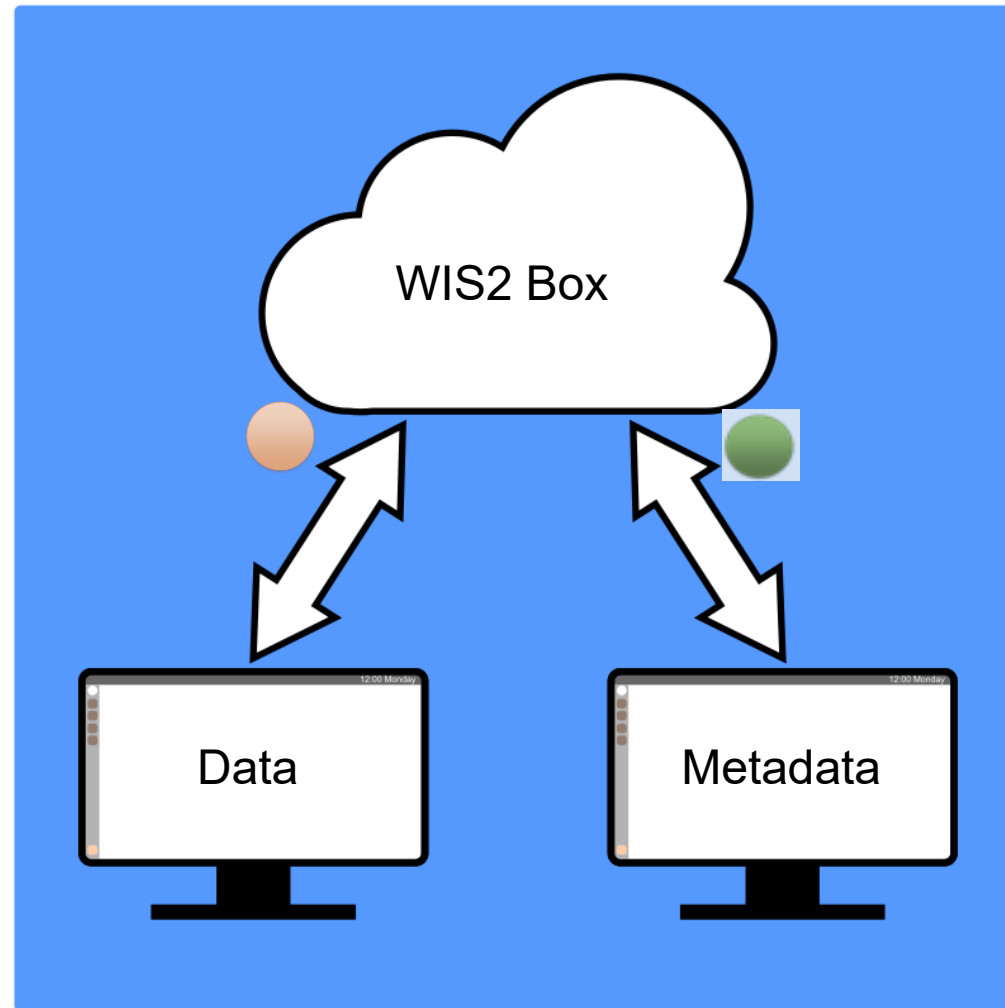


# Support from GISC Offenbach

- Monthly Q+A
- Training planned for Q4/2026
- Support via [wis@dwd.de](mailto:wis@dwd.de)
- Check compliance of WIS2 Nodes and assist in solving problems
- Provide different services

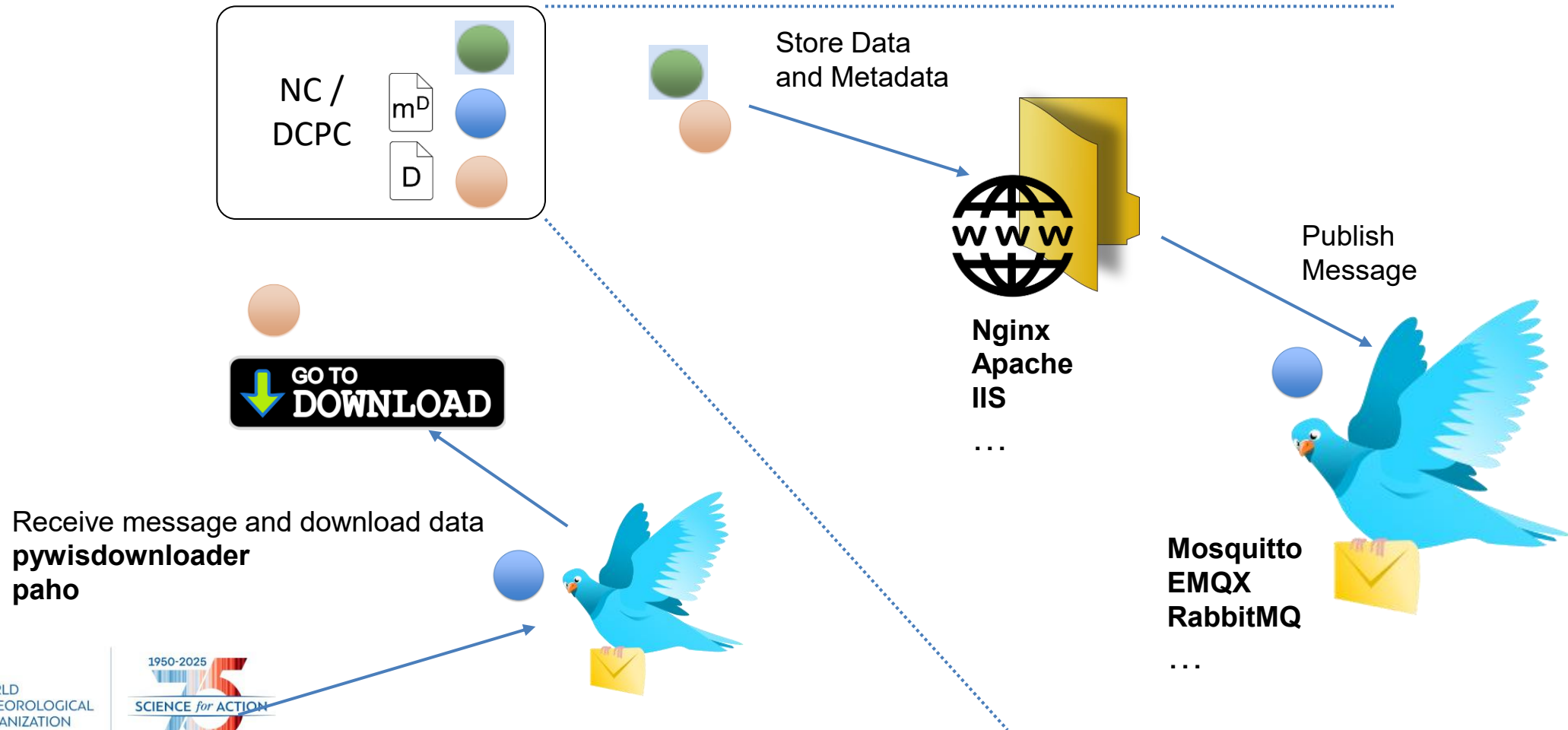
# Support from GISC Offenbach

## Use WIS2Box



# Support from GISC Offenbach

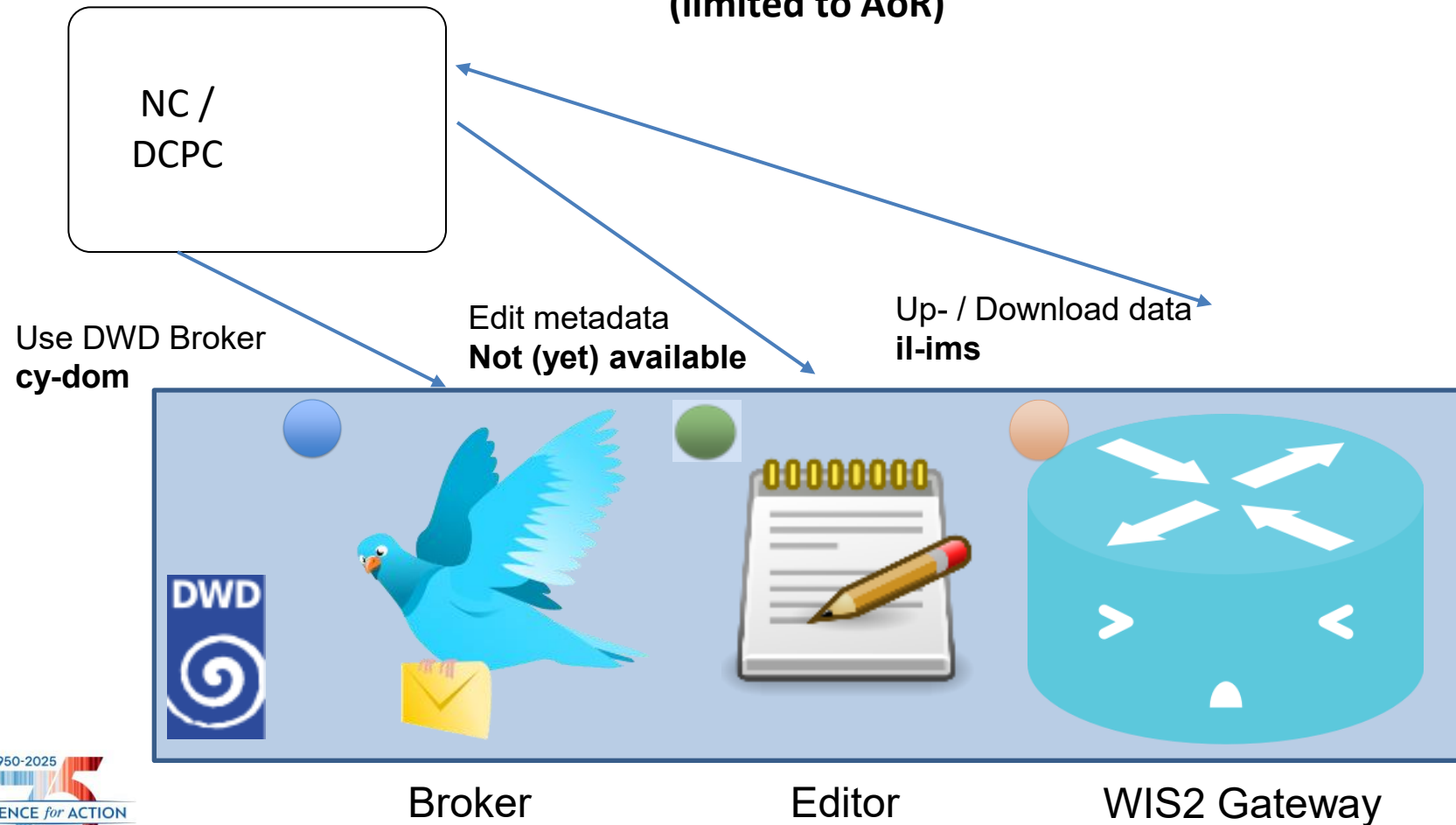
## Use own solution



# Support from GISC Offenbach

## Use services from GISC Offenbach

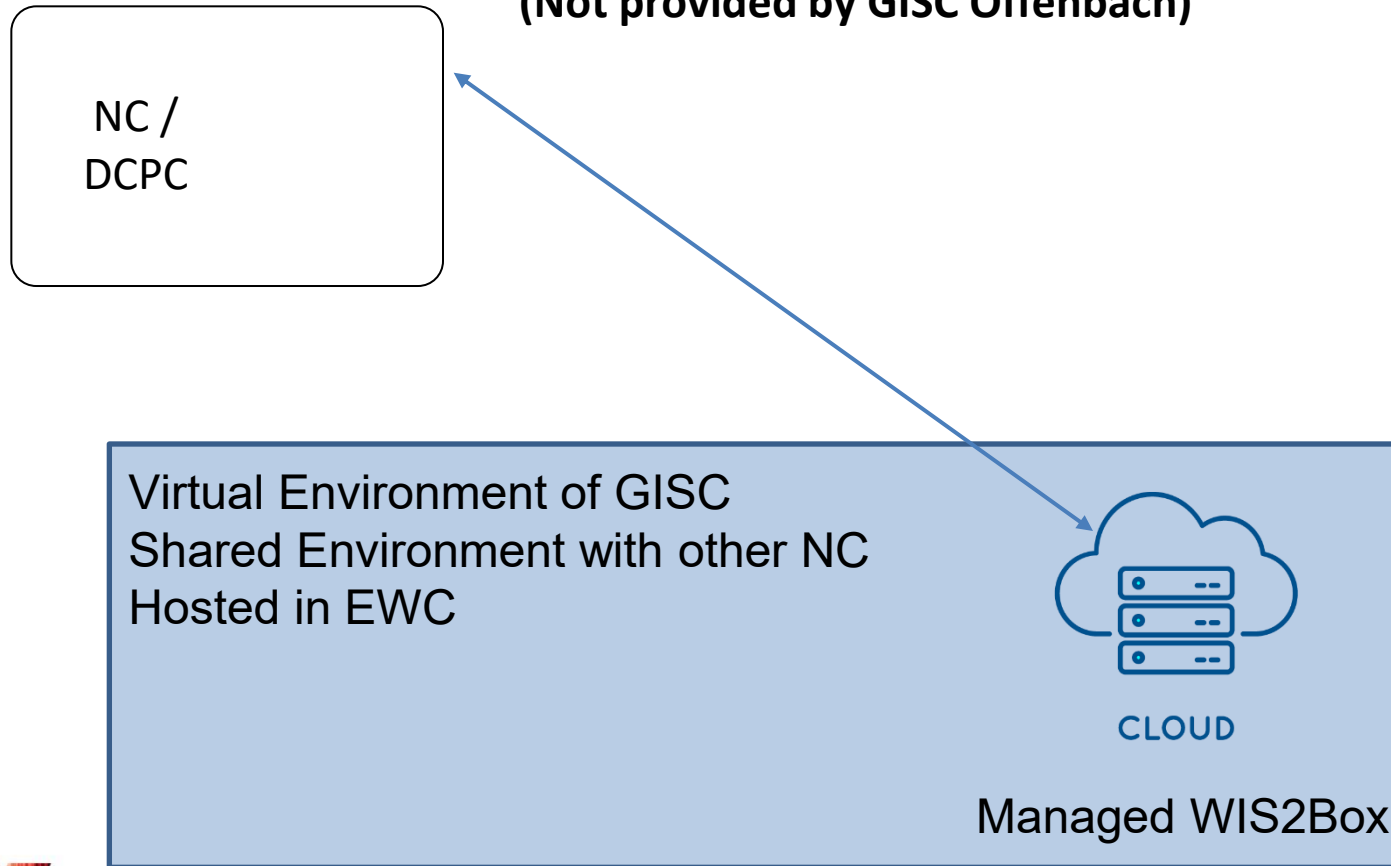
(limited to AoR)



# Support from GISC Offenbach

## Shared Services

(Not provided by GISC Offenbach)





# WIS Portal of GISC Offenbach

<https://gisc.dwd.de>

- **WIS2 Catalogue** fully integrated
- Work in Progress:  
**Internet subscriptions**  
for WIS2 data

**Deutscher Wetterdienst**  
Wetter und Klima aus einer Hand

HOME SRU GEOSS RSS SUBSCRIPTIONS METADATA ? SIGN IN/REGISTRATION

### WIS-Portal

Search the WIS:

☐ combine search terms

Search

---

Showing results for: **Full Text Search (Terms combined with OR): synop**  
49 matches - currently showing records 1 - 10  
Filter by: [Region](#) | [Originator](#) | [Keywords](#) | [License](#) | [Metadata-Type](#) | [Creation Date](#) | ☐ Titles only | [≡](#) | [↺](#)

Result rows per page:



#### Hourly synoptic observations from fixed-land stations (SYNOP) (bz-nms)

Product: **urn:wmo:md:bz-nms:belize-hourly-synop**  
Originator: **National Meteorological Service of Belize**  
License: **core**  
Topic: **wis2 > bz-nms > data > core > weather > surface-based-observations > synop**  
[Keywords](#) | [Theme Keywords](#)  
[Show product details...](#)

WIS portal uses cookies for the services provided to you. By continuing, you consent to the use of cookies. For more information, please refer to our data protection statement:  
[c Offenbach Data Protection](#)

# Demonstration

<https://wis2.dwd.de/gdc>

<https://wis2.dwd.de/gdc/collections/wis2-discovery-metadata/items?q=dwd>

<https://gisc.dwd.de>



WMO OMM

World Meteorological Organization  
Organisation météorologique mondiale

Thank you  
Merci  
Gracias  
ارکشی  
谢谢  
Спасибо