

# WMO Capacity Development Panel

## WMO Framework of Engagement for Member-to-Member (NMHSs) Support

Moyenda Chaponda

Head, Resource Mobilization and Development Partnerships

Ana Laura Zuanazzi

Associate Partner Coordination Officer

**24th, September  
2025**



# WMO Framework of Engagement for Member-to-Member (NMHSs) Support

## Why?

To deliver direct support to Members, WMO engages with partners for implementation of activities

NMHSs are often hired/engaged by WMO for implementation of activities

The selection of NMHSs is not transparent, which results in low diversity of partner NMHSs

Low opportunities of South-South collaboration

Regional imbalance

Low diversity of partners

# WMO Framework of Engagement for Member-to-Member (NMHSs) Support

## Current situation

Only around **10 NMHSs** are implementing partners in WMO activities

Engagement with partners is the only area of activity implementation **not governed** by a **formal procedure**

NMHSs from the **global south** are **exceptional** cases

Significant **discrepancies** among NMHSs (in terms of geography, resources, and governance) may **affect the suitability** of interventions

# WMO Framework of Engagement for Member-to-Member (NMHSs) Support

## Purpose of the Framework



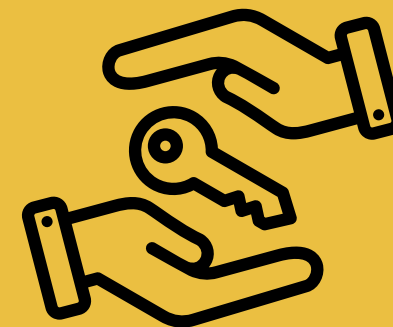
Ensure **transparent** and structured process for NMHS engagement



Promote **South -South** , Triangular, and peer-to-peer **cooperation**



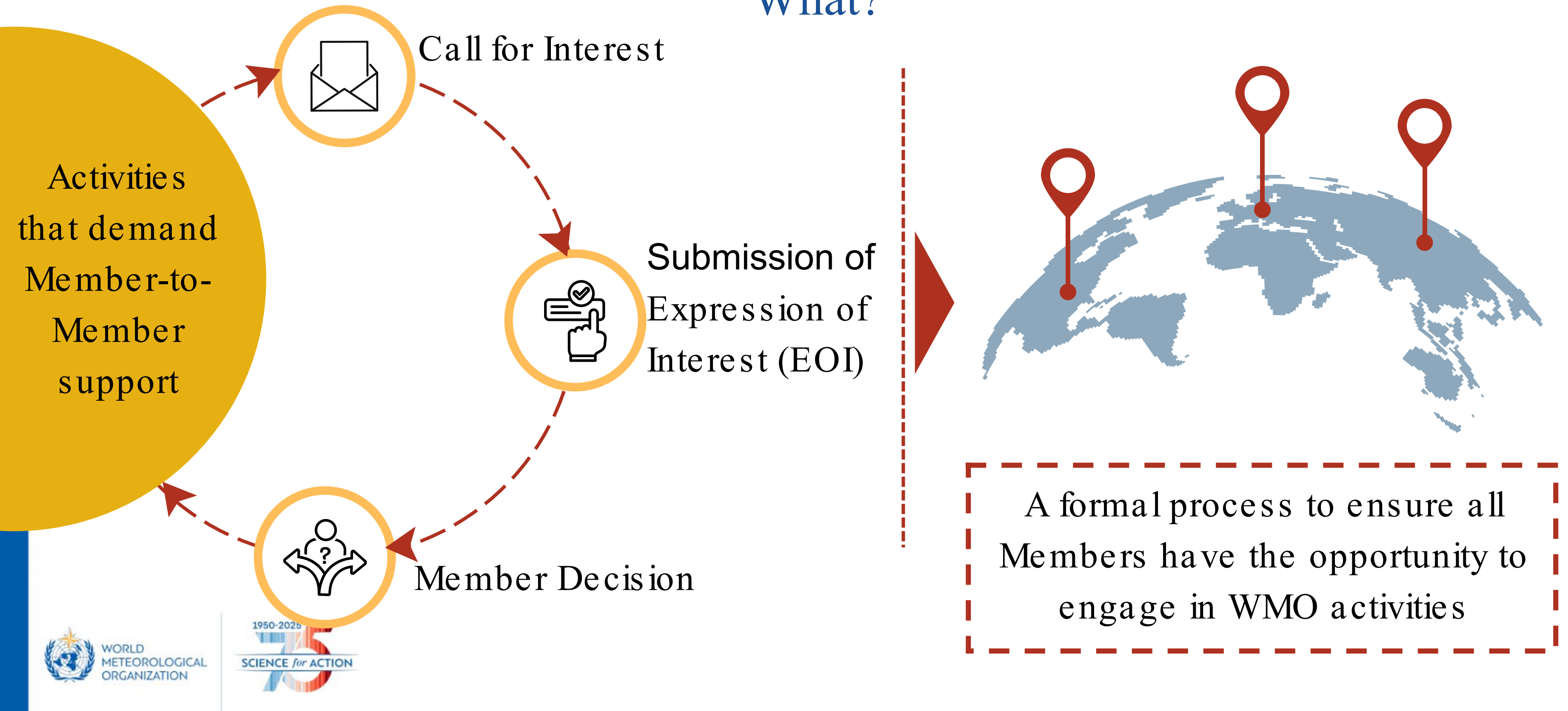
Match technical **expertise** with Members' needs



Strengthen equity, **ownership** , and inclusivity in WMO projects

# WMO Framework of Engagement for Member-to-Member (NMHSs) Support

## What?



# WMO Framework of Engagement for Member-to-Member (NMHSs) Support

## Consultation Insights

1st draft



Consultations



Final  
Version



Pilot for  
implementation



### Concerns raised

- 1) NMHSs are not fully aware of their capacity to engage in Member-to-Member support.
- 2) Need for guidance and facilitation to help themselves position as partner.

# WMO Framework of Engagement for Member-to-Member (NMHSs) Support

## What We Ask from the Panel

How to support less-experienced NMHSs?

How to ensure regional inclusivity in engagement?



Goal: Effective, sustainable rollout of the Framework



Thank you!



# WMO Framework of Engagement for Member-to-Member (NMHSs) Support

## Objectives



Systematize  
and  
**Strengthen  
Engagement**



**Formalize**  
how NMHSs  
are selected  
and engaged



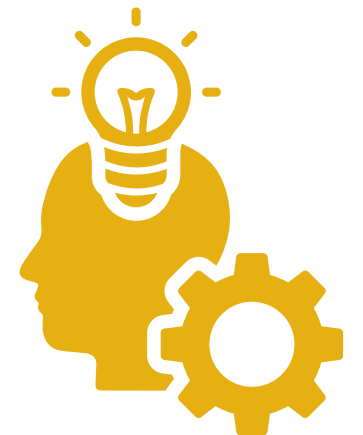
Promote  
Member-to-  
Member  
**Cooperation**



**Diversify**  
participants  
beyond the  
usual  
providers



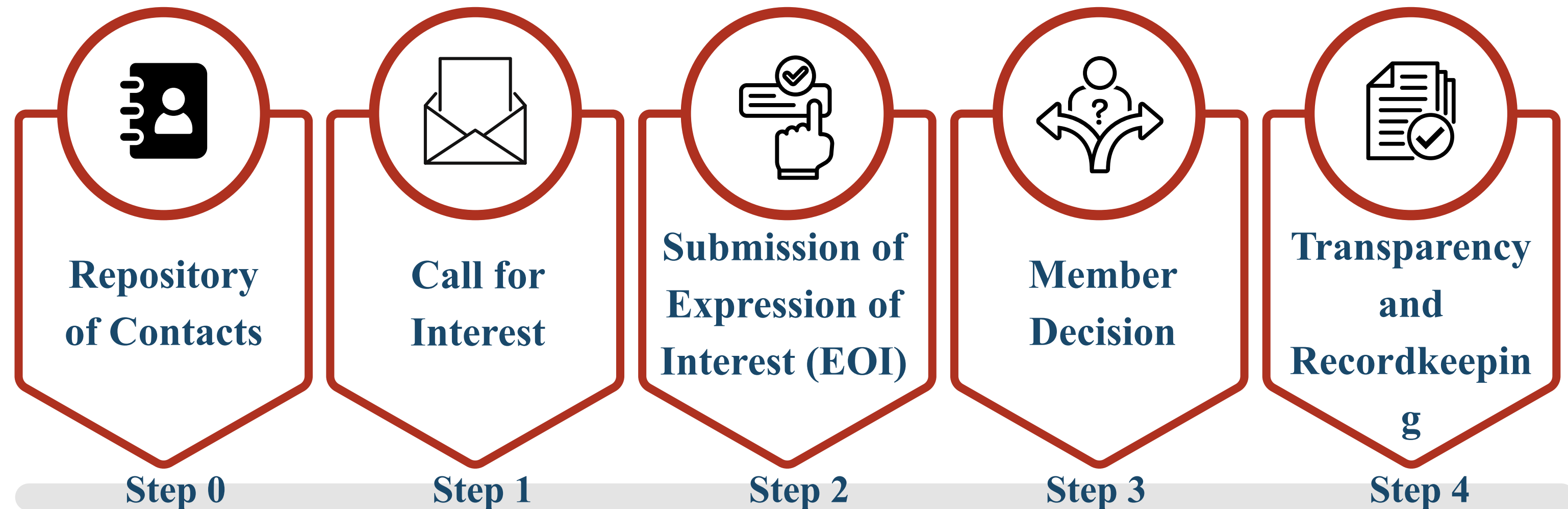
**Institutionalize**  
and Sustain  
Contributions



Ensure long-  
term  
**capacity  
building and  
resilience**

# WMO Framework of Engagement for Member-to-Member (NMHSs) Support

## Steps



Members nominate  
Focal Points, listed by  
WMO DPO

WMO APC issues  
a call using the  
Invitation  
Template

Interested NMHSs  
submit detailed  
EOIs using the  
Application  
Template

Beneficiary NMHS  
selects a support  
provider, with  
justification

All documents  
made available to  
ensure fairness and  
accountability