

Synoptic.

Sharing Earth's Data

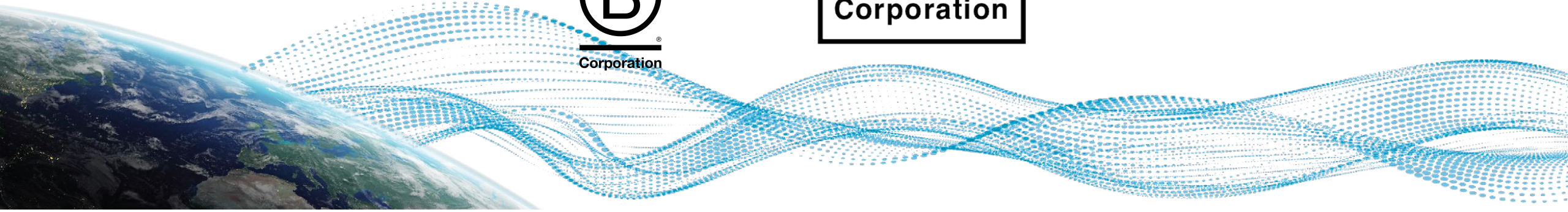
**Sustainable WIS 2.0 Services
Empowering NMHS's to do more with less**

Certified



Corporation

**Public Benefit
Corporation**



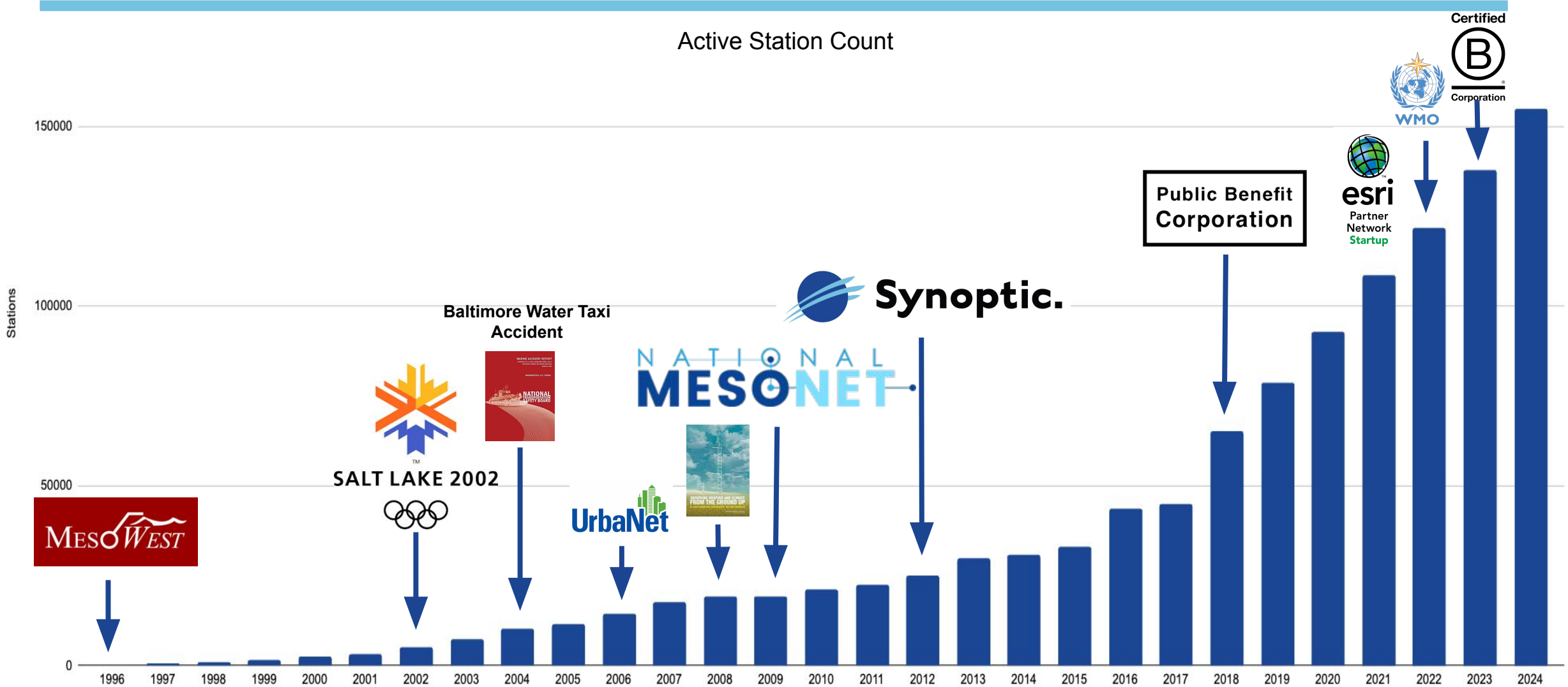
Public Benefit Corporation and B Corp

Synoptic is committed to provide expanded access to environmental data to enhance public safety, improve the productivity of government agencies and commercial entities, and assist in research and educational initiatives to advance the understanding of Earth systems.

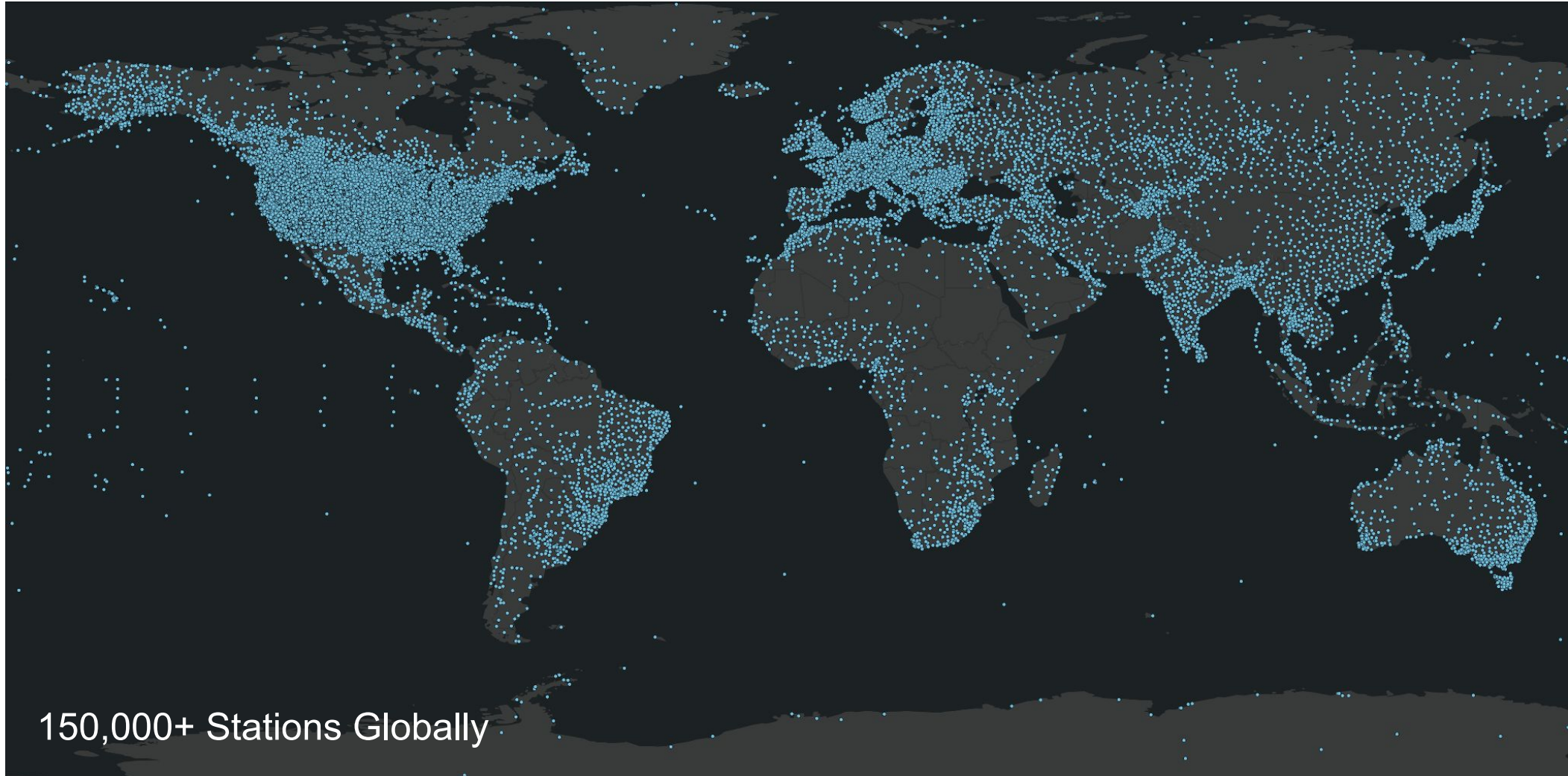
- 20 years experience in observational data aggregation, quality control, and data management
- Contracted with NOAA as a foundational data partner
- WMO implementation partner for UK/US Global Cache and WIS 2.0 Box for the USA (NOAA/NWS Stations)

	Daily Observations	144M+
	Observation Stations	150,000+
	Data Providers (networks)	320+
	Data Parameters	140+
	Daily API Data Requests	10M+

Synoptic's History



Active Stations Available through Synoptic



Data Discovery Tool (viewer.synopticdata.com)

Free Features:

- Global Data Discovery Tool For All
- Access any Open Station/Network Data Display
- Detailed Metadata
- View, Graph, Explore Data from around the world
- Download open data sets

Premium Value Added Features:

- Free for WIS 2.0 Synoptic Customers
- Real-Time Dashboards
- Real-Time Alerts using SMS and Email
- Health Monitoring of entire network



Synoptic. 
Data Viewer

WIS2 Services Offering

Synoptic offers a range of options for WIS2 Node

- **WIS 2.0 in a Box (On-Prem or AWS Cloud Hosted)**
 - Using Open Source WMO Software
 - Deploy, Train and Transfer to NMHS
 - Ongoing annual Maintenance and Operation
 - Includes Viewer/Dashboard/Notifications
 - Dedicated Customer Support with 24 hour response time
- **WIS 2.0 Node as a Service (AWS Cloud)**
 - Synoptic Managed Solution
 - Design, Build, Operate and Maintain with 99.99% uptime
 - Includes Viewer/Dashboard/Notifications
- **Consulting, Support & Maintenance Service - 3rd Party supplied**
 - a. Includes Viewer/Dashboard/Notifications



Note: All options include Dedicated Customer Support with 24 hour response time

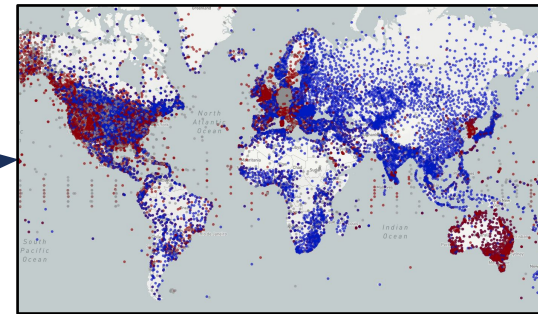
Synoptic WIS 2.0 Workflow



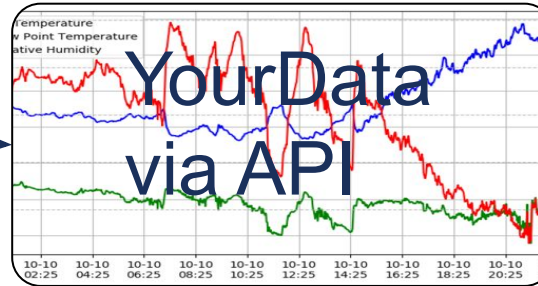
Synoptic WIS2 Offering



Monitoring N/W



Access to Nearby Country Networks



Custom Apps

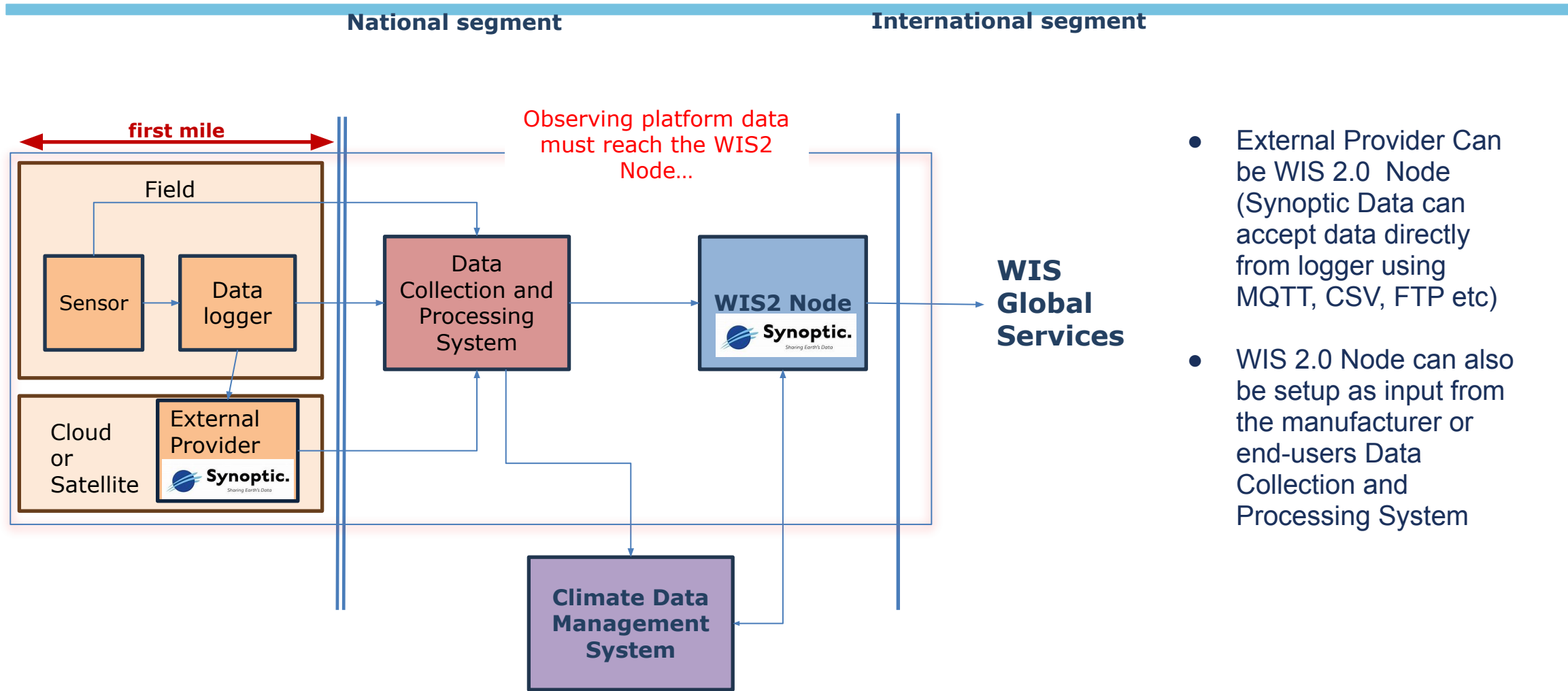


Climate Data Management System



Dashboards & Notifications
Viewer.Synopticdata.com

Tools for Monitoring Health and O&M of the stations



- External Provider Can be WIS 2.0 Node (Synoptic Data can accept data directly from logger using MQTT, CSV, FTP etc)
- WIS 2.0 Node can also be setup as input from the manufacturer or end-users Data Collection and Processing System

Customer Support & Success

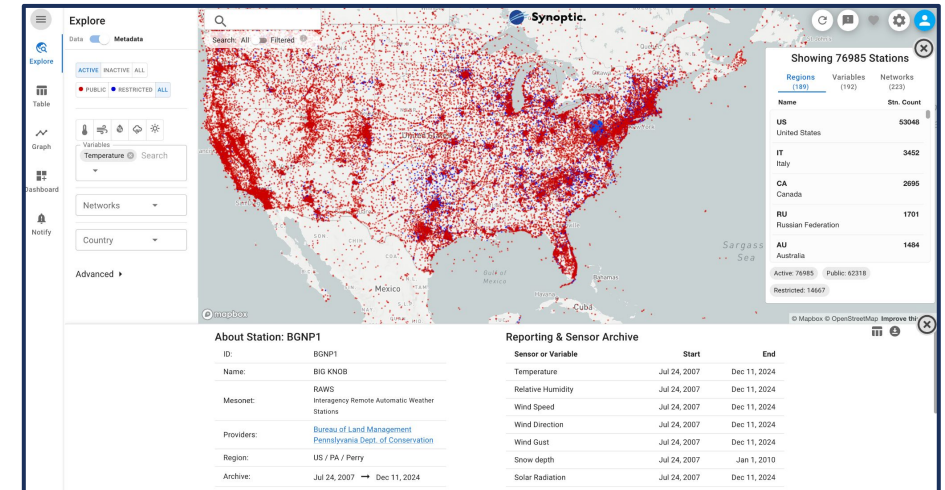
- Synoptic uses ZOHO Desk,
 - receive, and log customer emails for support
 - assign and track all tickets in one place
- With over 4,000 total users of our products, Synoptic still resolves
 - 76.4% of tickets within 4 hours
 - 83.1% of tickets within 8 hours
- Synoptic will provide a dedicated email [**support@synopticdata.com**](mailto:support@synopticdata.com) and a dedicated customer service representative will provide the first response for a support request within **one business** day.



OSCAR Metadata Support



- Expert Metadata Management:
 - Synoptic can help streamline the creation, validation, and submission of high-quality metadata compliant with WMO's OSCAR metadata standards.
- Seamless Integration with WIS2:
 - We ensure metadata aligns perfectly with WIS2 requirements.
- Proven Expertise:
 - Synoptic is trusted by meteorological organizations worldwide to manage and process metadata efficiently and reliably.



OSCAR Observing Systems
Capability Analysis
and Review Tool



Presenter

Ashish Raval

ashish.raval@synopticdata.com



ArcGIS Marketplace
Provider

Follow

 @SynopticData

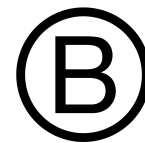
 Synoptic Data PBC

Contact

sales@synopticdata.com



Certified



Corporation

