

Location: 32.04°S 54.73°W

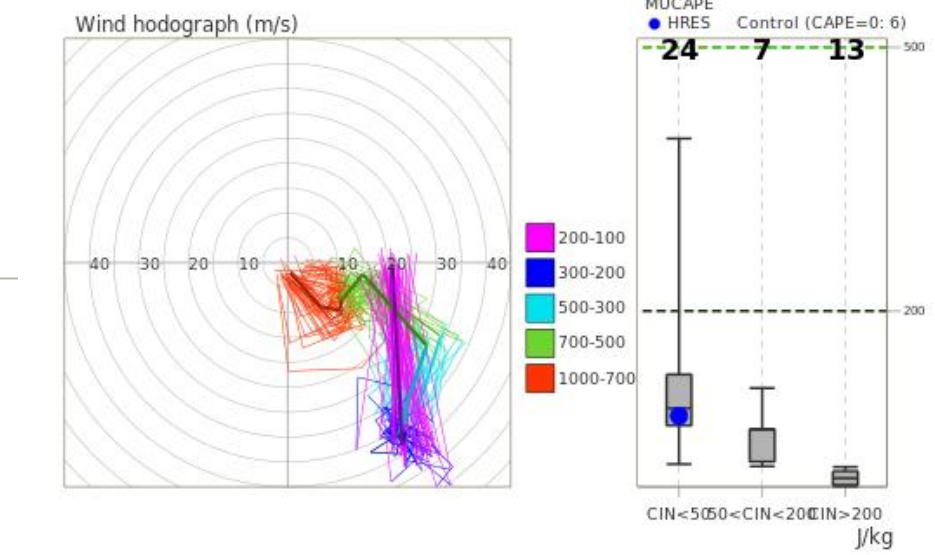
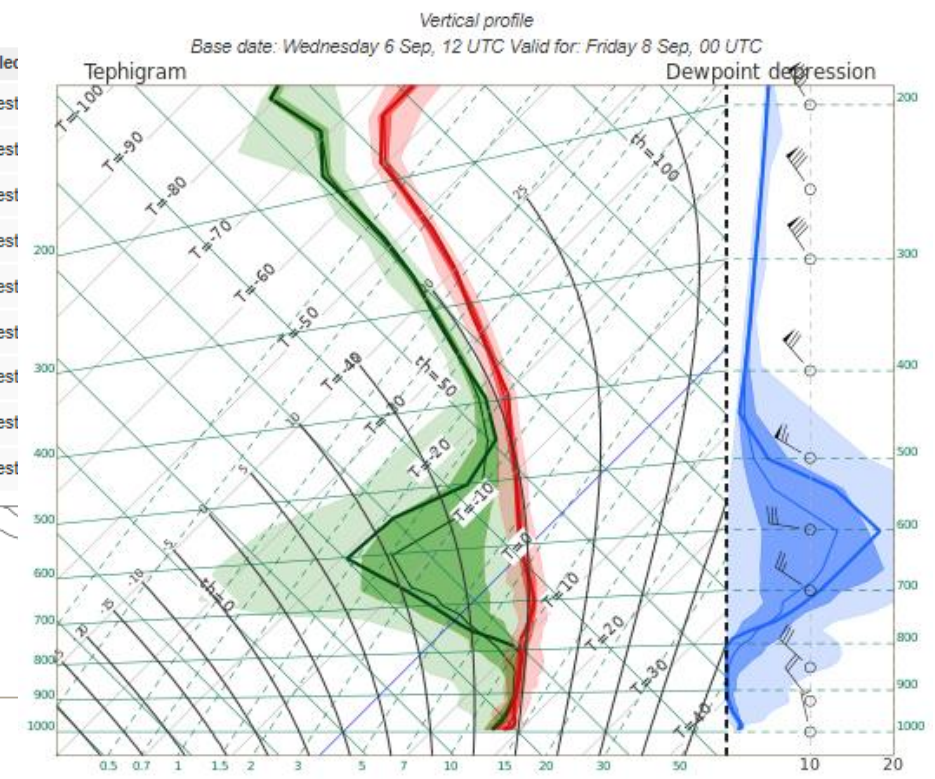
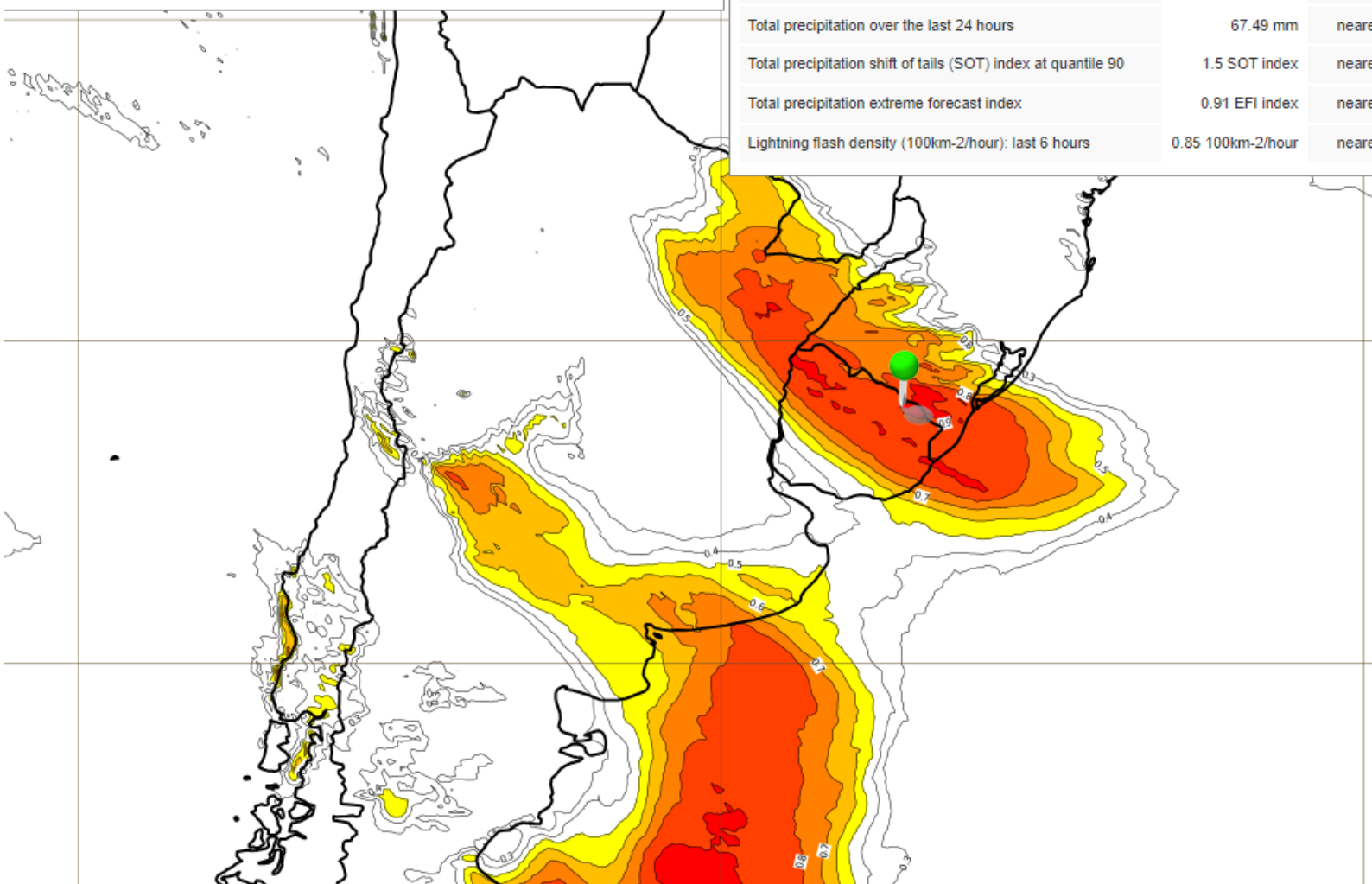
Probe

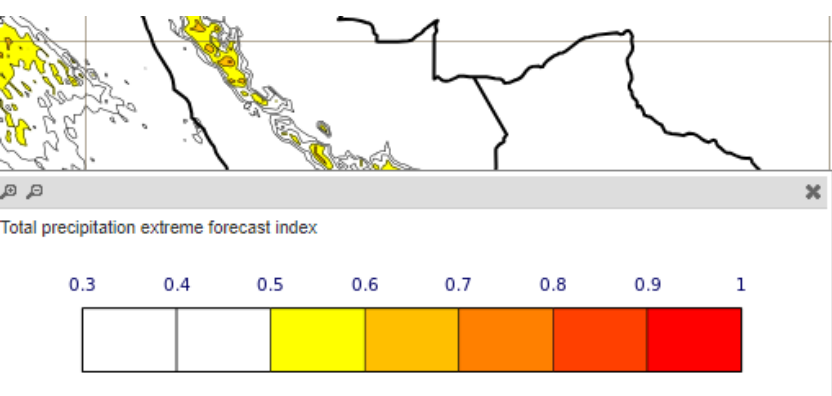
Data values near location 32.12°S 54.38°W, Wednesday 6 Sep, 12 UTC T+36  
Altitude (gtopo30): 121m HRES: 143m ENS: 142m ENS(Extended): 137m

Layer	Value	Point select
Probability of total precipitation $\geq$ 20 mm over last 24 hour (s)	100 %	nearest
24h total precipitation from M-Climate at percentile 99%	53.71 mm	nearest
24h total precipitation from M-Climate at percentile 90%	15.87 mm	nearest
90 % percentile for total precipitation in the last 24 hour	113.03 mm	nearest
100 % percentile for total precipitation in the last 24 hour	136.5 mm	nearest
Total precipitation over the last 24 hours	67.49 mm	nearest
Total precipitation shift of tails (SOT) index at quantile 90	1.5 SOT index	nearest
Total precipitation extreme forecast index	0.91 EFI index	nearest
Lightning flash density (100km-2/hour): last 6 hours	0.85 100km-2/hour	nearest



Total precipitation extreme forecast index

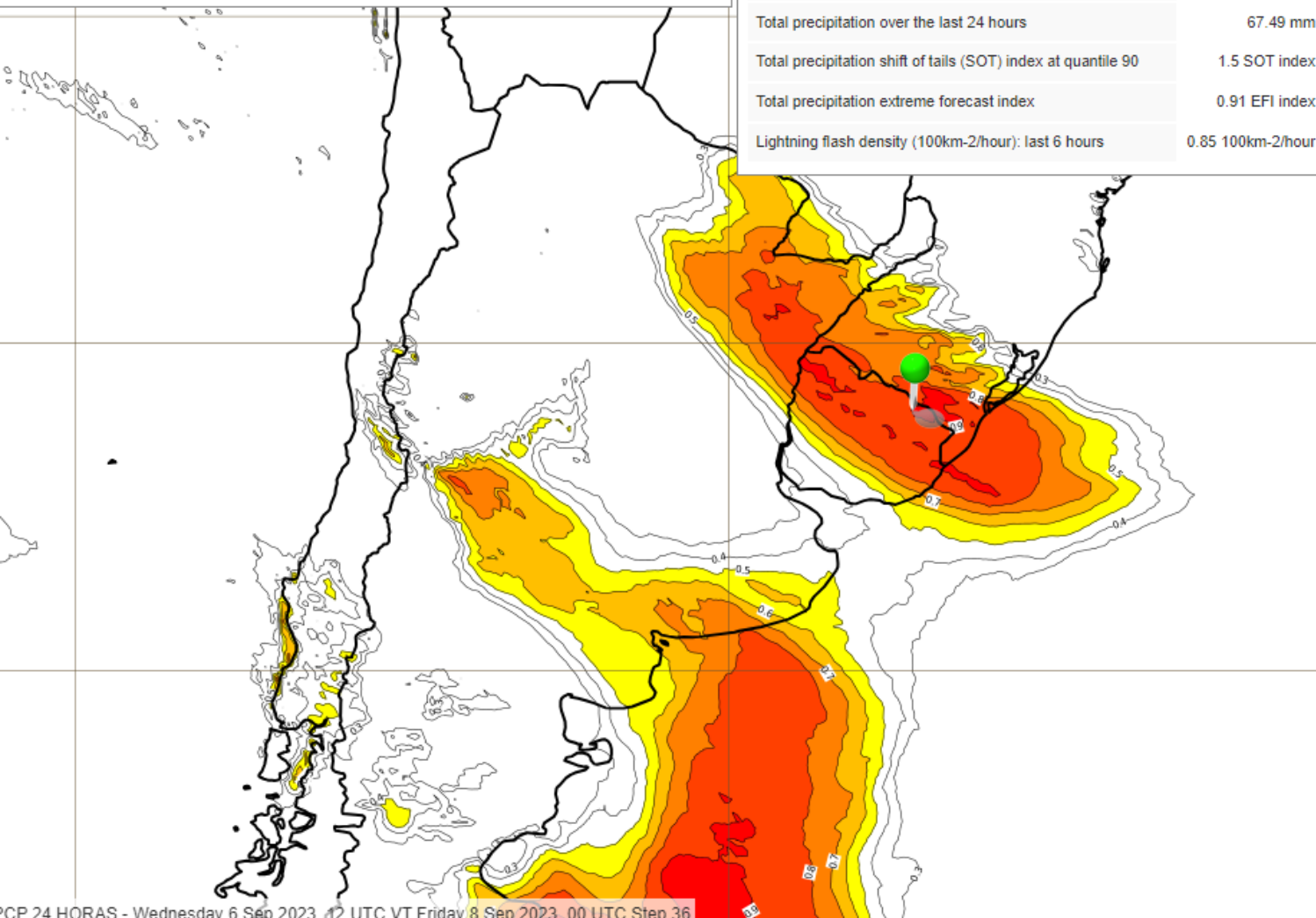




**Probe**

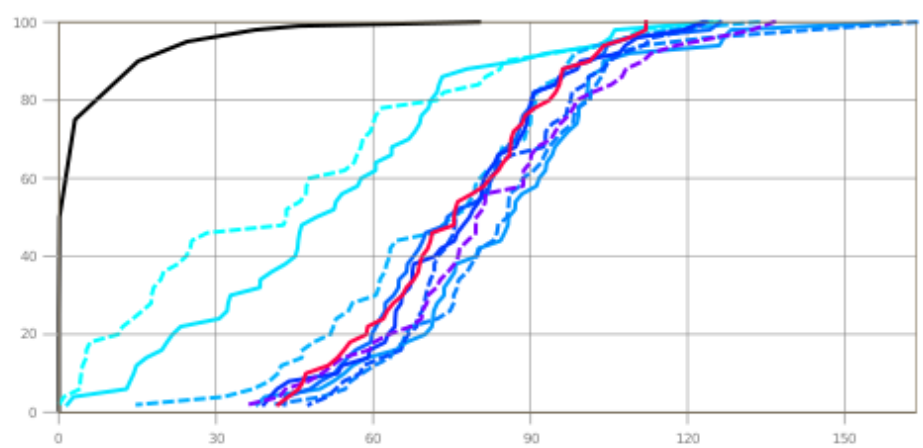
Data values near location 32.12°S 54.38°W, Wednesday 6 Sep, 12 UTC T+36  
 Altitude (gtopo30): 121m HRES: 143m ENS: 142m ENS(Extended): 137m

Layer	Value
Probability of total precipitation $\geq$ 20 mm over last 24 hour (s)	100 %
24h total precipitation from M-Climat at percentile 99%	53.71 mm
24h total precipitation from M-Climat at percentile 90%	15.87 mm
90 % percentile for total precipitation in the last 24 hour	113.03 mm
100 % percentile for total precipitation in the last 24 hour	136.5 mm
Total precipitation over the last 24 hours	67.49 mm
Total precipitation shift of tails (SOT) index at quantile 90	1.5 SOT index
Total precipitation extreme forecast index	0.91 EFI index
Lightning flash density (100km-2/hour): last 6 hours	0.85 100km-2/hour

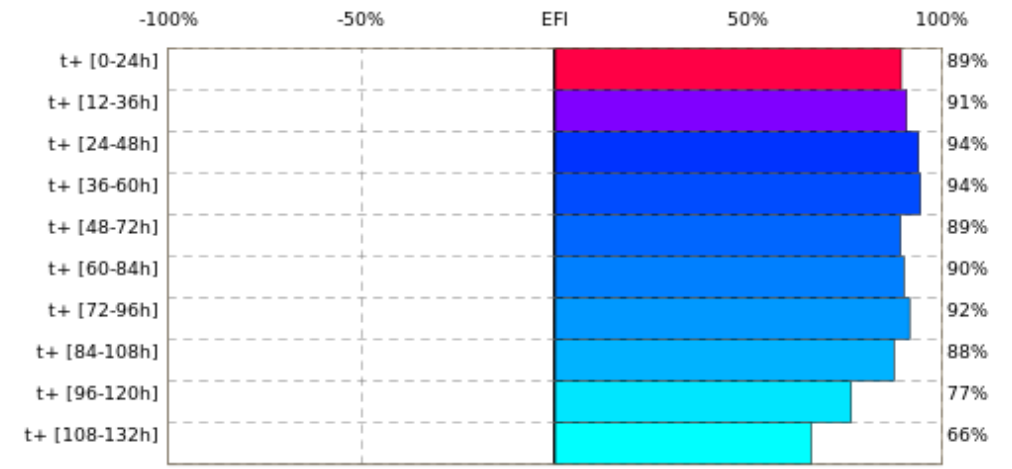


Location: 32.12°S 54.38°W Help + More ... + Load ...

ENS cumulative distribution function (CDF) for 24hr precipitation (mm)  
 Base date: Thursday 7 Sep, 00 UTC  
 Valid for 24 hours from Thursday 7 Sep, 02 UTC to Friday 8 Sep, 00 UTC

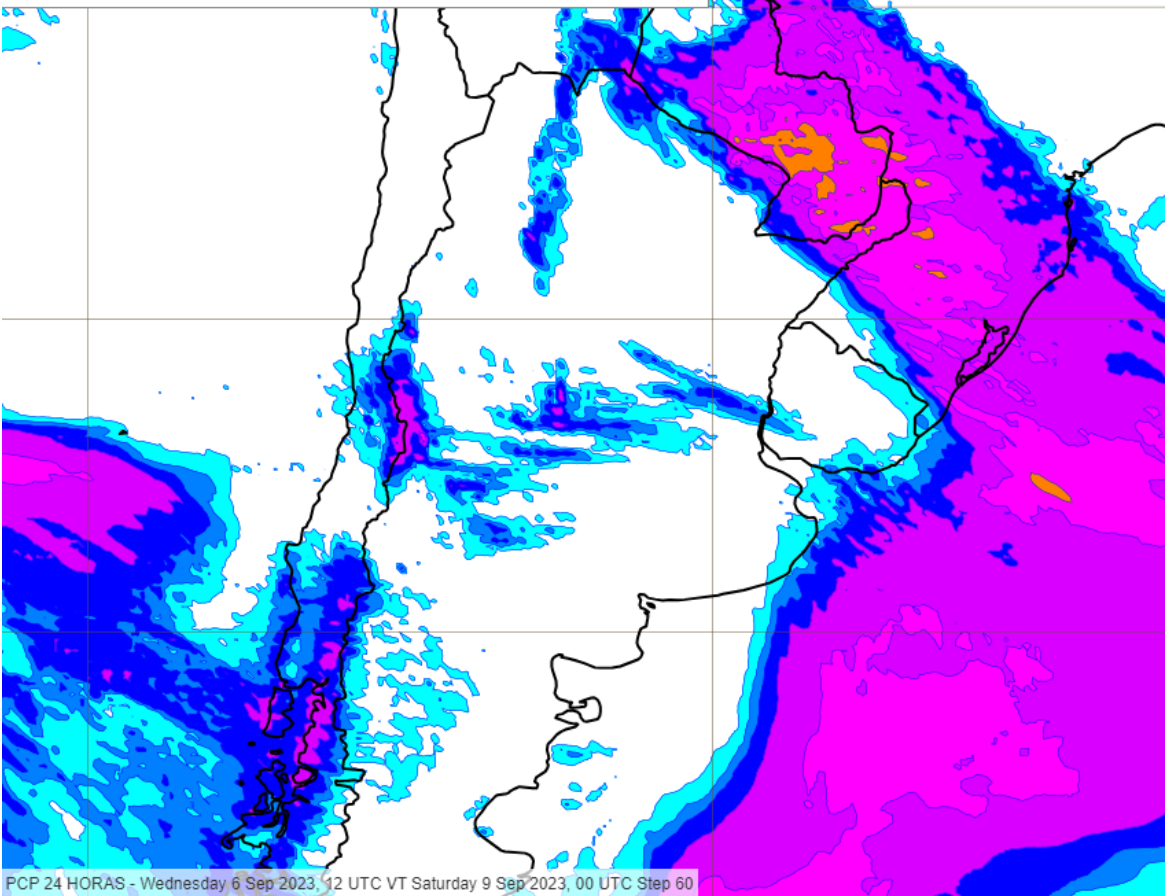


Extreme forecast index (EFI) for 24hr total precipitation (mm)  
 Base date: Thursday 7 Sep, 00 UTC  
 Valid for 24 hours from Thursday 7 Sep, 02 UTC to Friday 8 Sep, 00 UTC



Total precipitation over the last 24 hours (mm)

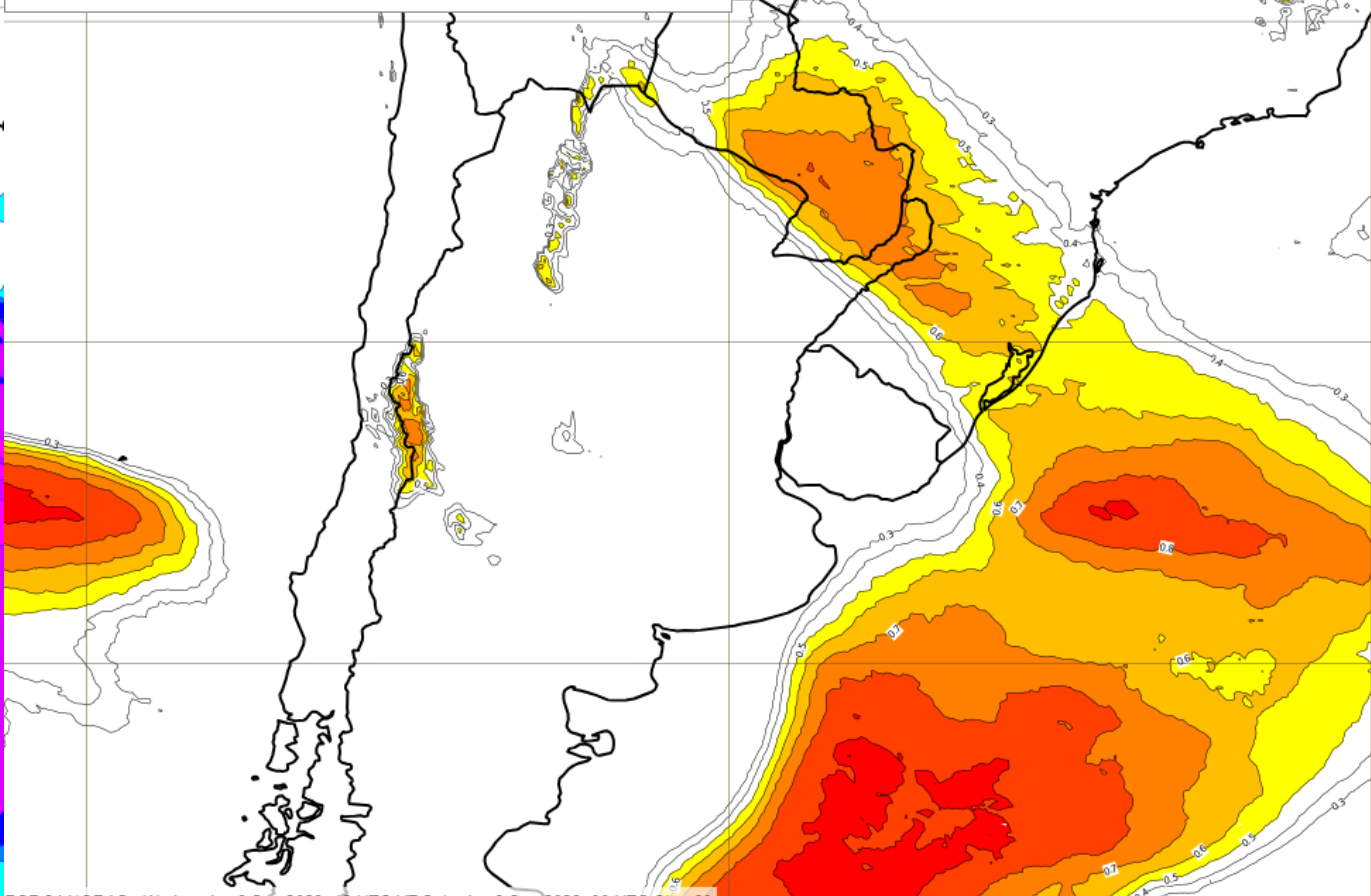
0.5 2 4 10 25 50 100 250



PCP 24 HORAS - Wednesday 6 Sep 2023, 12 UTC VT Saturday 9 Sep 2023, 00 UTC Step 60

Total precipitation extreme forecast index

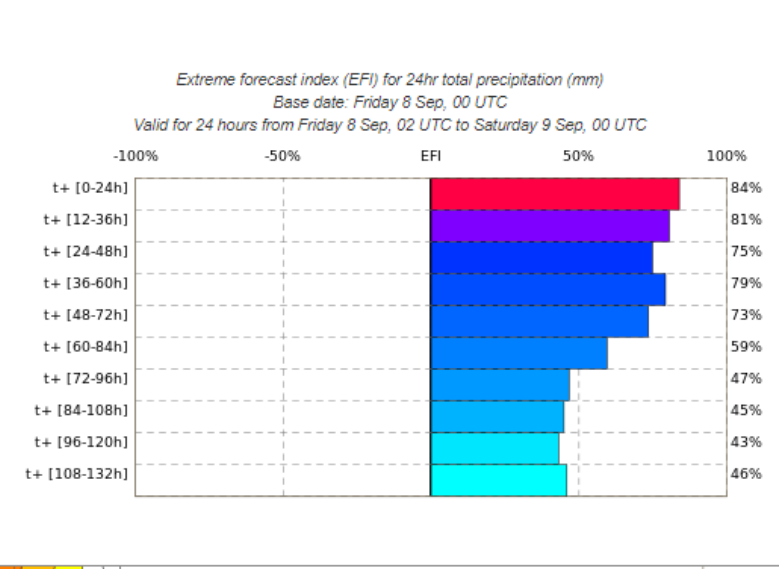
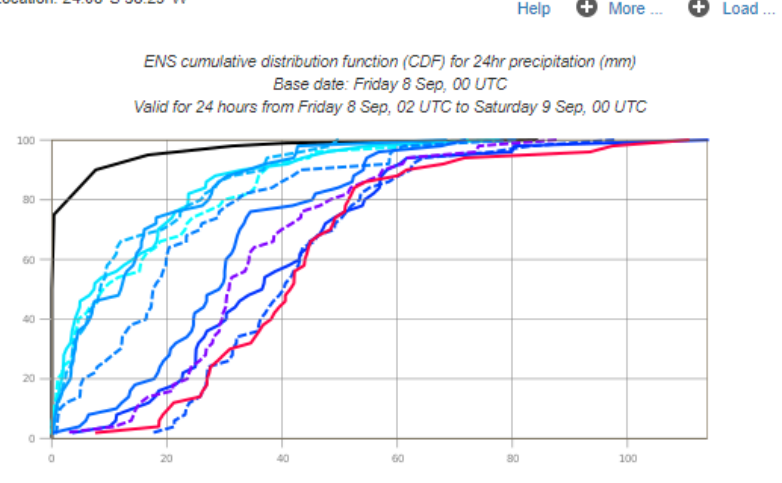
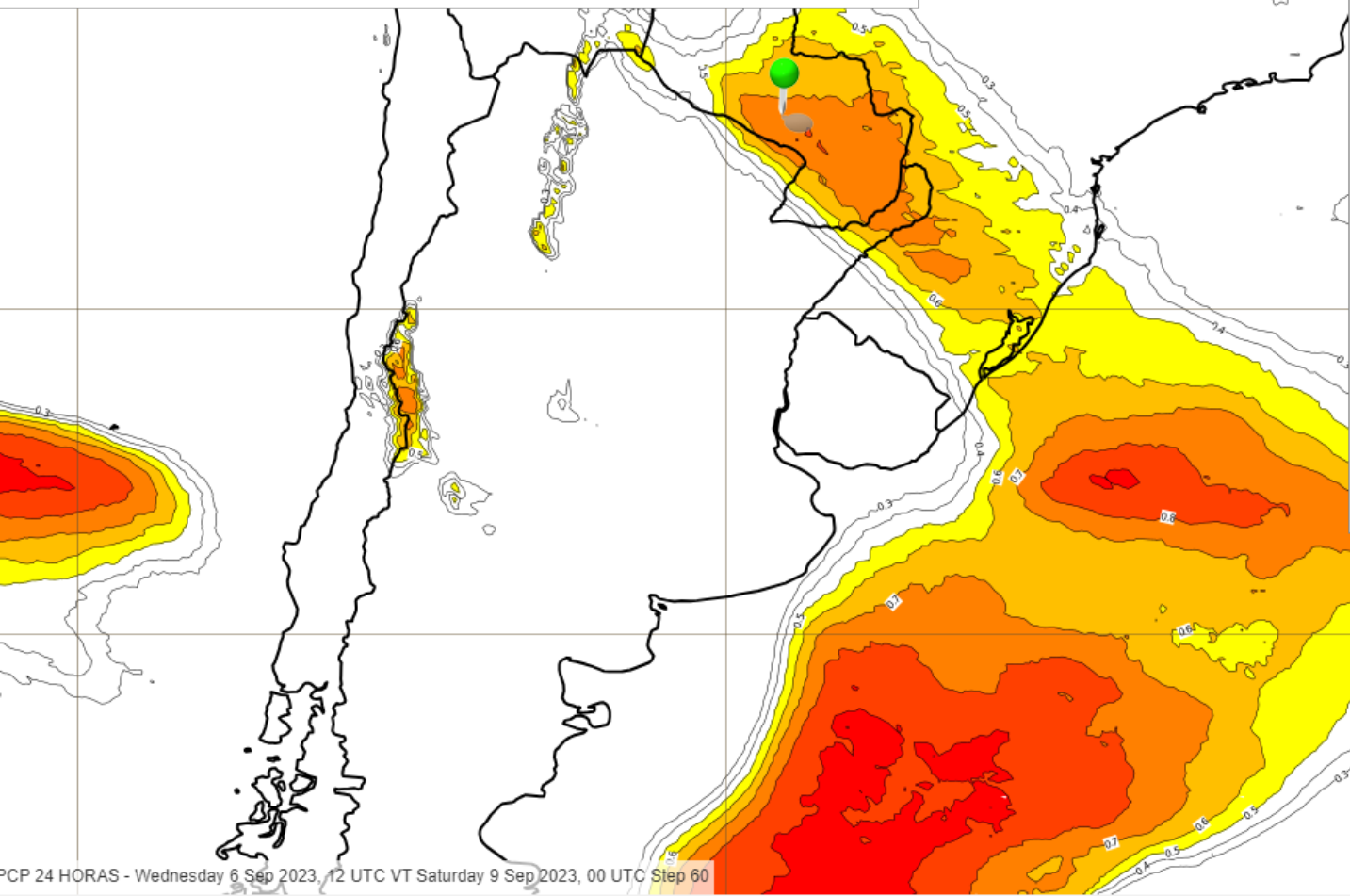
0.3 0.4 0.5 0.6 0.7 0.8 0.9 1



PCP 24 HORAS - Wednesday 6 Sep 2023, 12 UTC VT Saturday 9 Sep 2023, 00 UTC Step 60

Data values near location 24.08°S 58.29°W, Wednesday 6 Sep, 12 UTC T+60  
 Altitude (gtopo30): 88m HRES: 91m ENS: 88m ENS(Extended): 97m

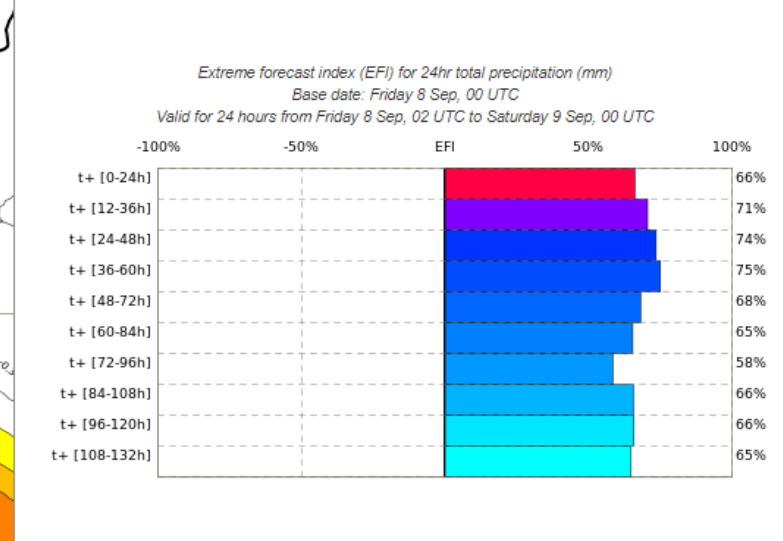
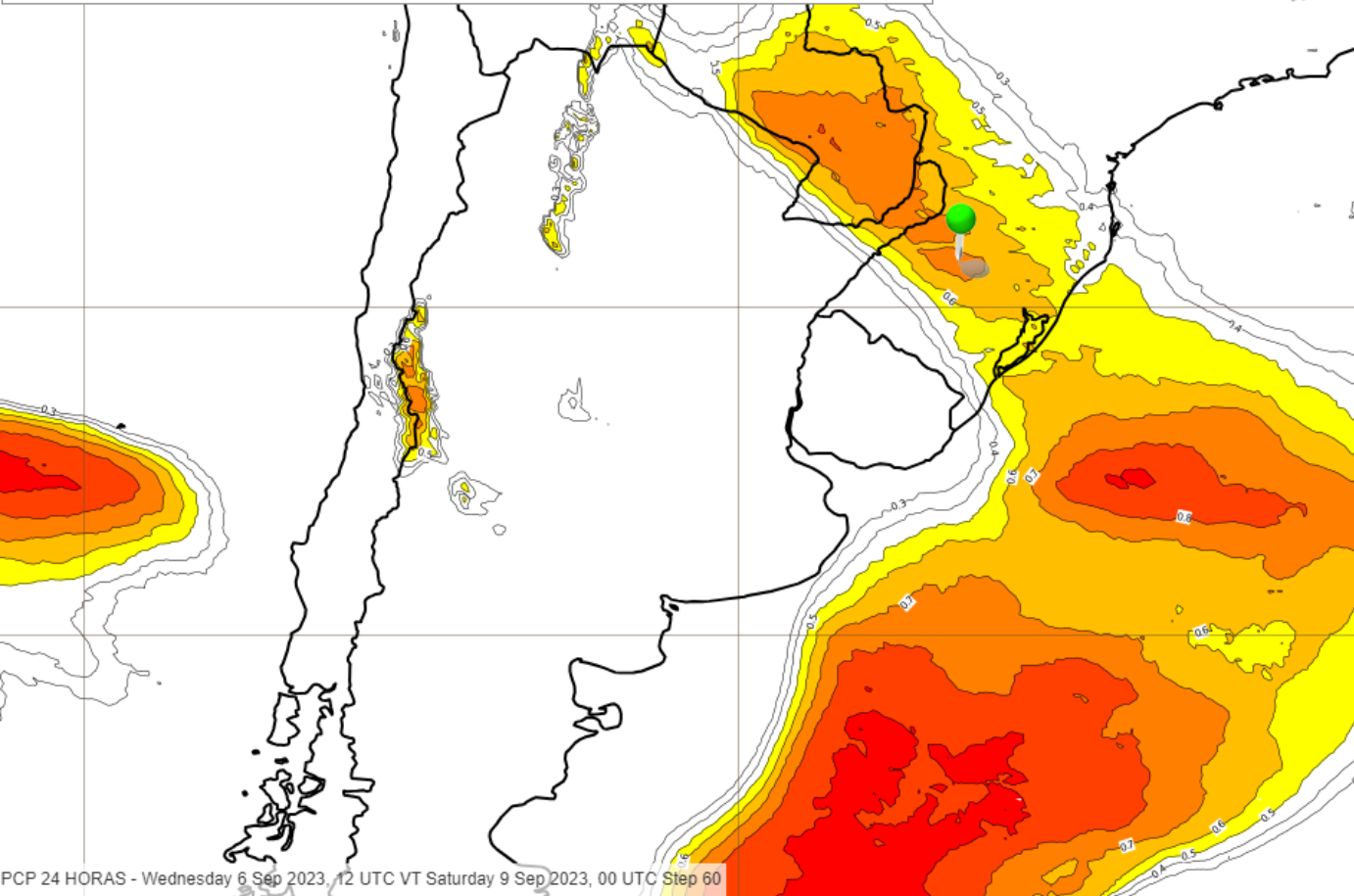
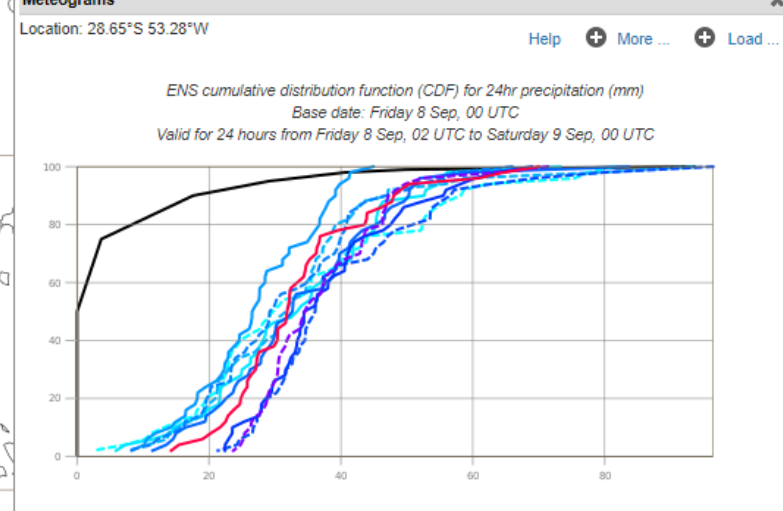
Layer	Value	Point selected	Location	Distance
Probability of total precipitation $\geq$ 20 mm over last 24 hour (s)	98 %	nearest	24.08°S 58.28°W	1.39 km
24h total precipitation from M-Climate at percentile 99%	41.02 mm	nearest	24.08°S 58.28°W	1.39 km
24h total precipitation from M-Climate at percentile 90%	7.63 mm	nearest	24.08°S 58.28°W	1.39 km
90 % percentile for total precipitation in the last 24 hour	62.68 mm	nearest	24.08°S 58.28°W	1.39 km
100 % percentile for total precipitation in the last 24 hour	97.47 mm	nearest	24.08°S 58.28°W	1.39 km
Total precipitation over the last 24 hours	23.83 mm	nearest	24.08°S 58.28°W	1.39 km
Total precipitation shift of tails (SOT) index at quantile 90	0.6 SOT index	nearest	24.08°S 58.28°W	1.39 km
Total precipitation extreme forecast index	0.79 EFI index	nearest	24.08°S 58.28°W	1.39 km
Lightning flash density (100km-2/hour): last 6 hours	0.75 100km-2/hour	nearest	24.08°S 58.28°W	1.39 km



Tools

Data values near location 28.65°S 53.28°W, Wednesday 6 Sep, 12 UTC T+60  
 Altitude (gtopo30): 425m HRES: 407m ENS: 421m ENS(Extended): 384m

Layer	Value	Point selected	Location	Distance
Probability of total precipitation $\geq$ 20 mm over last 24 hour (s)	100 %	nearest	28.65°S 53.26°W	2.31 km
24h total precipitation from M-Climate at percentile 99%	49.93 mm	nearest	28.65°S 53.26°W	2.31 km
24h total precipitation from M-Climate at percentile 90%	17.58 mm	nearest	28.65°S 53.26°W	2.31 km
90 % percentile for total precipitation in the last 24 hour	57.17 mm	nearest	28.65°S 53.26°W	2.31 km
100 % percentile for total precipitation in the last 24 hour	96.41 mm	nearest	28.65°S 53.26°W	2.31 km
Total precipitation over the last 24 hours	35.02 mm	nearest	28.65°S 53.26°W	2.31 km
Total precipitation shift of tails (SOT) index at quantile 90	0.2 SOT index	nearest	28.65°S 53.26°W	2.31 km
Total precipitation extreme forecast index	0.75 EFI index	nearest	28.65°S 53.26°W	2.31 km
Lightning flash density (100km-2/hour): last 6 hours	0.01 100km-2/hour	nearest	28.65°S 53.26°W	2.31 km



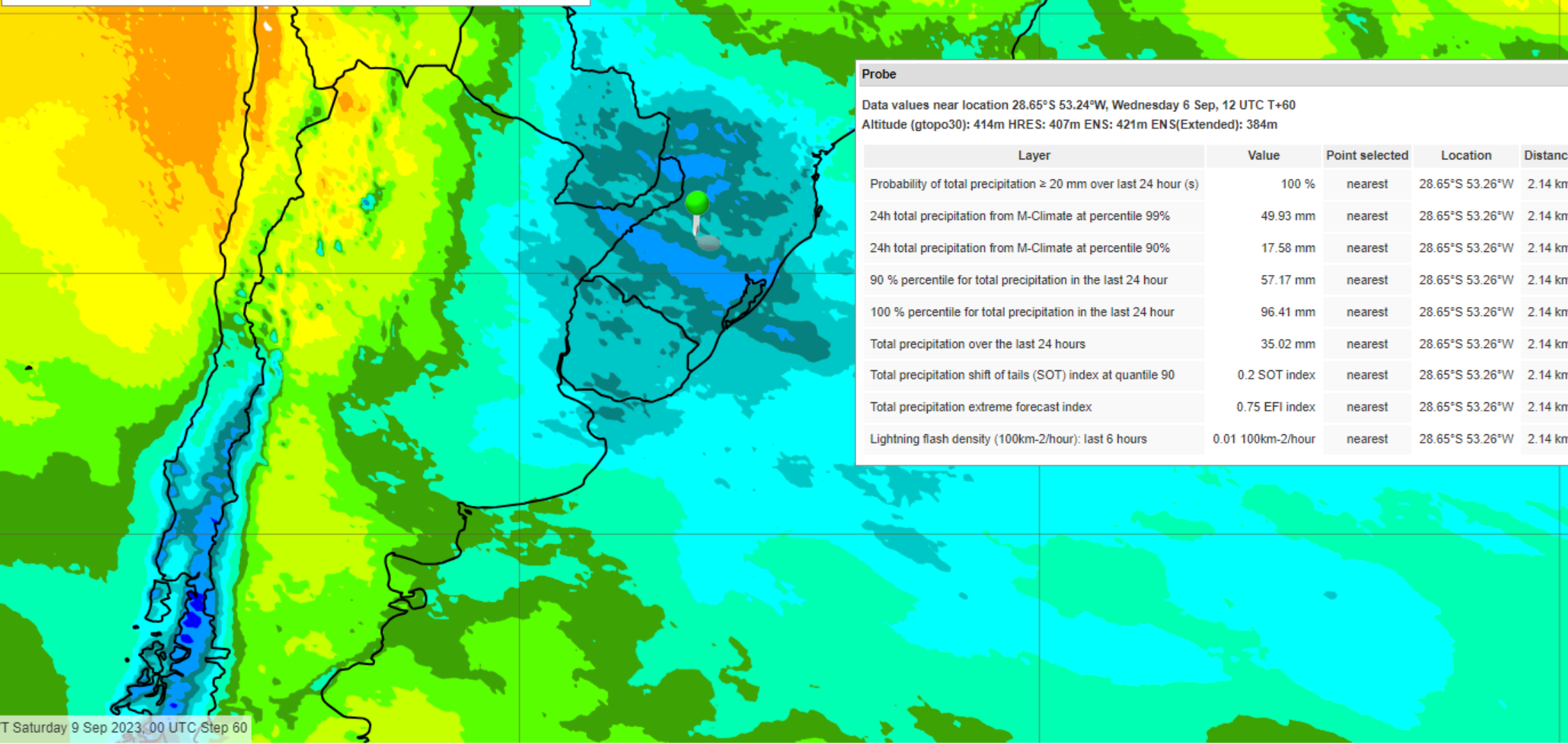
24h total precipitation from M-Climate at percentile 99%

0.1 1 2 5 10 15 20 30 40 50 60 80 100 150 200 250 300 500 700 1000



Total precipitation extreme forecast index

0.3 0.4 0.5 0.6 0.7 0.8 0.9 1



Probe

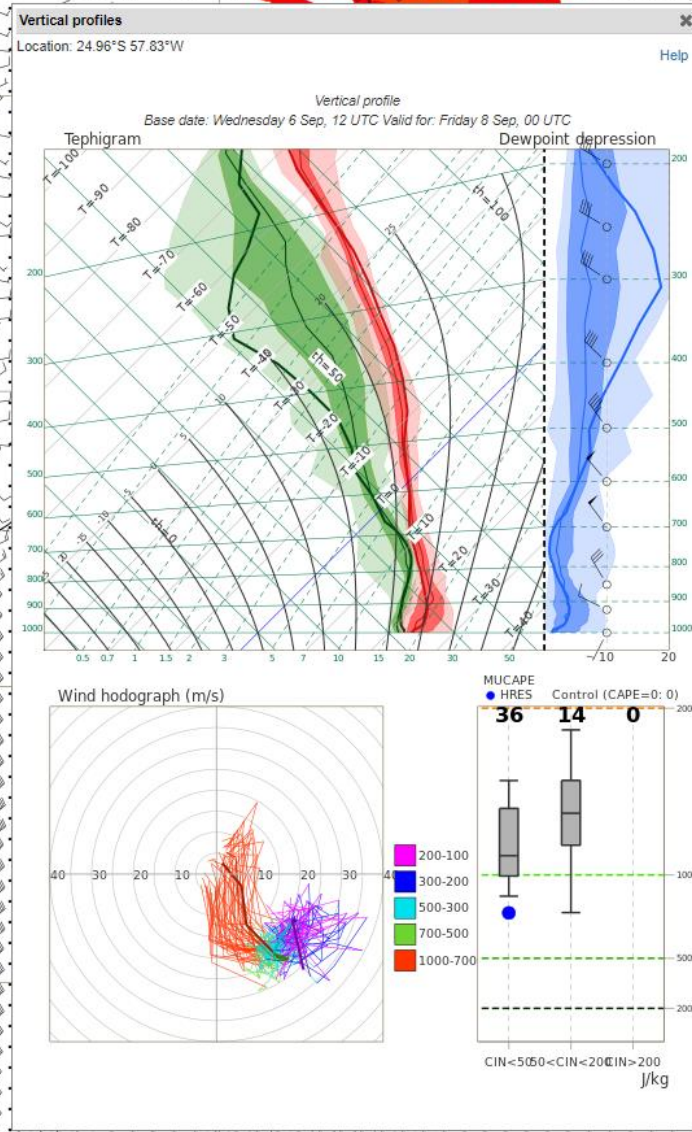
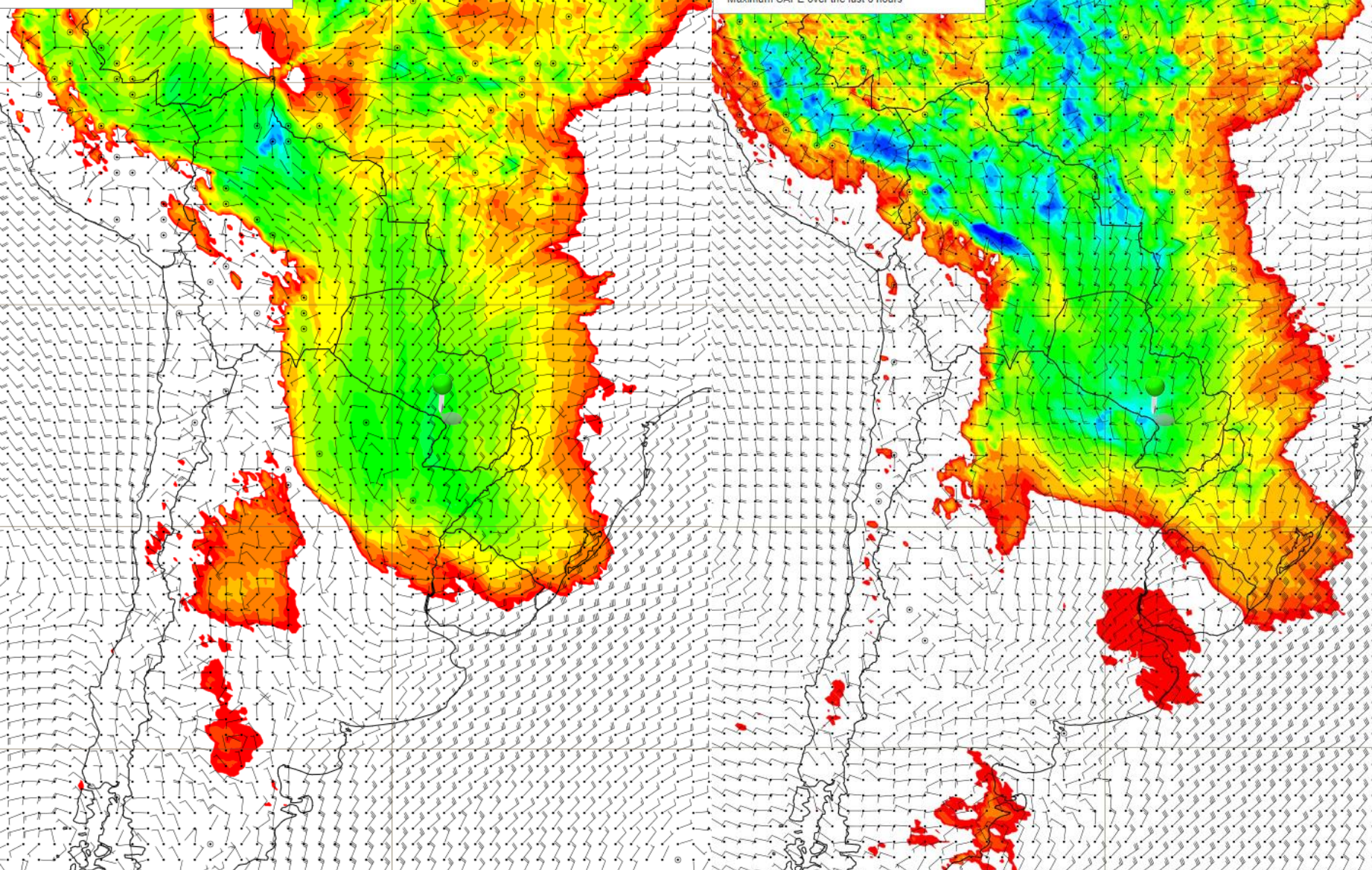
Data values near location 28.65°S 53.24°W, Wednesday 6 Sep, 12 UTC T+60  
Altitude (gtopo30): 414m HRES: 407m ENS: 421m ENS(Extended): 384m

Layer	Value	Point selected	Location	Distance
Probability of total precipitation $\geq$ 20 mm over last 24 hour (s)	100 %	nearest	28.65°S 53.26°W	2.14 km
24h total precipitation from M-Climate at percentile 99%	49.93 mm	nearest	28.65°S 53.26°W	2.14 km
24h total precipitation from M-Climate at percentile 90%	17.58 mm	nearest	28.65°S 53.26°W	2.14 km
90 % percentile for total precipitation in the last 24 hour	57.17 mm	nearest	28.65°S 53.26°W	2.14 km
100 % percentile for total precipitation in the last 24 hour	96.41 mm	nearest	28.65°S 53.26°W	2.14 km
Total precipitation over the last 24 hours	35.02 mm	nearest	28.65°S 53.26°W	2.14 km
Total precipitation shift of tails (SOT) index at quantile 90	0.2 SOT index	nearest	28.65°S 53.26°W	2.14 km
Total precipitation extreme forecast index	0.75 EFI index	nearest	28.65°S 53.26°W	2.14 km
Lightning flash density (100km-2/hour): last 6 hours	0.01 100km-2/hour	nearest	28.65°S 53.26°W	2.14 km



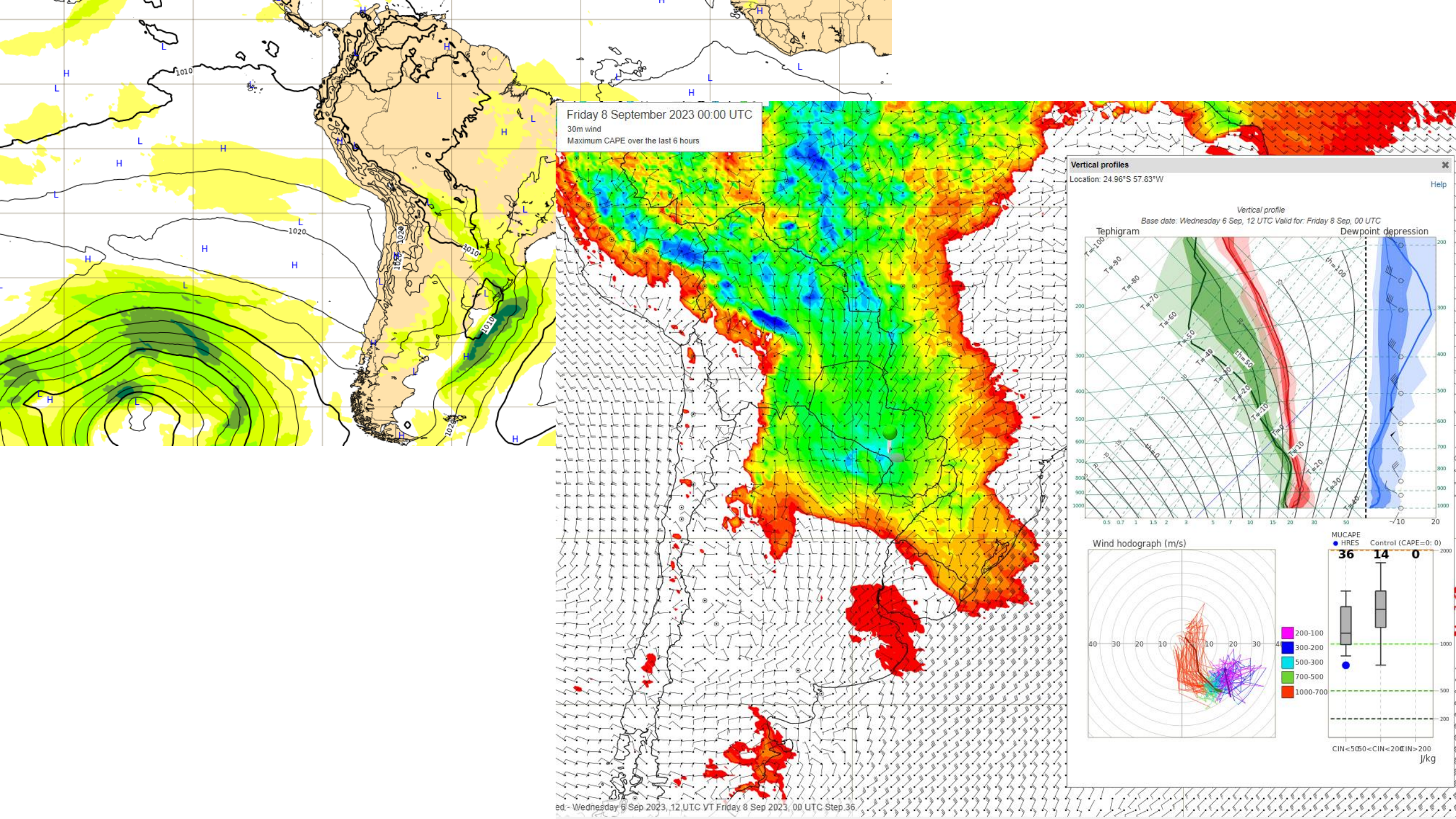
Thursday 7 September 2023 12:00 UTC  
30m wind  
Maximum CAPE over the last 6 hours

Friday 8 September 2023 00:00 UTC  
30m wind  
Maximum CAPE over the last 6 hours



ed - Wednesday 6 Sep 2023, 12 UTC VT Thursday 7 Sep 2023, 12 UTC Step 24

ed - Wednesday 6 Sep 2023, 12 UTC VT Friday 8 Sep 2023, 00 UTC Step 36



Saturday 9 September 2023 00:00 UTC  
30m wind  
Maximum CAPE over the last 6 hours

