

# Meteorología Sinóptica

11 de septiembre 2023

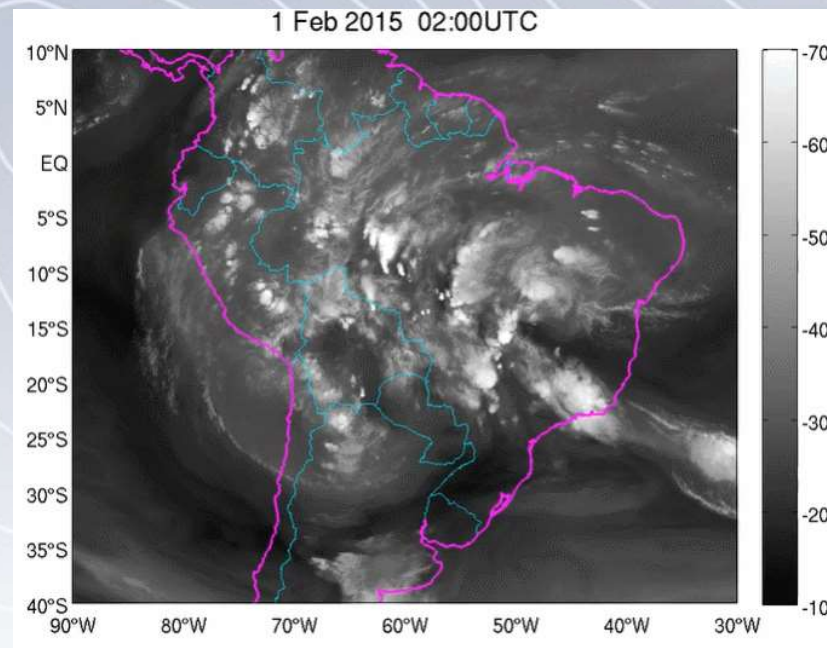
PIB-M 4ª Edición



Javier Martín Martín, Analista Predictor del Grupo de Predicción de Valencia

# PRÁCTICA 1

**Convección en el sudeste del América del Sur: análisis sinóptico de los ingredientes que intervienen en su desarrollo**

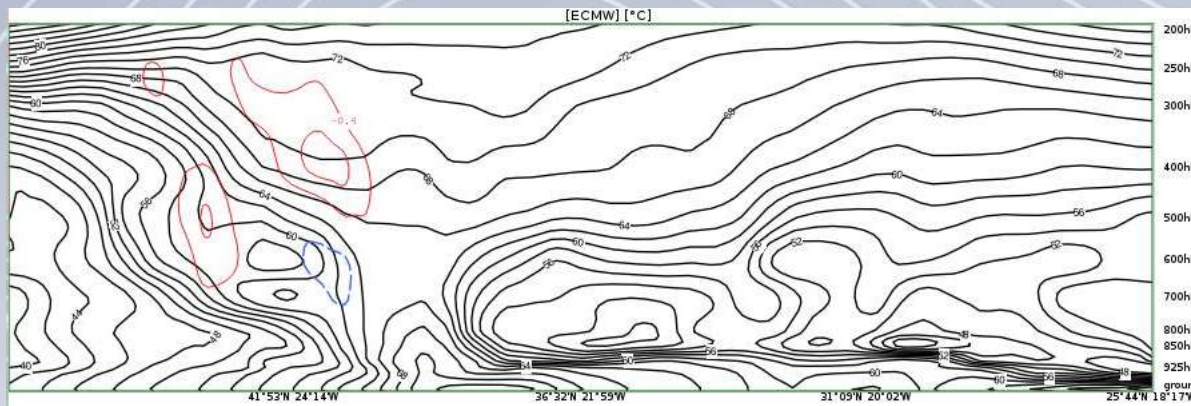


**Link de la práctica:**

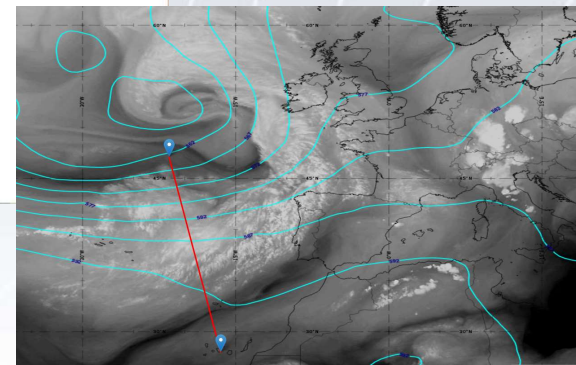
[https://docs.google.com/forms/d/e/1FAIpQLSetyga82IWXNBZob8UDw\\_jrlxGZTCmMVP7tNFwZ9ndIDLOb4A/viewform](https://docs.google.com/forms/d/e/1FAIpQLSetyga82IWXNBZob8UDw_jrlxGZTCmMVP7tNFwZ9ndIDLOb4A/viewform)

# PRÁCTICA 2

## ESTRUCTURA VERTICAL DE LA ATMÓSFERA, SECCIONES VERTICALES 2-D:



Cross-Section from map **Equivalent Potential Temperature** and **Omega**  
for 47°11'N 26°54'W - 25°44'N 18°17'W, valid 17.08.2023 15:00



**Link de la práctica:**

<https://docs.google.com/forms/d/e/1FAIpQLSfdL0Q0lqtVtfmfU2V81TqayrilunU60jdVLyJ7obyVP42E3A/viewform>

# PRÁCTICA 3



## Accedemos a la web de EUMETRAN:

<https://www.eumetrain.org> -> ePort -> ePort JavaScript

The screenshot shows the EUMeTrain website interface. At the top, there is a navigation bar with the EUMeTrain logo and several menu items: All Resources, ePort, User Manual, Past Events, SatCams\*, MTG\*, and About Us. A search bar is located on the right side of the navigation bar. Below the navigation bar, the main content area is divided into two columns. The left column features the 'EPORT' logo and a blue button labeled 'EPORT'. A dropdown menu is open under the 'ePort' navigation item, with 'ePort JavaScript' circled in red. The right column contains the 'Concept of ePort' section, which includes a paragraph describing the technical basis of ePort and a section for 'Technical information'.

**EUMeTrain** All Resources ▾ ePort ▾ User Manual Past Events SatCams\* MTG\* About Us Search

**EPORT**

**EPORT**

ePort JavaScript

ePort Pro

About ePort

### Concept of ePort

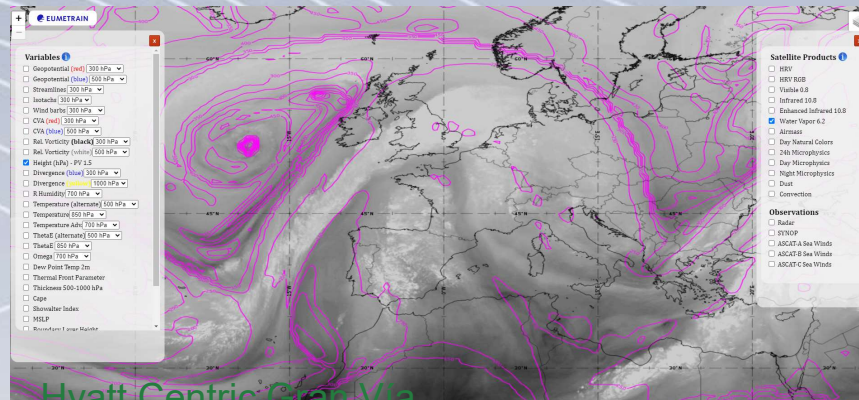
ePort uses the technical basis of Visual Weather © developed by IBL. It allows you to combine a range of EUMETSAT provided satellite data with satellite derived products and numerical model fields.

All images generated are stored in an archive which makes it possible for you to do a qualitative research.

**Technical information**

# PRÁCTICA 3

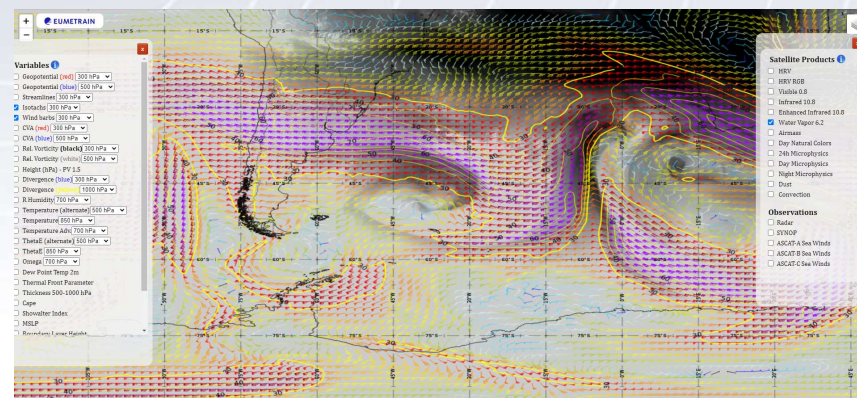
## CASO 1: BAJA BAROCLINA AL OESTE DE EUROPA (08-05-2021)



LINK DE LA PRÁCTICA CASO 1:

[https://docs.google.com/forms/d/e/1FAIpQLSc4nmD1X34ebw2zaeEGO1Mg-sKVEGFvyETtURjOKm\\_Jwnkulg/viewform](https://docs.google.com/forms/d/e/1FAIpQLSc4nmD1X34ebw2zaeEGO1Mg-sKVEGFvyETtURjOKm_Jwnkulg/viewform)

## CASO 2: BAJA BAROCLINA AL SURESTE DE AMÉRICA DEL SUR (03-07-2022)



LINK DE LA PRÁCTICA CASO 1:

<https://docs.google.com/forms/d/e/1FAIpQLSdgZp-LJOHHZSYAJOm6NpLvWzJdfuOjZJyaIMablcTSSMZwA/viewform>

# PRÁCTICA 4



## CASO 3: BAJA BOLIVIANA

Localizar un caso en el que esté establecida la Baja Boliviana en 200 hPa durante el verano austral.

- Altura geopotencial y viento en 200 hPa
- Líneas de corriente y divergencia en 200 hPa
- Advección de vorticidad y geopotencial en 500 hPa
- Convergencia de humedad y vector viento en 850 hPa
- Omega y vector del viento en 925 hPa

Comparar el caso seleccionado con el que se muestra en la siguiente web:

[https://resources.eumetrain.org/satmanu/CM4SH/BoHi\\_esp/navmenu.php?page=3.0.0](https://resources.eumetrain.org/satmanu/CM4SH/BoHi_esp/navmenu.php?page=3.0.0)