



Government of Nepal
Ministry of Energy Water Resources and Irrigation
Department of Hydrology and Meteorology



Hydro-Meteorological Services and Challenges in Nepal

Ram Gopal Kharbuja

Joint Secretary

Permanent Representative of Nepal With WMO

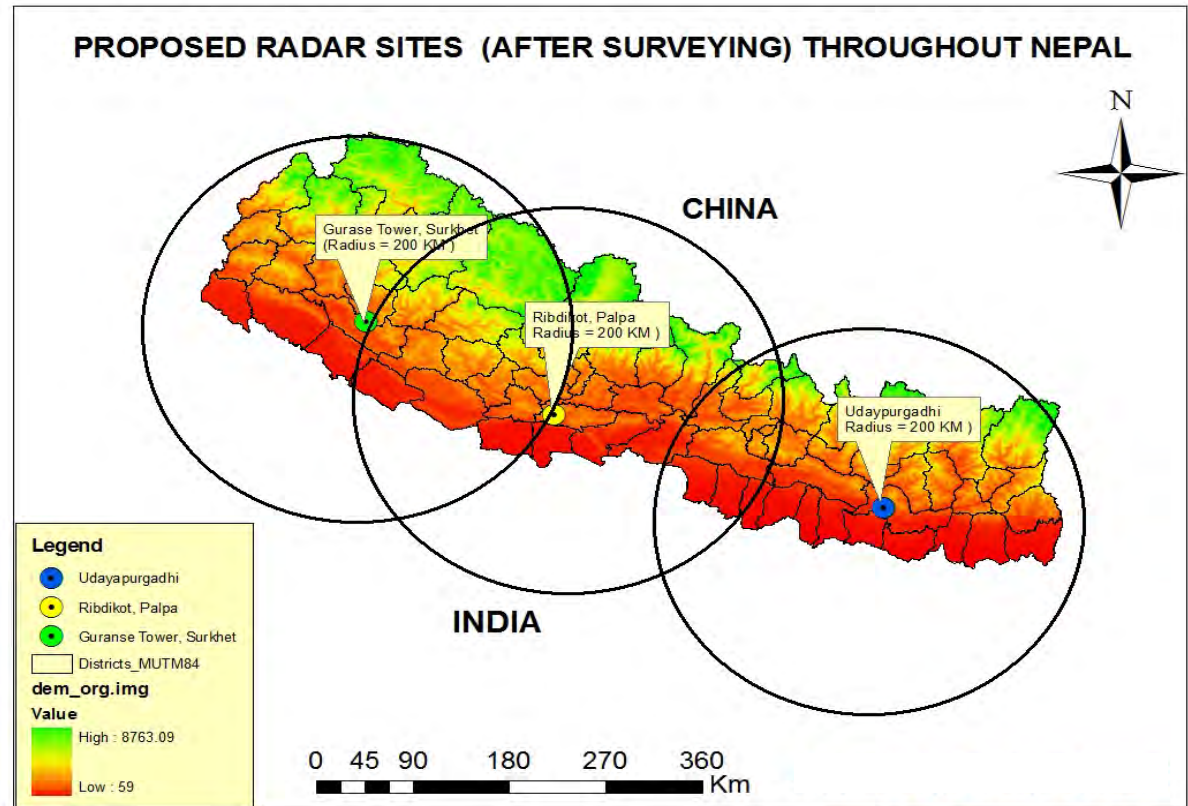
WMO Familiarization Visit Program

25-September-1 October 2019

Department of Hydrology and Meteorology

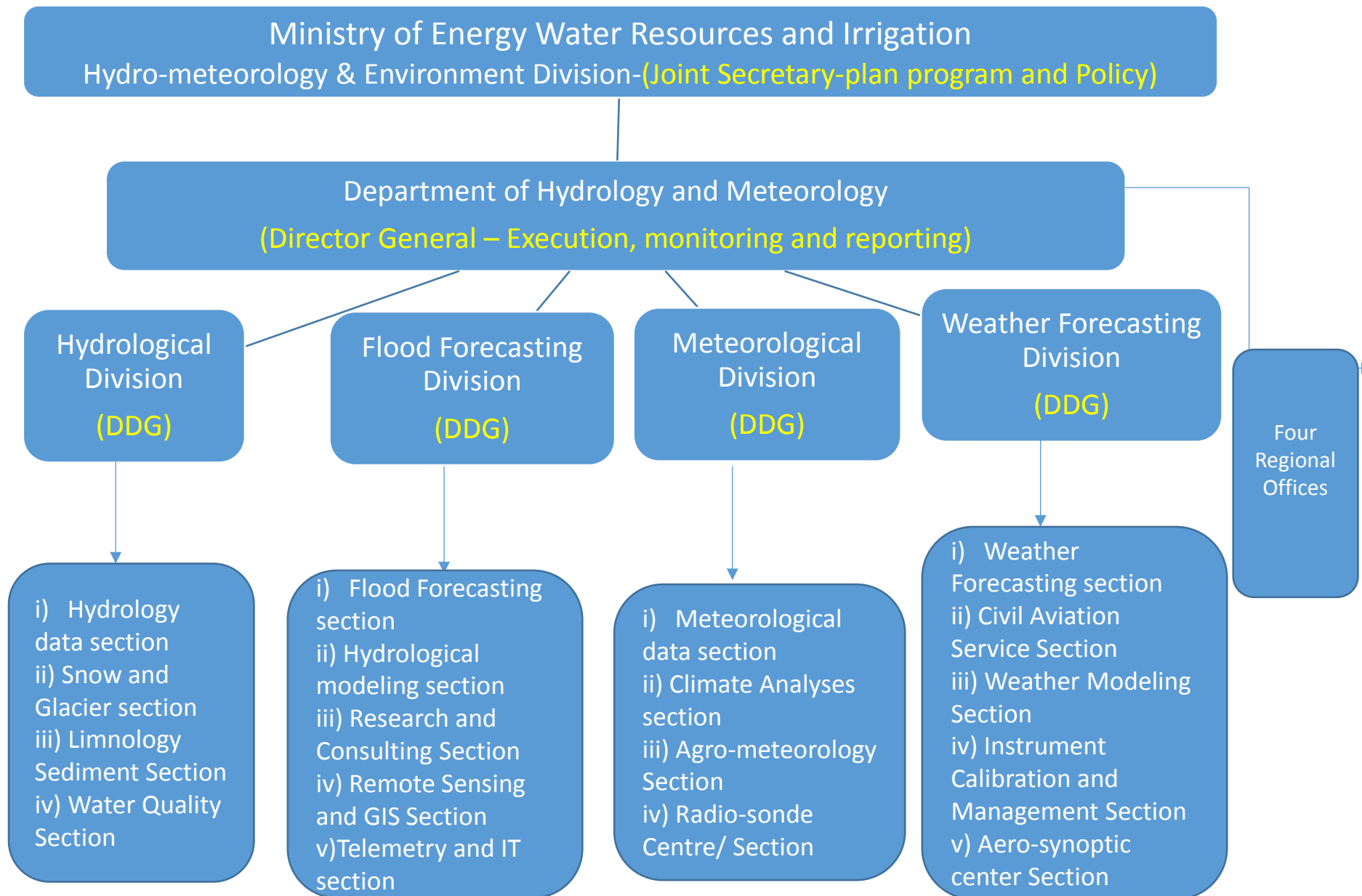
(DHM is NMHS in Nepal)

- Mandate
 - Collect, process and publish hydro-met information all over Nepal
 - Issue forecasts and early warnings to minimize losses from disaster induced by hydro-meteorological extreme events
- Vision
 - Provide reliable hydro-met information
- Legal basis
 - Ministerial cabinet decision
 - Specific laws for hydro-met
- Strategic plan
 - Upgrade hydro-meteorological infrastructure
 - Implementation of multi-agency approach
 - Develop calibration lab facility
 - Install three (3) Doppler VADW
 - Provide reliable weather information
 - Implement cost recovery sectors with appropriate



Organization Structures for Hydro-meteorological Services in Nepal

(DHM is NMHS in Nepal)



Resources for Hydro-meteorological Services in DHM Nepal

Human Resources				
S.N.	Description	Numbers	Percentage	Remarks
1	Senior Management (Technical)	6	2.75	Full time staff
2	Senior Experts	26	11.93	
3	Experts	48	22.08	
4	Technicians	138	63.3	
	Total	218		
5	Supporting Staff	37		
6	Observers and guards	700		

Infrastructures

- Well facilitated newly constructed modern building for DHM
- Installed network comprising nine Lightening Detection stations covering all Nepal
- One Doppler Weather Radar has been installed in Surkhet western part of Nepal
- More than 100 automatic rain gauge, 16 automatic weather stations and 92 hydrometric stations with Telemetry System have been installed
- High power computing machines procured
- TV weather stations going to be installed by 2019





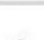
METEOROLOGICAL STATIONS : NEPAL



Altitudinal Distribution of Meteorological stations					
Altitude Range (m)	Climate	Precipitations	Agro-meteorology	Aero-Synoptic	Synoptic
60 - 500	32	66	5	5	1
500 - 1000	17	33	1	1	3
1000 - 2000	36	107	5	1	4
2000 - 3000	14	23	2		1
3000 - 4300	4	13			
Unknown		64			
Total	103	306	13	7	9

Total Station : 438 nos

Legend

-  Synoptic
-  Aero Synoptic
-  Agro Meteorology
-  Climate
-  Precipitation 1
-  Precipitation 2

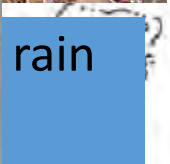
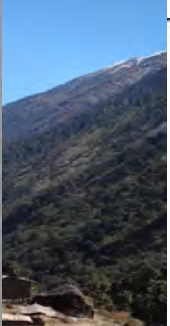


Government of Nepal
DHM

0 30 60 120 180 240 Kilometers

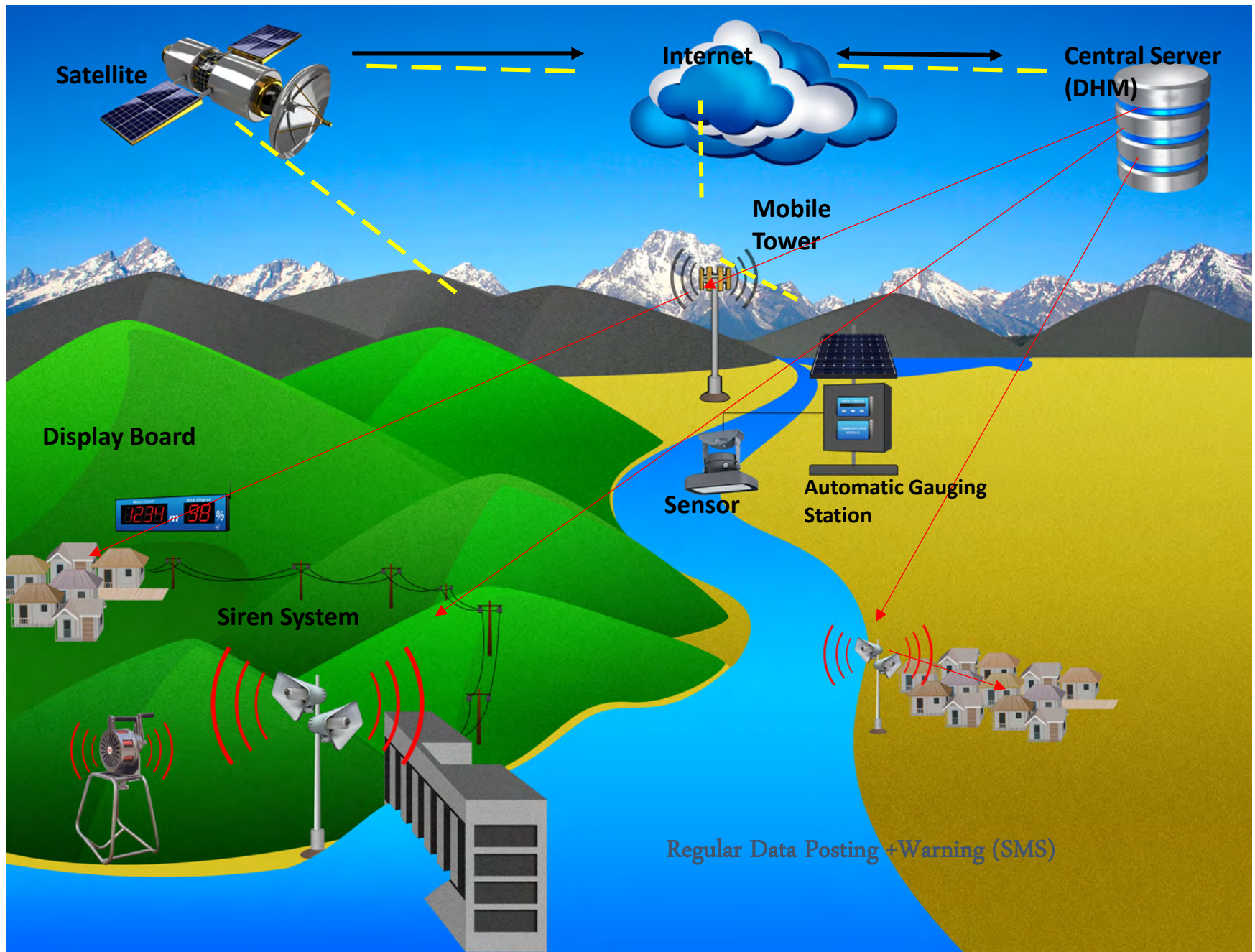
Hydrometric Stations under Hydrology Division

N



W
ga

Modern Communication for Hydro-met Data Transmission and Acquisition



Service products: Public weather, aviation, climate

Observations

2019-09-22 17:45 NPT



Government of Nepal
Department of Hydrology and Meteorology
Met

Home Weather NWP Satellite Mountaineering

Weekly Agro-met Bulletin for farmers in 25 Districts



वर्ष ५ अंक २३



कृषि-मौसम सल्लाह सेवा बुलेटिन

जारी मिति: २ असोज २०७६

अवधि: २ असोज २०७६— ९ असोज २०७६

जिल्लाहरू: झापा, मोरङ, संखुवासभा, धनकुटा, सुनसरी, उदयपुर, सप्तरी, सिराहा, दोलखा, महोत्तरी, काभ्रेपलाञ्चोक, बारा, धादिङ, चितवन, कास्की, मुस्ताङ, पाल्पा, रुपन्देही, अर्घाखाँची, कपिलवस्तु, पश्चिम रुकुम, दाङ, बाँके, सुर्खेत, जुम्ला, कैलाली, डोटी, दार्चुला

जारी गर्ने:

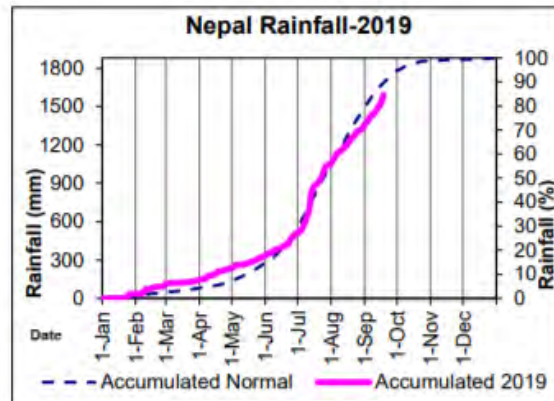
कृषि तथा पशुपन्छी विकास मन्त्रालय- जलवायु प्रकोप समूहान निर्माण आयोजना (कृषि व्यवस्थापन सूचना प्रणाली)

नेपाल कृषि अनुसन्धान परिषद् -कृषि वातावरण अनुसन्धान महाशाखा

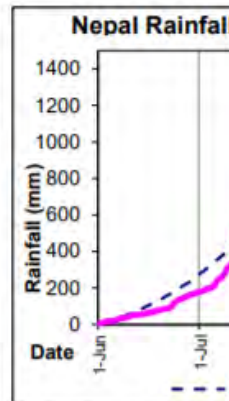
जल तथा मौसम विज्ञान विभाग - मौसम पूर्वानुमान महाशाखा/ कृषि-मौसम शाखा

सारांश:

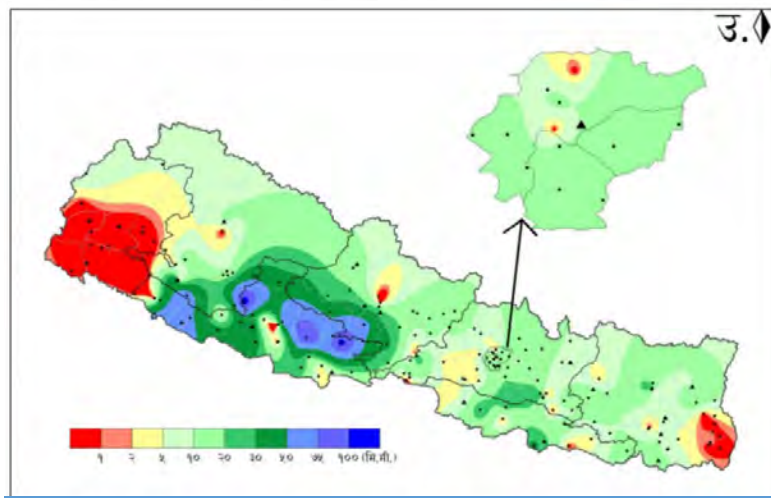
- साताभरि नै आंशिक देखि सामान्य बदली रही केहि स्थानहरूमा हल्का देखि मध्यम वर्षाको सम्भावना छ। साताको शुरुमा पूर्वी तराई तथा पहाडी जिल्लाहरू र मध्य र पश्चिम पहाडी जिल्लाहरूका एकदुई स्थानहरूमा भारी वर्षा हुने संभावना छ। साताको अन्त्यतिर पश्चिमी तराईका भूभागहरूमा हावाहुरीको सम्भावना रहेको छ।
- धानवालीमा लाग्ने डडुवा रोग लागेमा पानी जम्न नदिने, बोटलाई सकभर घाउचोट लाग्नबाट बचाउने, धानको दुप्ता भैच्ने र एप्रीमाइसिन-१००: २-३ ग्राम प्रति लिटर पानीको दरले ८-१० दिनको फरकमा २-३ पटकसम्म मिलाई छर्कनुहोस्।
- मकैवालीमा अमेरिकी फोजी कीराको नियन्त्रण अनुगमन गरि विशेष सावधानी अपनाउनुहोस्।
- सुन्तालाजात फलफूलको बोटमा बर्पाकर रोगको व्यवस्थापनको लागि कपर अक्सिक्लोराइड ३ ग्राम र कासु बी (कासुगामाइसिन) १ ग्राम १ लिटर पानीमा मिलाई १५ दिनको फरकमा छर्नुहोस्।
- काउली र बन्दा जस्ता तरकारीवालीका मुख्य मौसमका जातहरूको नर्सरी राख्नुहोस्।
- तराईमा कोल्डस्टोरमा राखिएको बीउ आलु क्षिकी ओभानो ठाउँमा फिजाएर टुसाउन दिनुहोस्।
- खुमल चौडापात, खुमल रातोपात, मार्फा चौडापात जस्ता रायोका जातहरूको तयारी बिरुवाहरू सौझपख सार्नुहोस् र मिने अर्ली जातको मुला रोप्नुहोस्।
- वेमोसमी बकुन्ला सिमी लगाउन शुरु गर्नुहोस्।
- यो समयमा भेडाबाख्रामा ब्रिफर रोग देखा पर्न सक्ने भएकोले यो रोग देखा परेमा स्थानीय पशु सेवा शाखामा सम्पर्क गर्नुहोस्।
- ठुला भुरा/फिगरलिंग र खानेमाछा उत्पादनको लागि सन्तुलित र २५ प्रतिशत प्रोटीन भएको दाना शारीरिक तौलको ३-५ प्रतिशतका दरले दैनिक दिनुहोस्।
- आगामी साता पानी पर्ने संभावना रहेकोले सापिशेक आर्द्रता बढी हुने भएकोले दाना र परालमा दुसीको संक्रमण भई पशुवस्तुको पाचन कियामा समस्या आउन सक्ने भएकोले दाना र पराललाई ओभानो ठाउँमा राख्नुहोस्। साथै परालमा दुसी लागेको शंका लागेमा राप्पोसँग घाममा सुकाएर मात्र खुबानुहोस्।
- कृषि सम्बन्धी जिज्ञासाको लागि हरेक सोमबार दिउँसो २ देखि ४ बजेभित्र नार्क कृषक टोल फ्रि फोन नम्बर-११३५ (पैसा नलाग्ने फोन सेवा) मा (एनसेल र एनटिसिका फोन प्रयोग गर्ने कृषकहरूले) सम्पर्क गरि बिज्ञहरूसँग प्रत्यक्ष कुराकानी गर्नुहोस्।



In the above graph, blue dotted line indicates the average of daily accumulated normal precipitation of 20 stations throughout the year (Jan - Dec) and pink solid line indicates the average of daily accumulated precipitation of this year. The 20 stations are shown in the map below.



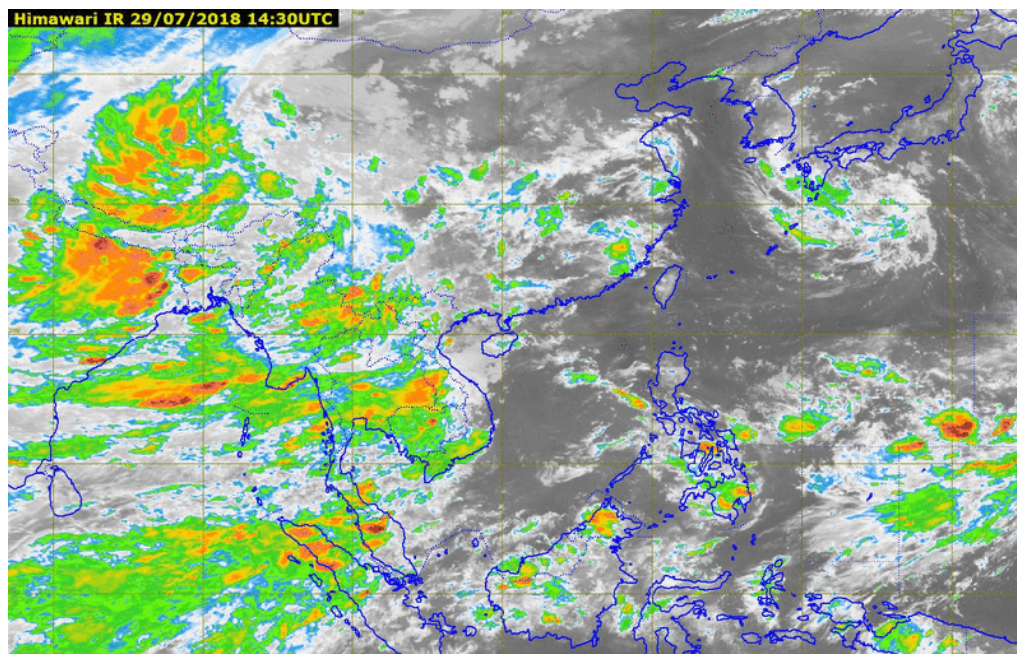
In the above graph, blue dotted line indicates the average of daily accumulated normal precipitation of 20 stations throughout the year (Jan - Dec) and pink solid line indicates the average of daily accumulated precipitation of this year. The 20 stations are shown in the map below.



Rainfall Distribution map (daily)

(map: Location map of 20 stations used in the above)

Hydrology Service products: and Early Warning



and Irrigation
१०. बाढी पुर्वानुमान सेवा: **Rainfall Watch**

Not Secure - hydrology.gov.np

Hydrology

Government of Nepal
Ministry of Energy, Water Resources and Irrigation
Department of Hydrology and Meteorology
Hydrology Division I Flood Forecasting Section

HOME REAL TIME DATA RIVER WATCH RAINFALL WATCH CURRENT FORECAST FLOOD HAZARD MAP COMMUNITY OUTREACH PROJECTS PUBLICATIONS

Last updated on Tue, Sep 17, 2019 10:51 PM

S.N	Basin Name	Station Index	Station Name	District	Accumulated Rainfall in mm (in Last)					Status
					1 hour	3 hour	6 hour	12 hour	24 hour	
1	Narayani	473	Rikhsola at Bankatti	Chitwan	0	0	0	14.6	226	WARNING
2	Narayani	704.5	Danda	Nawalpur	0	0	0	10.2	158	WARNING
3	Baghmati	1077	Sundarjal	Kathmandu	88.6	114.2	114.2	188	184.6	WARNING
4	Narayani	9303	Kalyanpur	Chitwan	0	0	0	15.8	153.2	WARNING
5	Narayani		Makwaspur Gadhi	Makwaspur	9.2	44.2	49.2	94.6	154	WARNING
6		326	Dishawal	Jumla		0	0	0	0	BELOW WARNING LEVEL
7		525	Pangpur Kalimati					1.8	2	BELOW WARNING LEVEL
8		3023	Kalbi		1.8	6.2	15.4	15.8	16	BELOW WARNING LEVEL
9		1071	Budhan/Kanthu		0	0	0	0	0	BELOW WARNING LEVEL
10			Udaypur, Gaighat					3.6	5	BELOW WARNING LEVEL
11			Mamang Jagat		0	0	0	1.4	6.4	BELOW WARNING LEVEL

१०. बाढी पुर्वानुमान सेवा: **River watch**

Hydrology

Government of Nepal
Ministry of Energy, Water Resources and Irrigation
Department of Hydrology and Meteorology
Hydrology Division I Flood Forecasting Section

HOME REAL TIME DATA RIVER WATCH RAINFALL WATCH CURRENT FORECAST FLOOD HAZARD MAP COMMUNITY OUTREACH PROJECTS PUBLICATIONS

Last updated on Sat, Jul 13, 2019 3:23 AM

S.N	Basin Name	Station Index	Station Name	Water Level (m)	Approx Flow (m ³ /sec)	Warning Level (m)	Danger Level (m)	Trend	Status	O & M by
1	Baghmati	586	Baghmati River at Rai Gani Fri, Jul 12, 2019 4:00 PM	11.06	-	7.90	8.50	RISEING	DANGER	DHM
2	Baghmati	589.5	Baghmati at Kumbhali (Putherdhovan) Sat, Jul 13, 2019 5:40 AM	9.06	-	6.6	6.8	FALLING	DANGER	DHM
3	Baghmati	550.05	Baghmati at Khobara Sat, Jul 13, 2019 5:00 AM	3.55	-	3.50	4.80	FALLING	WARNING	DHM
4	Karnali		Karnali River at Rankha Sat, Jul 13, 2019 3:10 AM	4.26	-	3.30	4.50	FALLING	WARNING	DHM
5	Mahakali	100	Mahakali at Dherdula (Daru) Fri, Jul 12, 2019 5:30 PM	6.13	-	5.80	6.80	STEADY	BELOW WARNING LEVEL	Dept. of Hydrology & Meteorology (DHM)
6	Mahakali	166.5	Sumnaga Gad at Gajar Gani Sat, Jul 13, 2019 2:05 AM	7.58	-	4.90	5.00	STEADY	BELOW WARNING LEVEL	DHM
7	Mahakali	178	Mahakali at Pangson Sat, Jul 13, 2019 3:15 AM	2.83	-	5.80	7.00	RISEING	BELOW WARNING LEVEL	DHM
8	Mahakali		Mahakali Khola Sat, Jul 13, 2019 12:01 AM	0.89	-	4	4.9	STEADY	BELOW WARNING LEVEL	DHM
9	Karnali	215	Huma Karnali at Lalghat Sat, Jul 13, 2019 5:45 AM	4.51	-	7.50	8.30	RISEING	BELOW WARNING LEVEL	DHM
10	Karnali	225	Saga Khola at Dheru Fri, Jul 12, 2019 3:15 PM	1.76	-	3.80	4.30	STEADY	BELOW WARNING LEVEL	DHM

- रूपमा बढ्ने पुर्वानुमान छ।
- भोली ईलाम, झापा, मोरङ, धनकुटा, सुनसरी, सप्तरी, उदयपुर, सिन्धुली, मकवानपुर, सिन्धुपाल्चोक, चितवन, नवलपरासी, रूपन्देही, पाल्पा, तनहुँ, स्याङ्जा, गुल्मी, अर्घाखाँची र आसपास मध्यम वर्षा हुन सक्ने तथा उक्त जिल्ला भई बहने साना नदीहरूमा बहाव बढ्दो क्रममा हुने पुर्वानुमान छ।
 - भोली प्रदेश २ को चुरे र तराईबाट बहने केही स-साना नदीहरूमा पनि बहाव सामान्य बढ्ने पुर्वानुमान छ।
- पुर्वानुमान पर्सि असोज ०७ (मंगलबार)**
- पर्सि कन्काई, कोशी, कमला, बागमती, नारायणी, पश्चिम राप्ती, खर्दी, कर्णाली, महाकाली लगायत यसका शाखा नदीहरूमा बहाव सामान्य बढ्दो क्रममा हुने तथा सबै नदीहरूमा बहाव सतर्कता तह भन्दा तलै हुने पुर्वानुमान छ।
- सरोकारवालाका लागि परामर्श (Advisory):**
- आज र भोली कन्काई, कोशी, कमला, बागमती र यसका सहायक नदीमा बहाव बढ्ने, सतर्कता तह तलै हुने पुर्वानुमान रहेपनि केही सहायक नदीमा बहाव आकस्मिक रूपमा बढ्न सक्ने संभावना रहेकाले सामान्य सतर्कता अपनाईराखी।
 - आज ईलाम, पाँचथर, झापा, मोरङ, सुनसरी, धनकुटा, संखुवासभा, प्रदेश २ का सबै जिल्ला, उदयपुर, सिन्धुली, मकवानपुर, सिन्धुपाल्चोक, नुवाकोट, रसुवा, चितवन, धादिङ, गोरखा नवलपरासी, रूपन्देही, कपिलवस्तु, पाल्पा, अर्घाखाँची, गुल्मी, दाङ, बाँके, बर्दिया, प्युठान, रोल्पा, सल्यान, सुर्खेत र आसपास जिल्लामा मध्यम वर्षा हुन सक्ने र उक्त जिल्ला भई बहने साना नदीहरूमा बहाव बढ्ने र केही स-साना नदीहरूमा बहाव सतर्कता तह आसपास सम्म पुग्ने पुर्वानुमान रहेकाले यात्रा गर्दा सामान्य सतर्कता अपनाईराखी।
 - प्रदेश १ र ३ को पहाडी भू-भागको कमजोर भिरालो र पहिरोग्रस्त क्षेत्रमा सामान्य सतर्कता अपनाओ।
- (बाढी पुर्वानुमान तुरन्तै यस विभागको वेबसाइट मा समेत हेर्न सकिने छ) विभागको फेसबुकपेज **Nepal Flood Alert** (नेपाल बाढी सूचना) हेर्न। विभागको ट्विटर पेज: **Nepal Flood Alert** (नेपाल बाढी सूचना) हेर्न।

Forecast References:

- 1) Real Time Ground Observation System for Rainfall (around 120 stations) and Water levels(Around 85 Stations) under Flood Forecasting Section, DHM
http://hydrology.gov.np/#/river_watch?k=60xgcy
http://hydrology.gov.np/#/rainfall_watch?k=407hrv

Flood Early Warning Dissemination

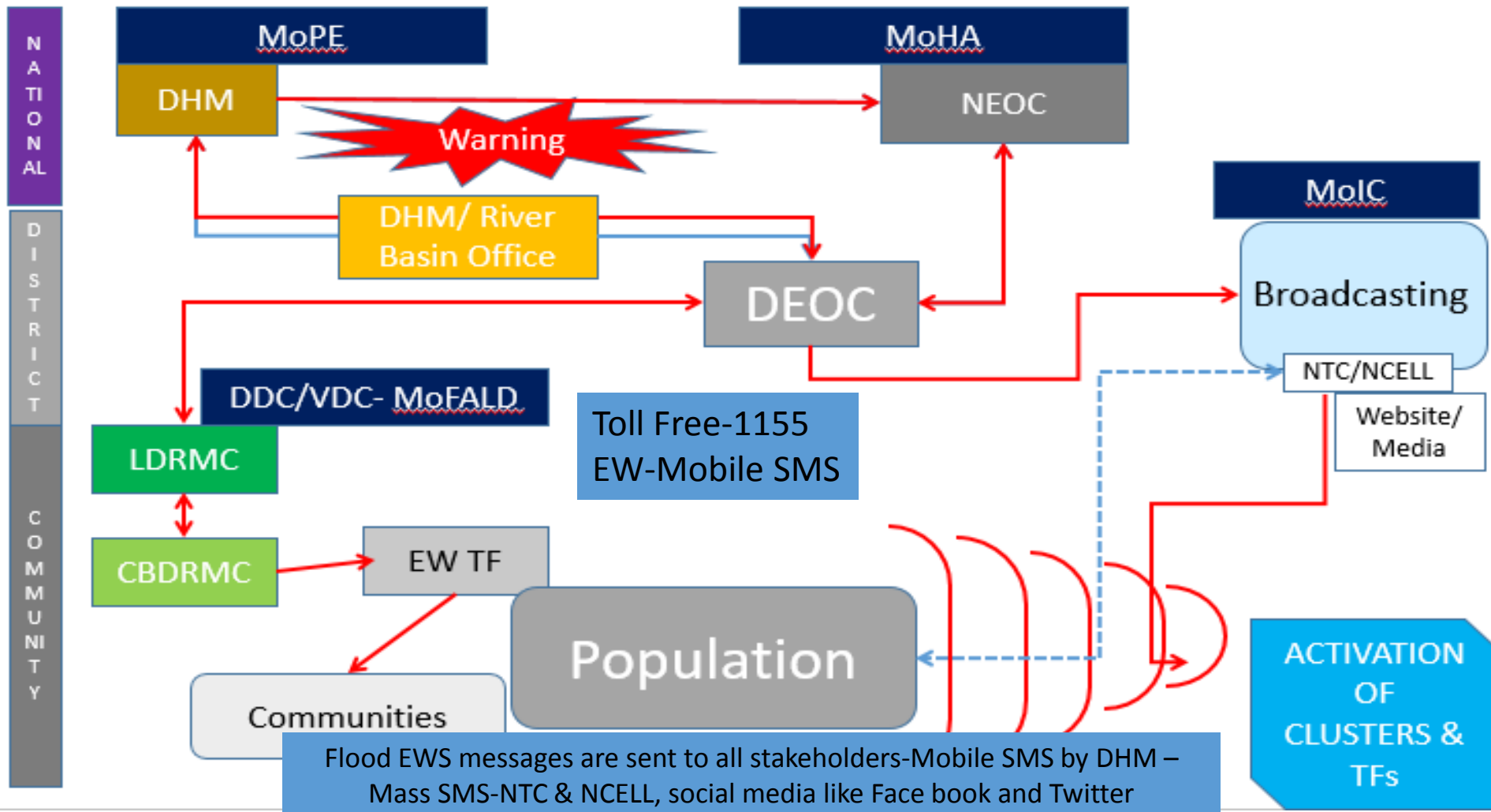
MoHA: Ministry of Home Affairs (गृह मंत्रालय),

MoPE: Ministry of Energy Water Resources and Irrigation(ऊर्जा जलस्रोत तथा सिंचाइ मंत्रालय)

MoFALD: Ministry of Federal Affairs and Local Development (संघिय मामिला तथा स्थानिय विकास मंत्रालय)

NEOC: National Emergency Operation Centre (राष्ट्रिय आपतकालिन संचालन केन्द्र)

DEOC: District Emergency Operation Centre जिल्ला आपतकालिन संचालन केन्द्र)



Challenges and Opportunities

Challenges

- I. Lack of Hydro-meteorological stations in remote mountainous area
- II. Communications interruptions due to power failure and inaccessibility conditions in extreme weather conditions
- III. Less Prioritized Sector for Allocating Resources (Human Resources Deficiency, Financial Constraints and Less Logistics Support)
- IV. Uncertainties in Forecast are unavoidable and Reliability decreases with increase of lead time
- V. Lack of Strong coordination among concerned Stakeholders and Organizations
- VI. Lack of adequate skilled manpower

Opportunities

- I. Collaboration with hydropower developers in mountainous region increase station density
- II. Satellite technology for data communication shall provide alternatives during extreme weather conditions
- III. Three tier federal government of Nepal shall change traditional priority. Enabling environment is being developed to implement Data/Service User Pay Policy
- IV. High-power Computers and ensemble forecast from high resolution models with data assimilation process decrease uncertainty thus enhance reliability of forecast
- V. Department of Irrigation, Department of Electricity Development, Nepal Electricity Authority and Water Resource Research and Development Centre, all, are under the same ministry. Strong coordination shall build among them
- VI. Revisit on Organization and Recruitment process is going on simultaneously. Collaboration with WMO, G2G and universities will enhance capacity of NHMS



Thanks For Your Attention