



WMO PR Familiarization



Nauru NMHS Progress Report

WMO Secretariat
Switzerland, Geneva

25th – 27th September 2019



Contents



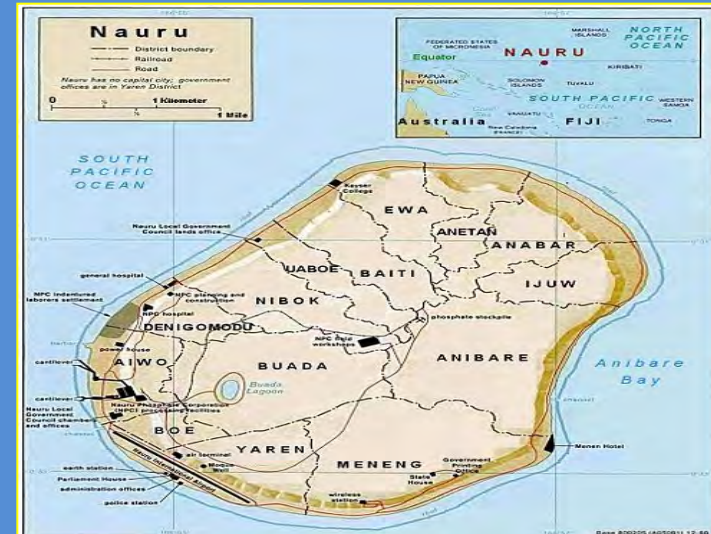
1. Nauru Geo-location
2. Mandate
3. Vision
4. Legal basis
5. Strategic plan
6. Organization structure
7. Human resource profile
8. Infrastructure (observation, computing network)
9. Service delivery (public weather service, aviation, climate service, hydrology, marine and EWS)
10. Challenges
11. Opportunities



Nauru Geo-location

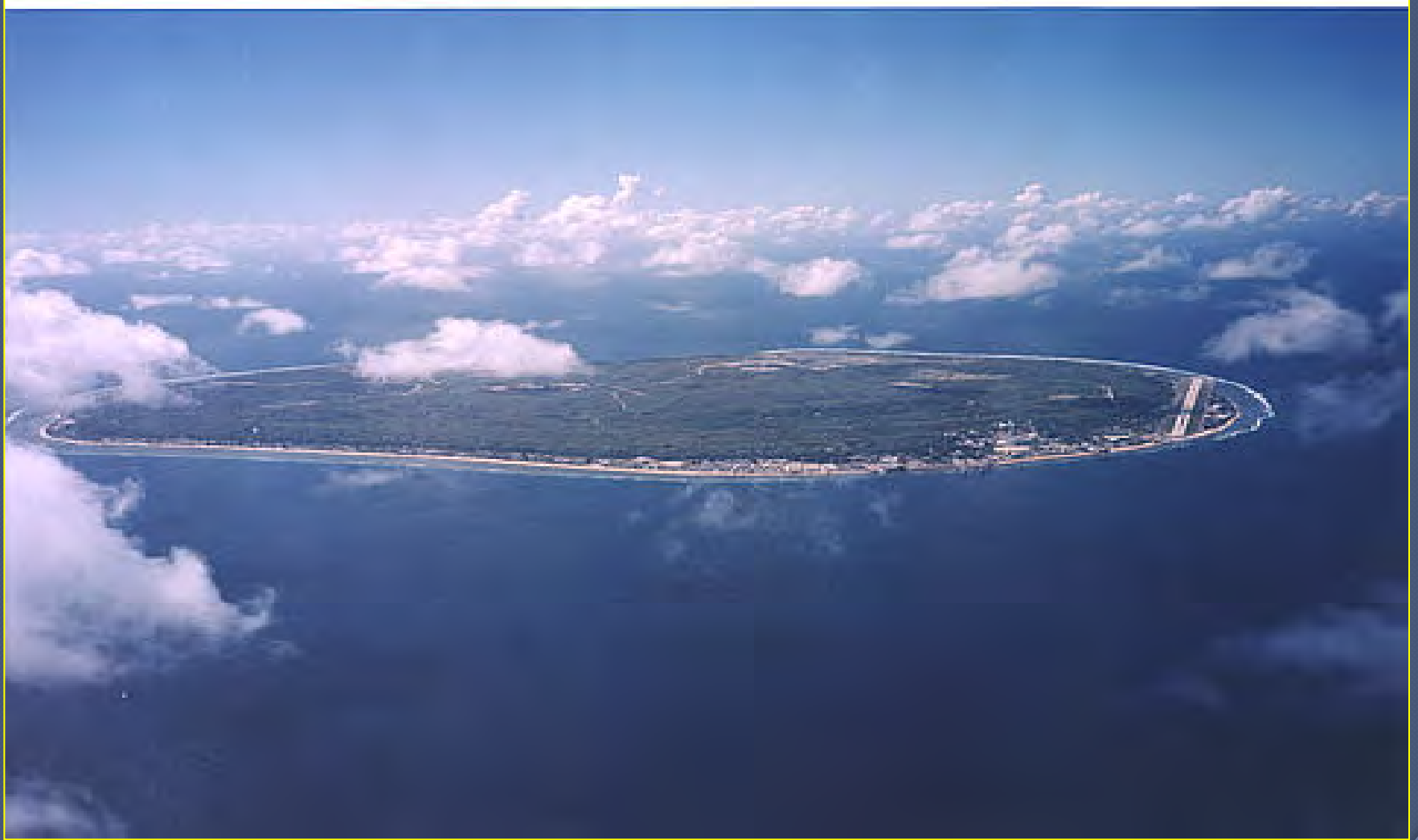


- Nauru is the third smallest Republic in the world
- Situated at 40km south of the equator and one of the isolated country in the world
- Circumference of Nauru is 24sq km
- Revenue: Phosphate and Fisheries Licensing
- Highest point of 70m above sea level
- Nearest country is Banaba Island at 300km due east
- Fiji due SE at 2,235km
- Brisbane due SW at 3,341km
- Population estimates at 12.4 thousand people:
 - Nauruan: 87% (10,788)
 - Expats: 5% (620)
 - Visitors: 8% (992)





Nauru Geo-location





Mandate



1. 11th May 2015 (establishment of NES Department)
2. 20th July 2015 (PMC3 recognized Nauru NMHS into PMC)
3. 16th May 2019 (WMO Executive recognizing Nauru NMHS as the newest 193rd member of the WMO)



A 2x3 grid of weather icons. The top row shows rain (blue clouds and raindrops), a smiling sun (yellow circle with rays and a face), and clouds (grey clouds with raindrops). The bottom row shows wind (green leaves and a swirl), storm clouds (dark grey clouds), and lightning (yellow lightning bolts).



Legal Basis



NDRM Act 2016:

- The Nauru NMHS as a legal body under the Ministry of the National Emergency Services
- Nauru NMHS issuance of EW messages of potential threats
- To establish an MOU with Nauru Aviation
- To establish an MOU with PNG weather services for the TAF bulletin
- To establish an Act for Nauru NMHS



Strategic Plan



- None in place!
- To create one!
- (request SPREP to assist in developing Strategic Plan)



Ministry Structure



President

NES Secretary

NES Director

NES AO

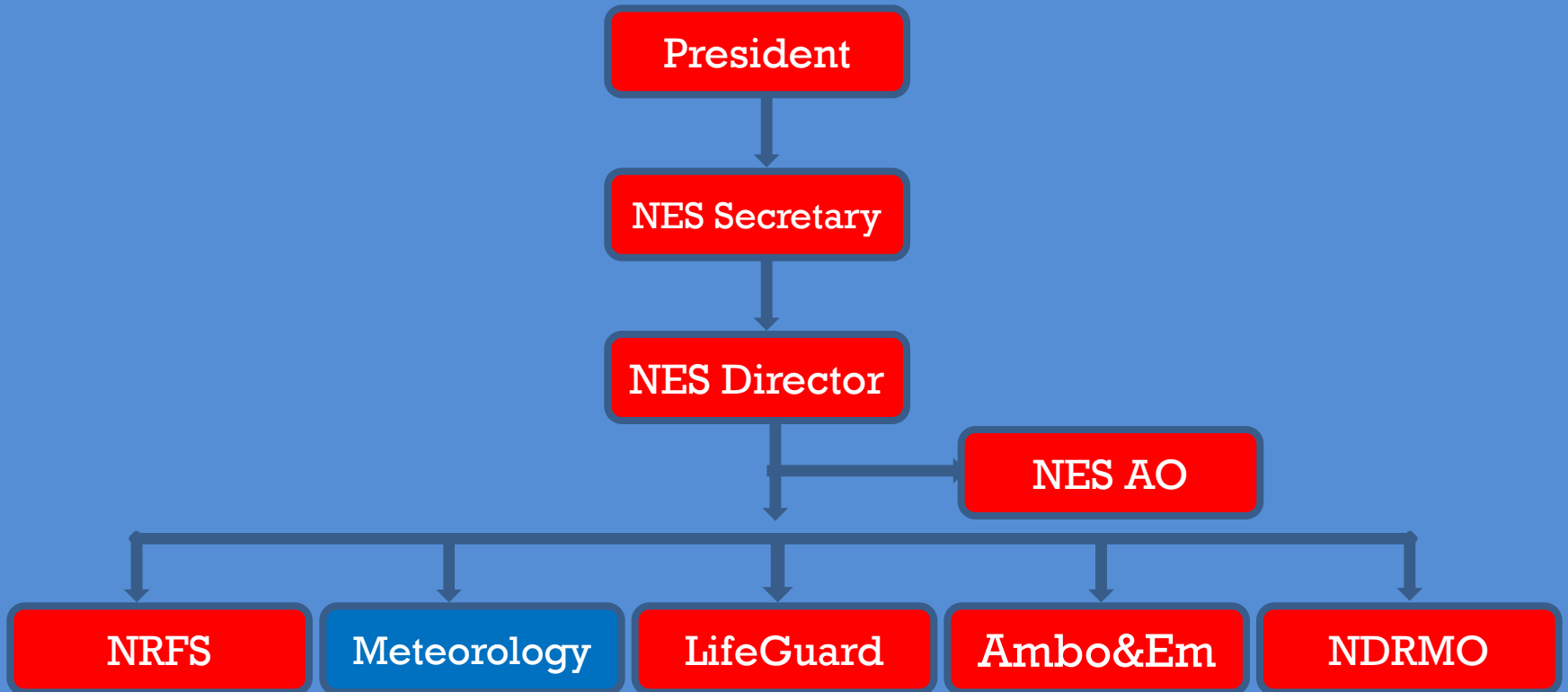
NRFS

Meteorology

LifeGuard

Ambo&Em

NDRMO

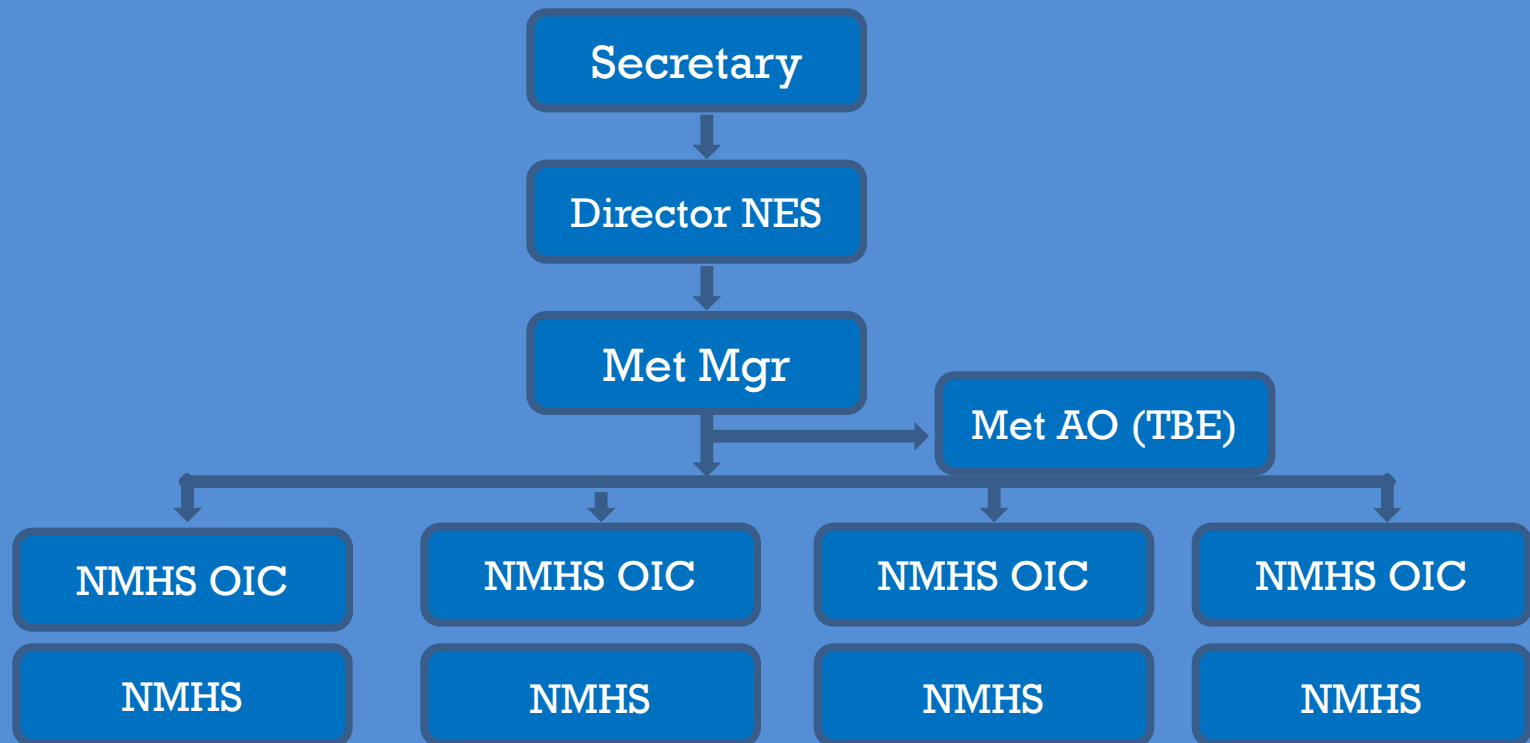




NMHS Structure



To Operate 24/7 on Nov19





Human Profile



- Certificate in Analysis of HIMAWARI data with SATAID
- Certificate in Introduction to Tropical Meteorology, Weather Analysis
- Certificate in Forecasting and Communication systems
- Certificate in Analysis and Application of HIMAWARI-8 data
- Certificate in Hydrology Analysis
- Certificate in Aviation Meteorology

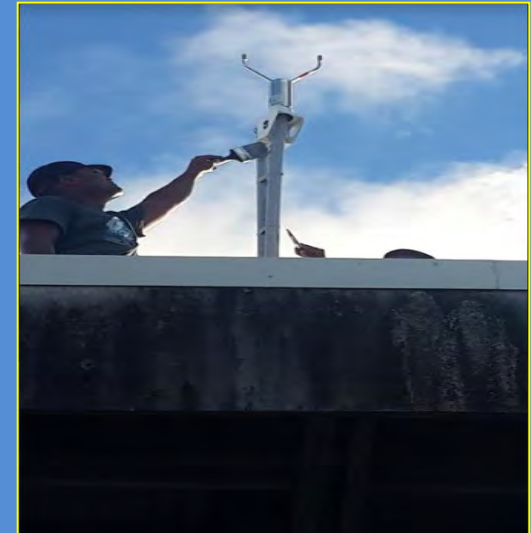


Infrastructure





Infrastructure cont...





Challenges & Opportunities



Challenges:

1. To construct the NEOC & MET Centre (require funding)
2. Need further training
3. Need more required met equip

Opportunities:

1. Becoming a member of the WMO family
2. Establishing partnership with Fiji Met Services
3. Continue to strengthen partners with JICA, NIWA, UNDP RESPAC, SPREP and other donors



END



MERCI

DANKE

TUBWA