

# WMO Community Platform



WORLD  
METEOROLOGICAL  
ORGANIZATION

A view of Earth from space, showing the Americas. The Earth is a blue sphere with white clouds and green landmasses. The text is overlaid on a semi-transparent blue rectangle in the center.

INTRODUCING THE NEXT GENERATION  
WMO COUNTRY PROFILE DATABASE  
THAT WILL TRANSFORM  
HOW WE

# The Community Platform

- One platform for everyone
- A community who collaborates
- Better monitoring and evaluation
- Evidence for good governance
- WMO Structure (Congress, Executive Council, Focal Points)



# Experts Database

- Maintain an updated experts profile
- Working Groups nominations
- Manage Group memberships
- Experts Profiles available online



# Country Profiles



- Avoid duplication of surveys
- Up-to-date Member/Partner information
- Data available to everyone
- Business Intelligence Tools (Power BI Dashboards)

# Collaboration

- Collaborate on the latest documents
- Single platform to manage all documents
- Easier to share with other groups
- Knowledge Platform



# Event Management

- Connected to your experts profile
- Receiving invitations
- Confirm your participation
- Follow-up



# WMO Related Activities

- Secretariat, Members, Partners
- All Hydro-Meteorological Projects
- Activity areas
- Capacities – Survey & Questionnaire
- Ongoing activities - Projects & Meetings
- WMO Fellowships
- Related documents



Single entry point



Log in now :



**community.wmo.int**

- Easy to navigate
- Seamless structure for all topics

# WMO Country Profile Database DASHBOARD for cg-18 (data updated)

[View in  
Power BI](#)

**Last data refresh:**

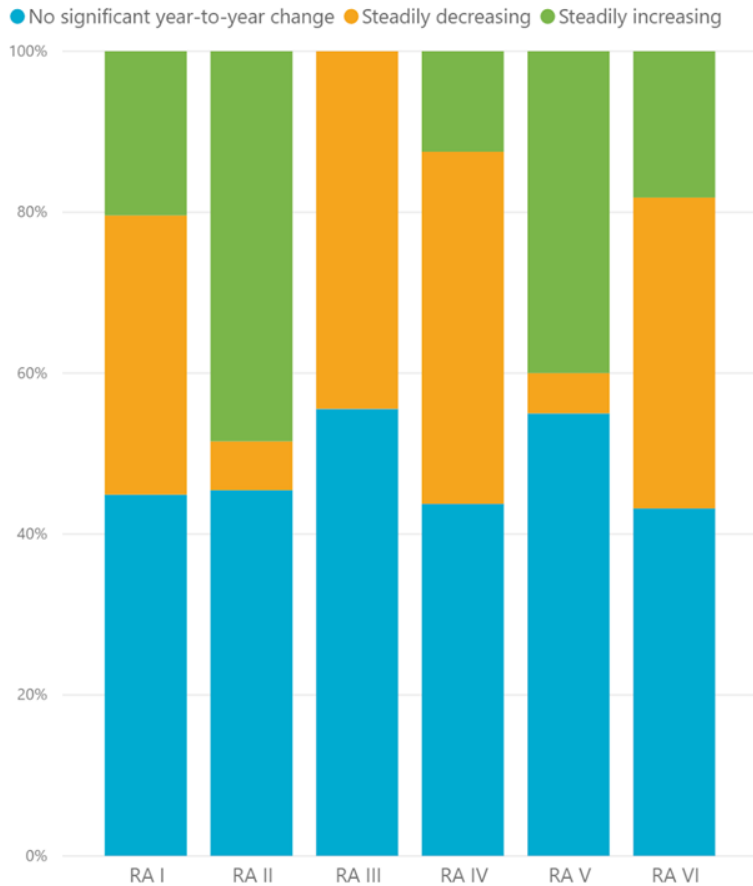
9/12/2019 10:40:19 AM  
Romance Standard Time

**Downloaded at:**

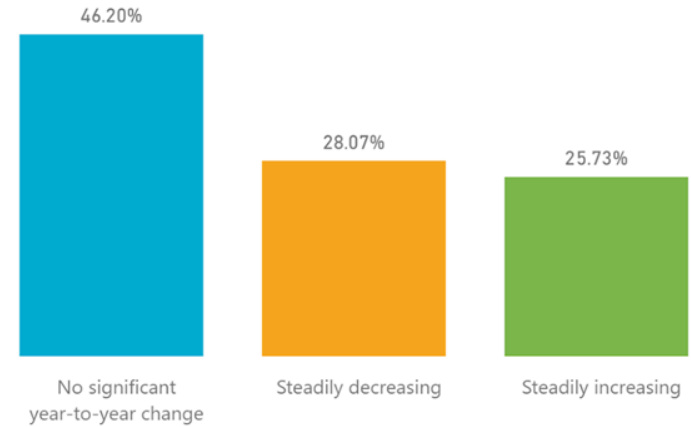
9/27/2019 11:07:35 AM  
Romance Standard Time

# Budget

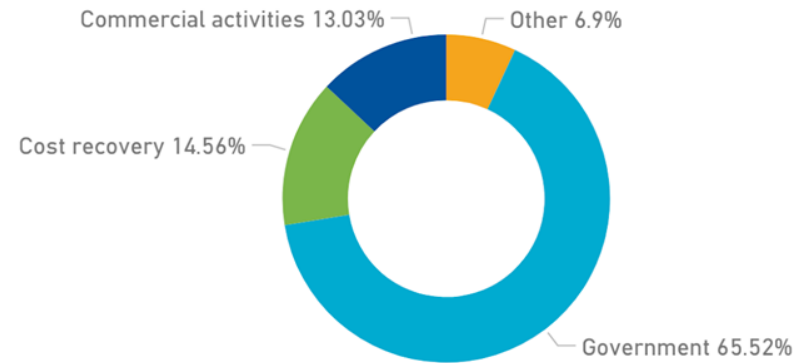
## Budget Trend by Region



## Budget Trend

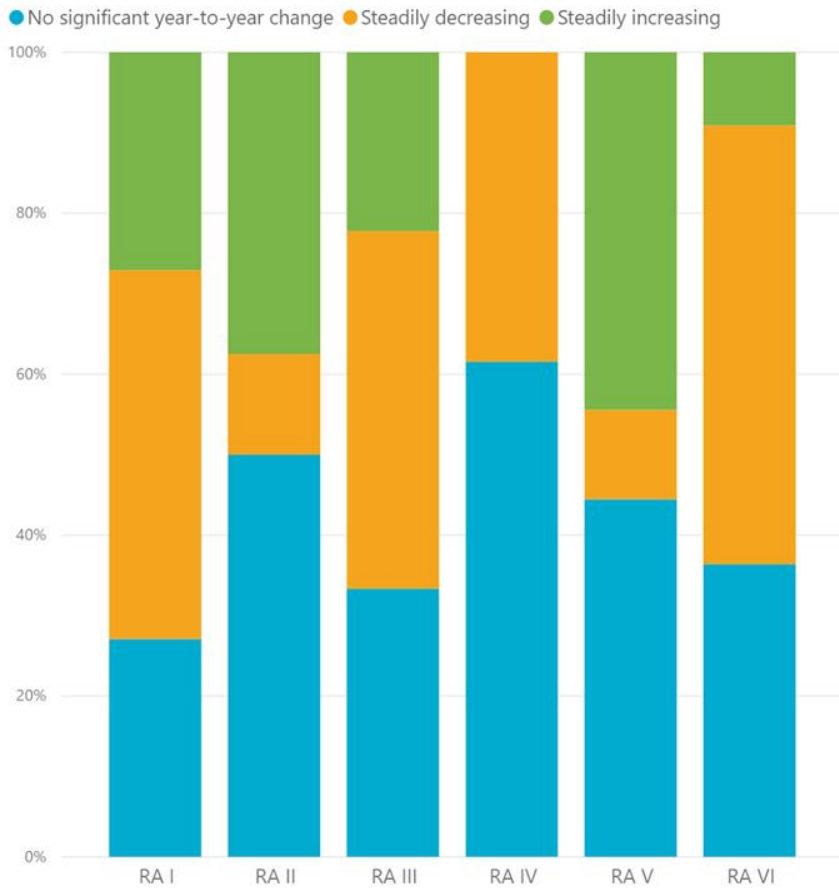


## Budget Source

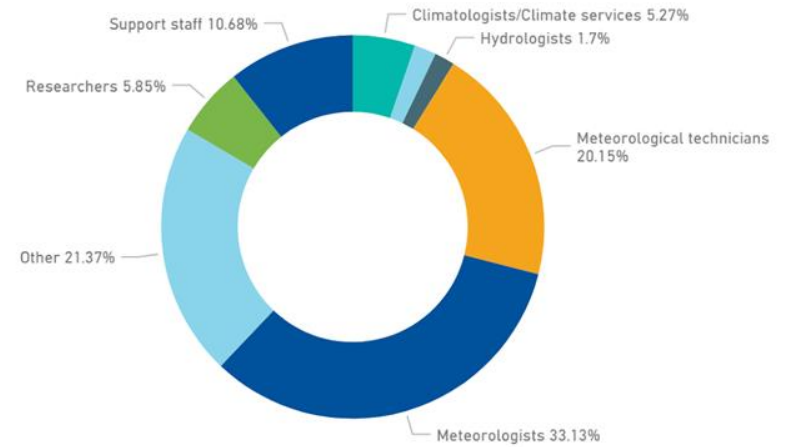


# Staff

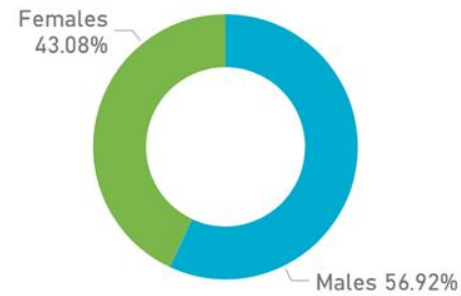
## Staff Trend



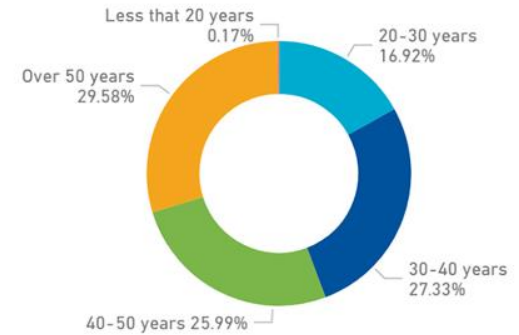
## Category Distribution



## Gender Distribution



## Age Distribution



# Observations and Data

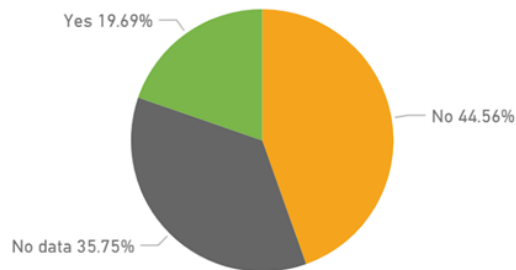
Select Region:

Select Region

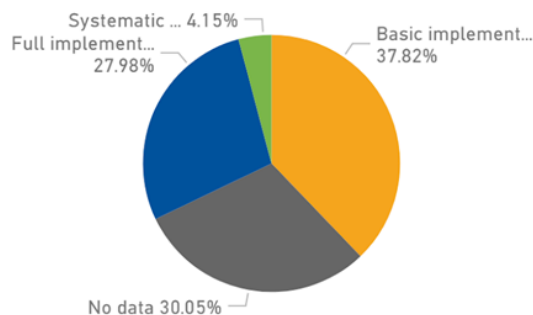
Select Member:

Select Member

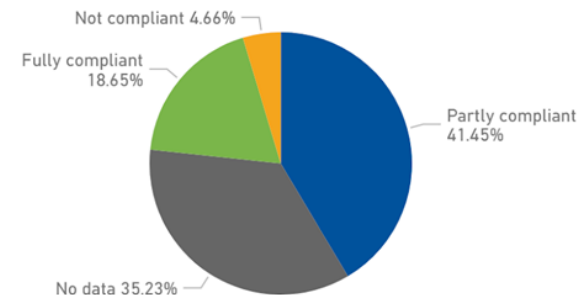
**National WIGOS Governance Mechanism**



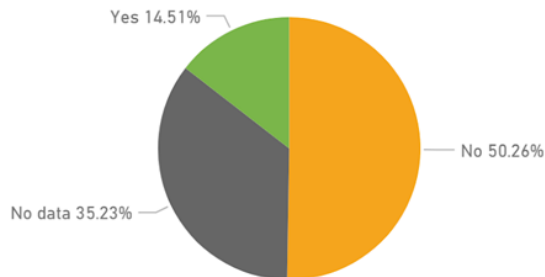
**Level of WIS Implementation**



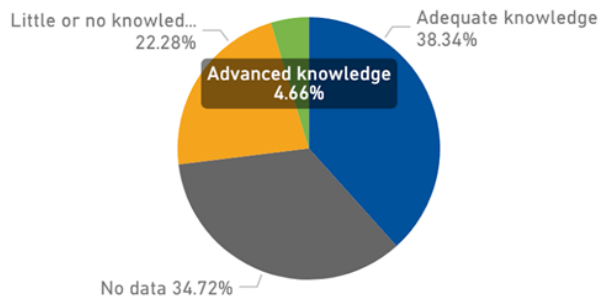
**Compliance with CDMS specifications**



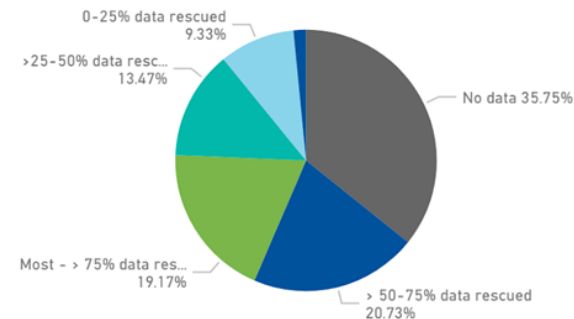
**WIGOS Plan Adopted**



**Knowledge of WIS**

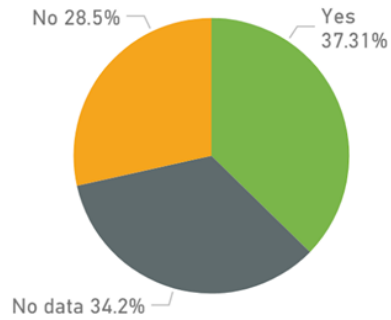


**Status of climate data rescue**

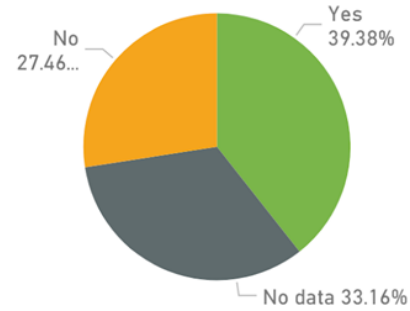


# Forecasts and Warnings

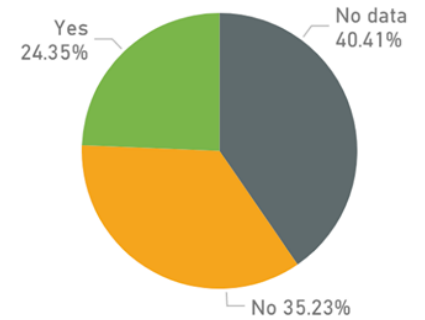
Impact Based Forecasts & Warnings



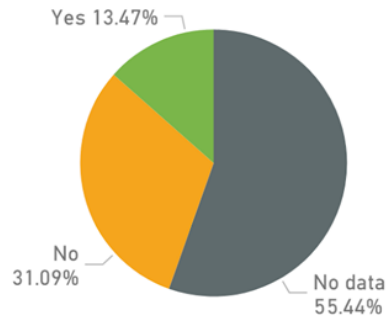
Multi-Hazard Early Warning Systems



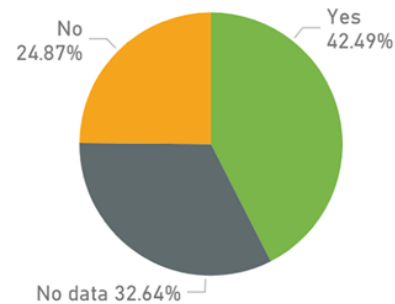
Quality Management System for Hydrolo...



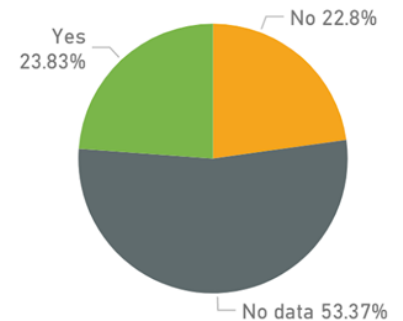
Decadal Forecasts



Monitoring & Forecasting Systems for ...



Warnings in CAP Format



Select Region:

Select region

Select Member:

Select Member

# Climate Services Implementation

Select Member



Select Region

RA I

RA II

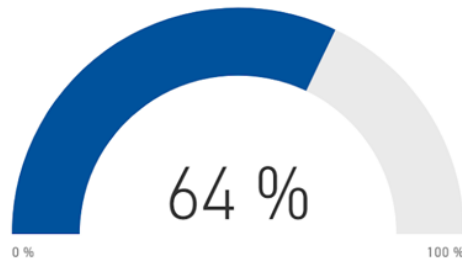
RA III

RA IV

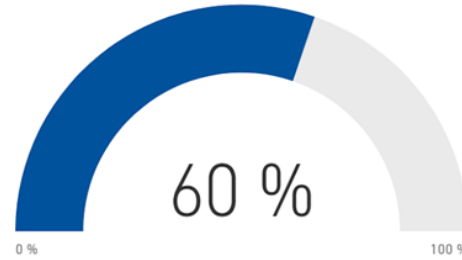
RA V

RA VI

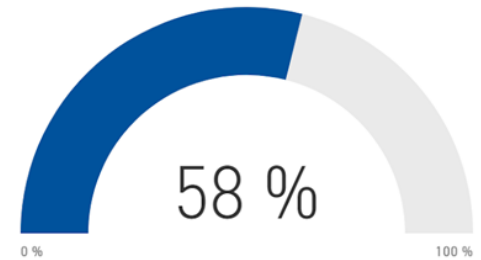
Governance %



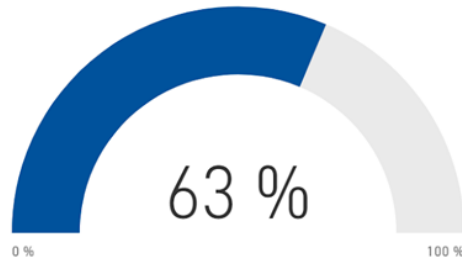
User Interface %



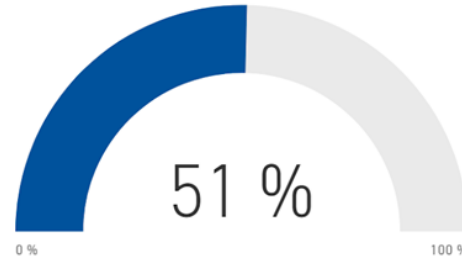
Basic Systems %



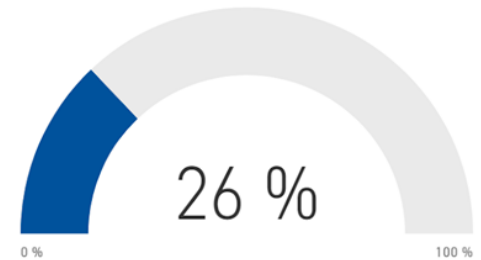
Provision and Application %



Capacity Development %

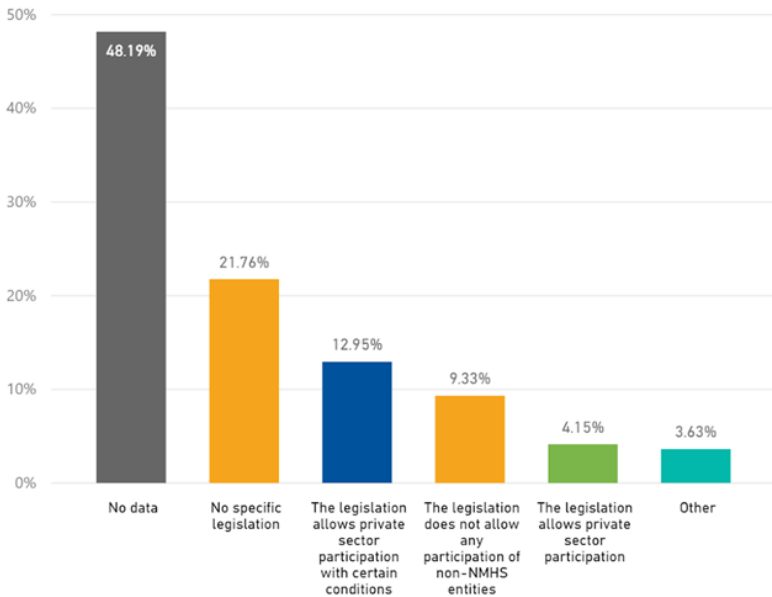


Monitoring and Evaluation %

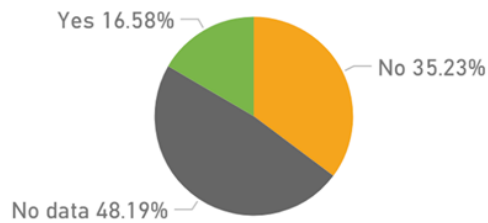


# Public Private Engagement

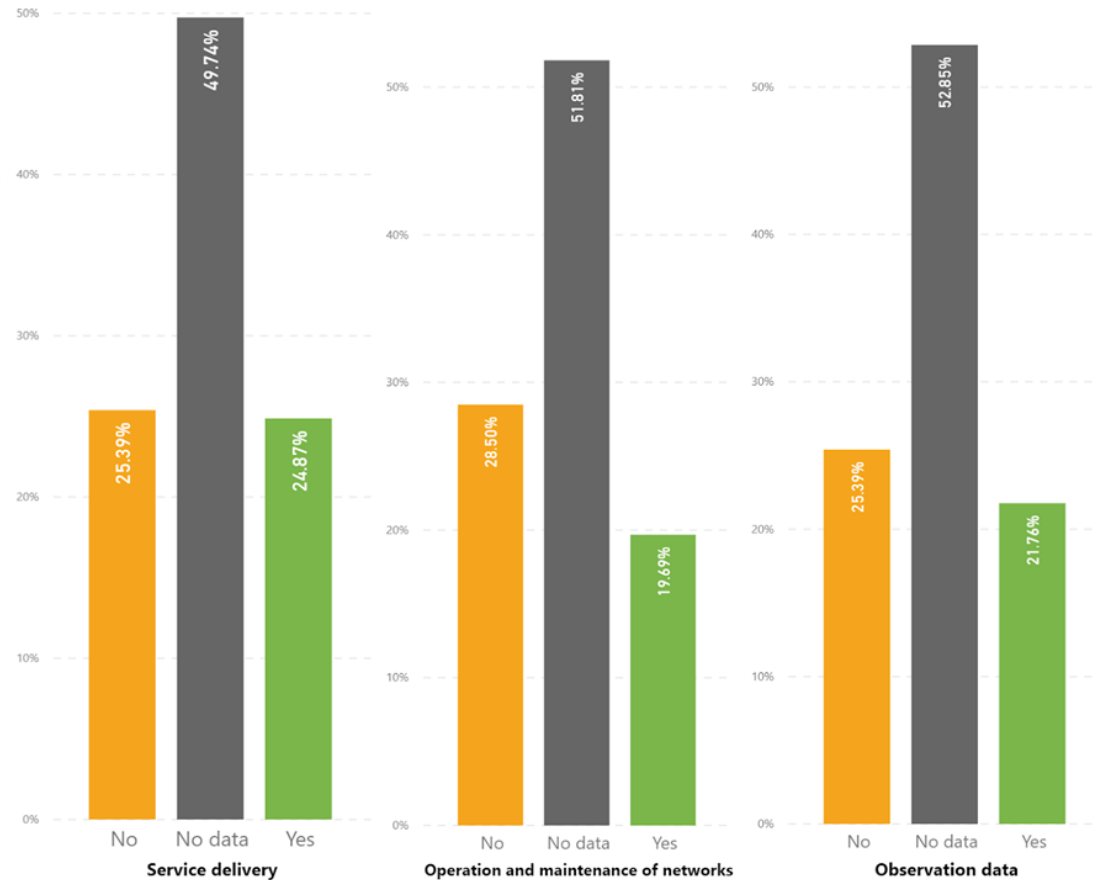
## Legislation on private sector participation in service delivery



## Consultative platform for dialogue (public/private/academia)



## Formal agreements between public and private sector



# Thank you



WORLD  
METEOROLOGICAL  
ORGANIZATION