

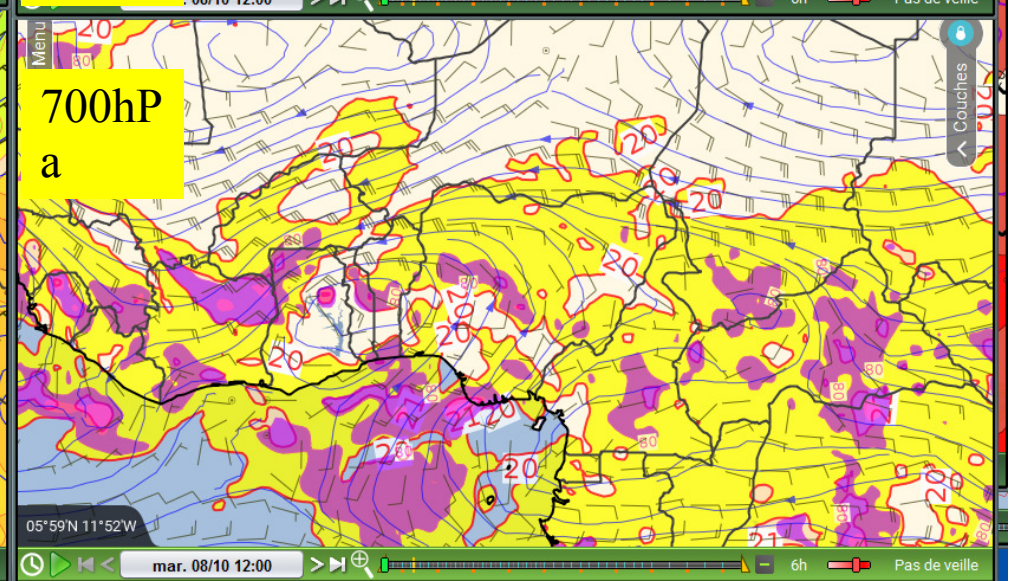
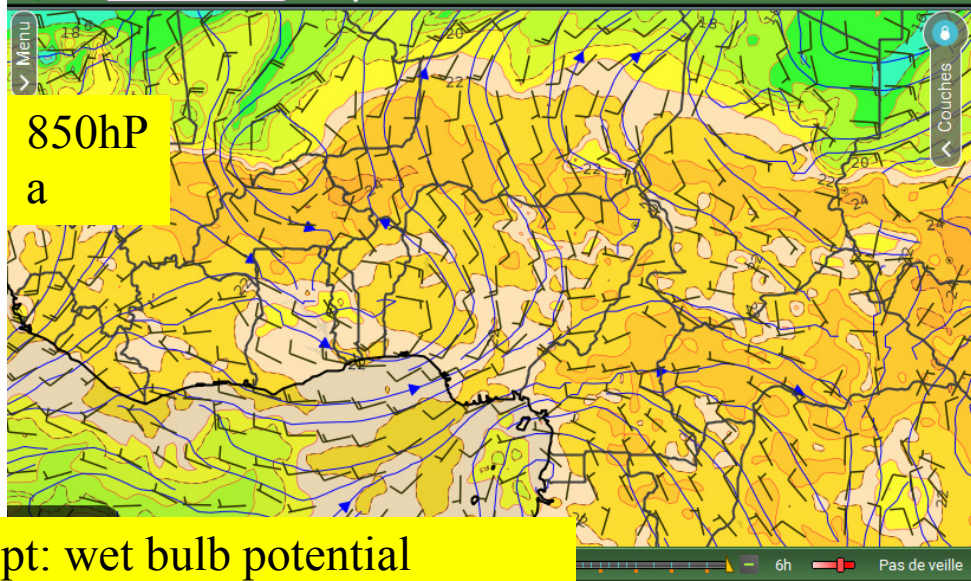
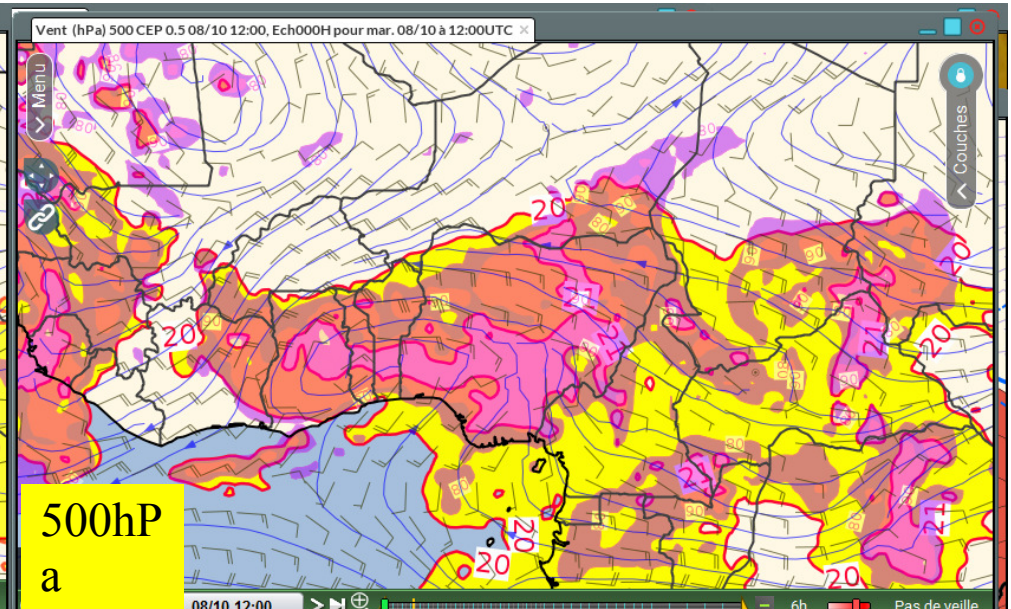
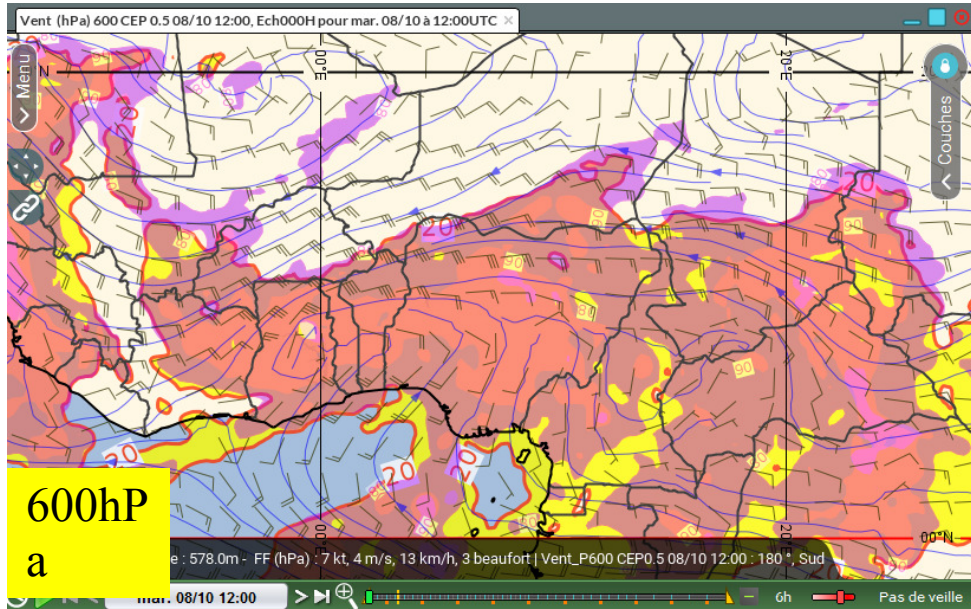


False MCC created by IFS

Ghana, Ivory Coast - 8 Oct 2019

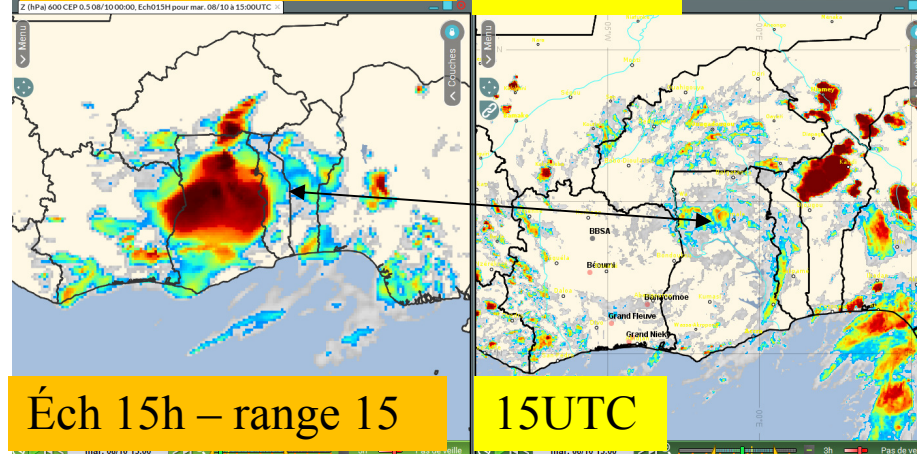
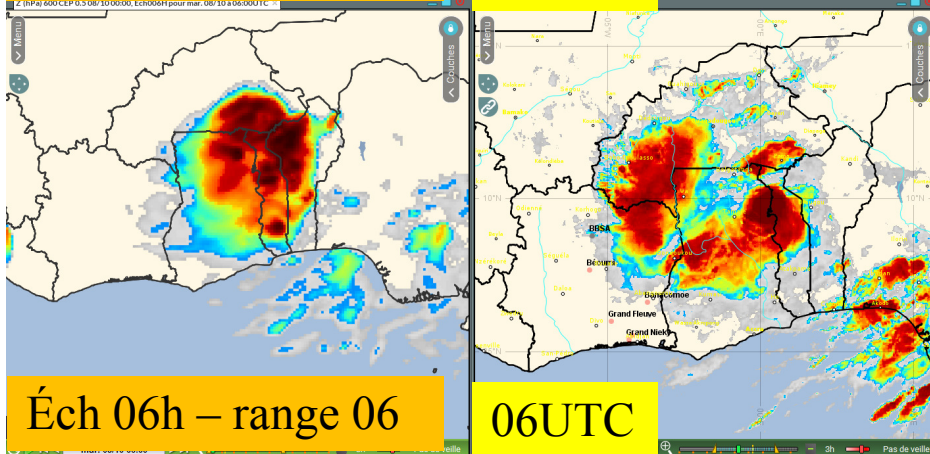
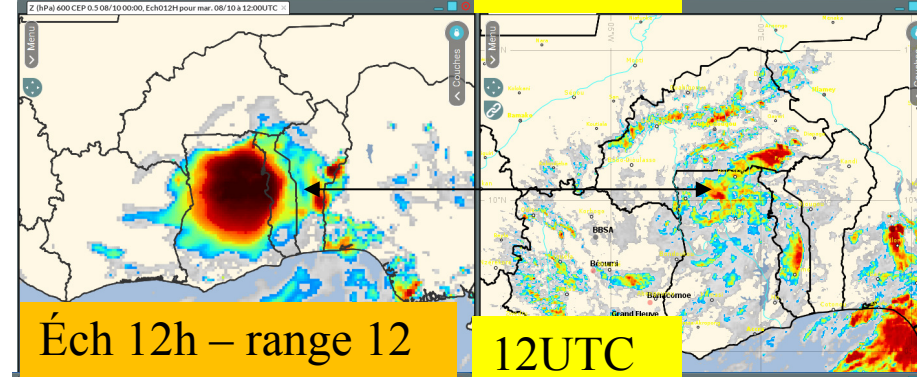
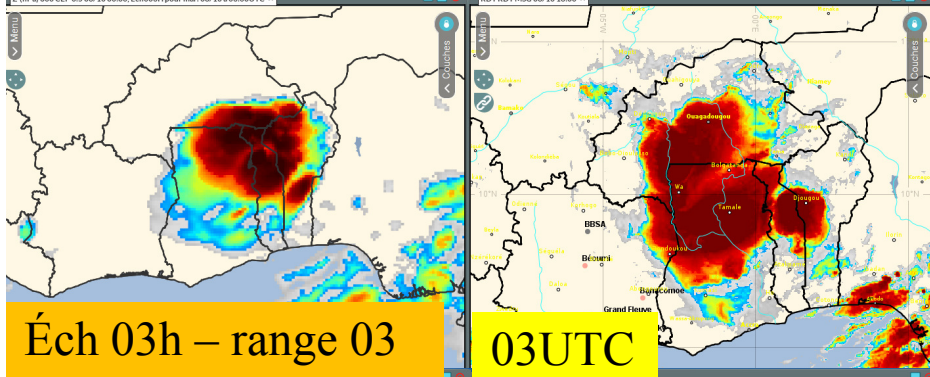
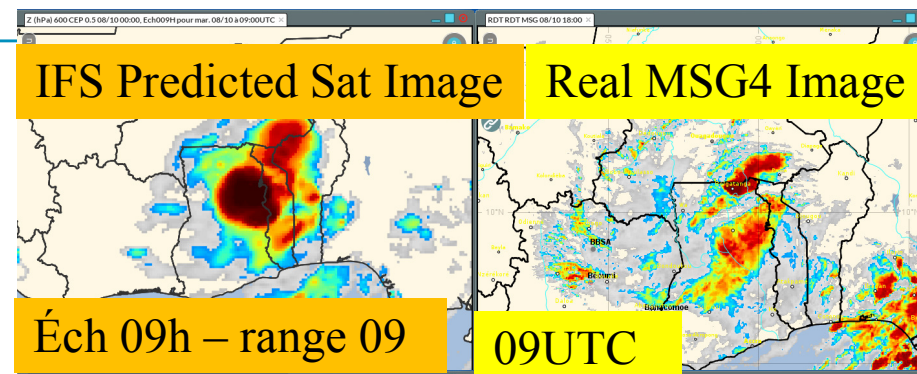
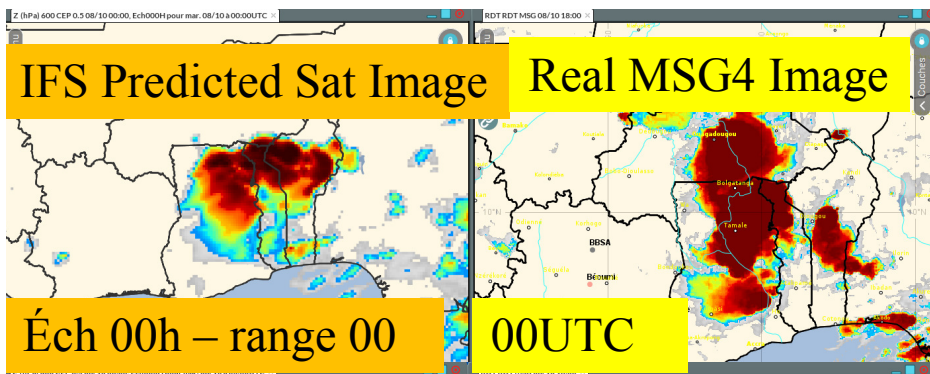
---

# IFS wbpt - Streamlines analysis - 8 oct 12UTC

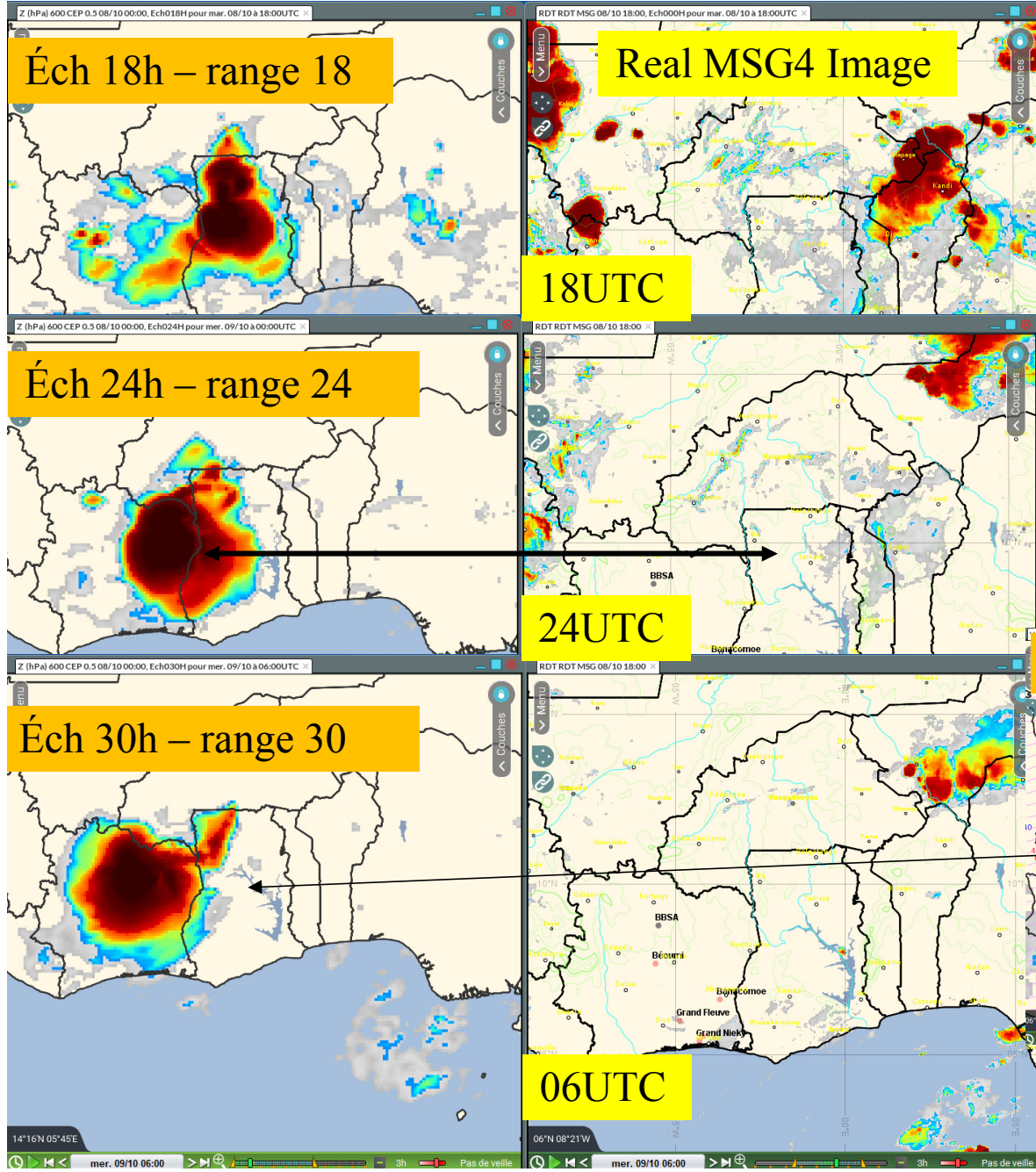


Wbpt: wet bulb potential temperature



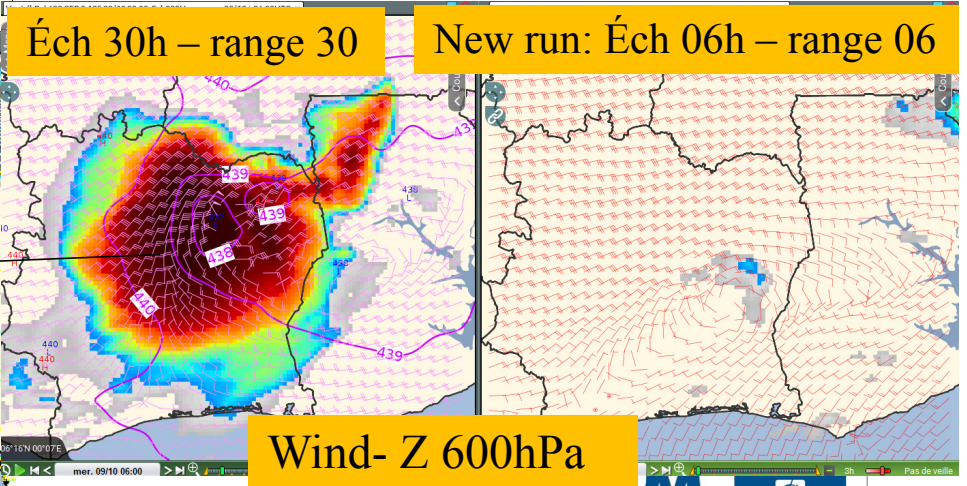






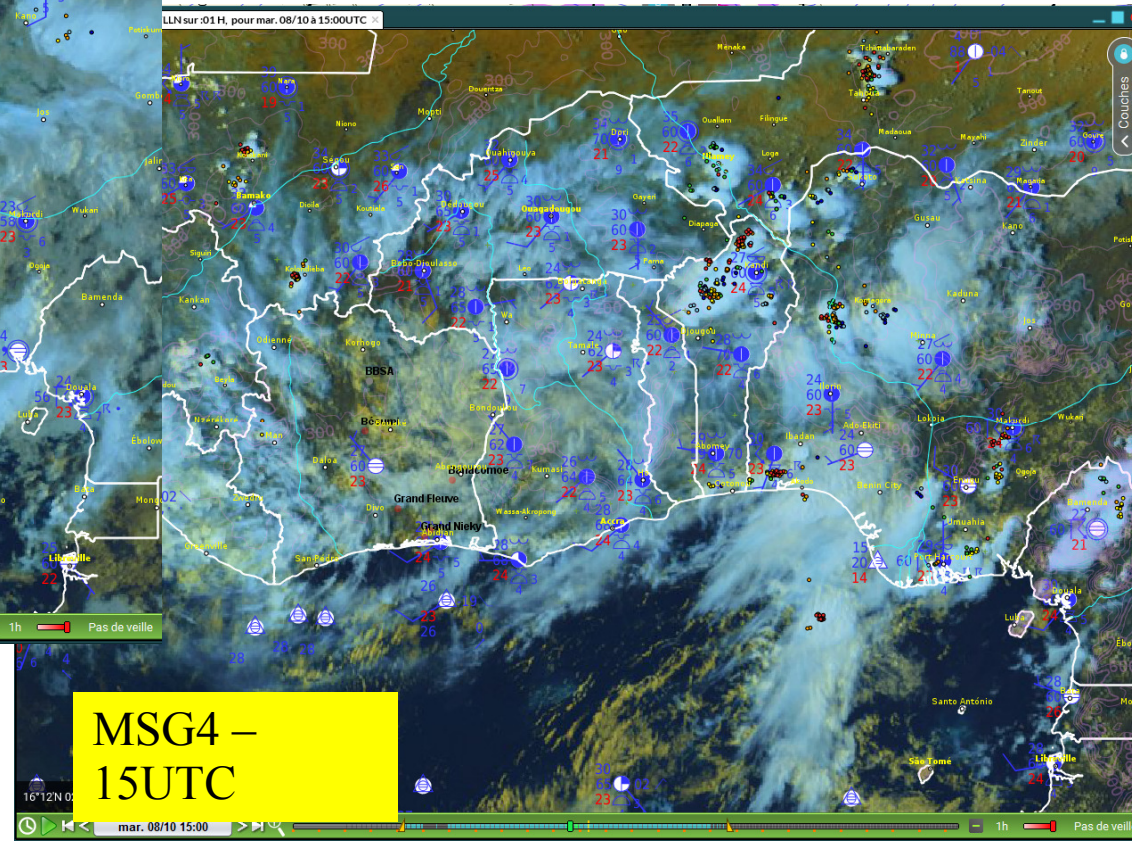
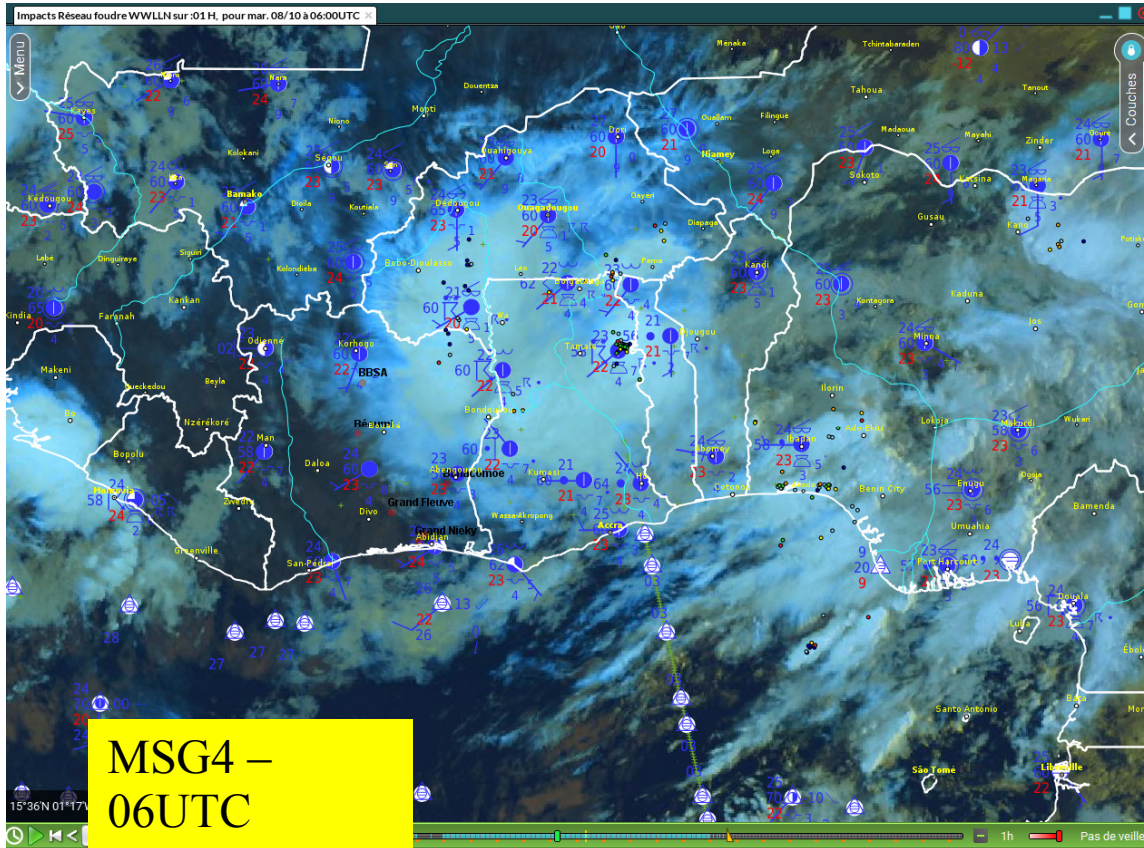
IFS creates a long-lived MCC  
 colocated with max of vorticity

In reality: morning MCS not long  
 enough to meet Maddox criteria for  
 MCC. Diurnal cycle of convection  
 develops new Cbs within the moist  
 airmass, outside the chore of strong  
 vorticity



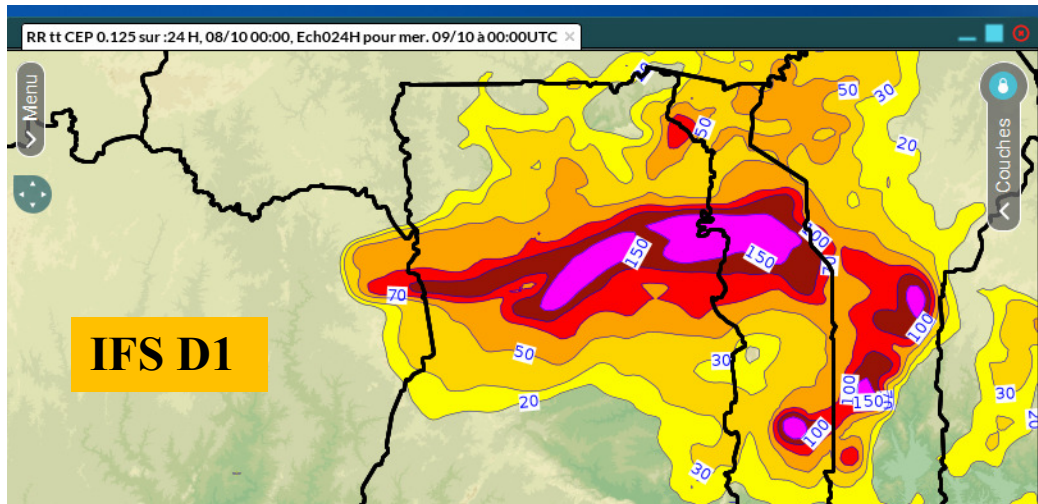


Mid-level cloudiness remnants of the MCS, inhibit the diurnal cycle of convection

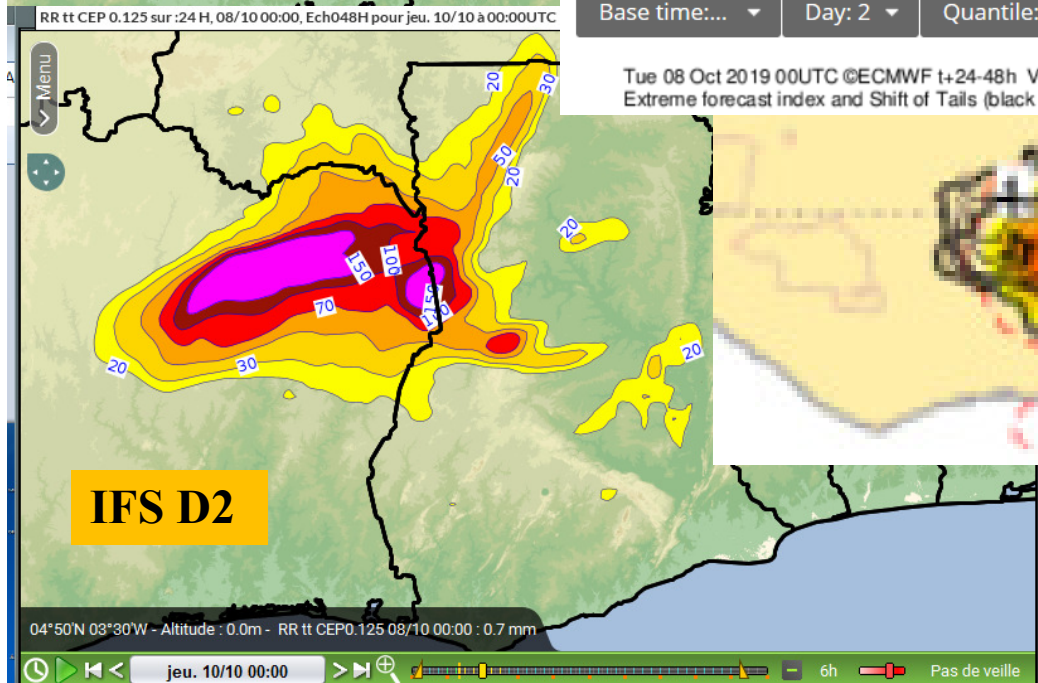




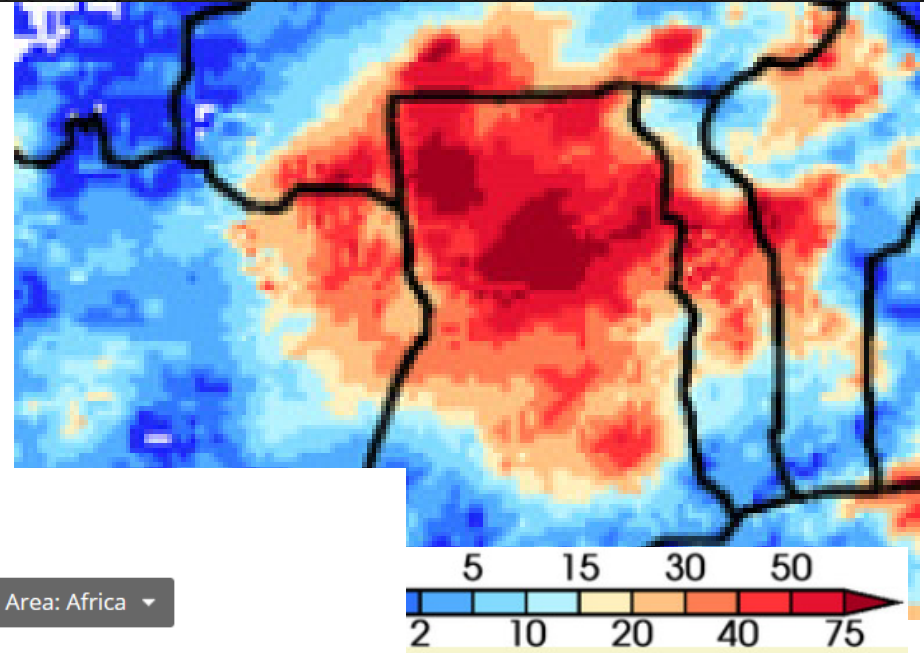
# 24 rain accumulation



EFI precipitation



3IMERGHHE GPM IMERG Early Precipitation  
Daily accumulated: 2019-10-08 Units: mm/day



Base time:... Day: 2 Quantile: 1 Area: Africa

Tue 08 Oct 2019 00UTC ©ECMWF t+24-48h VT: Wed 09 Oct 2019 00UTC - Thu 10 Oct 2019 00UTC  
Extreme forecast index and Shift of Tails (black contours 0,1,2,5,8) for total precipitation

