

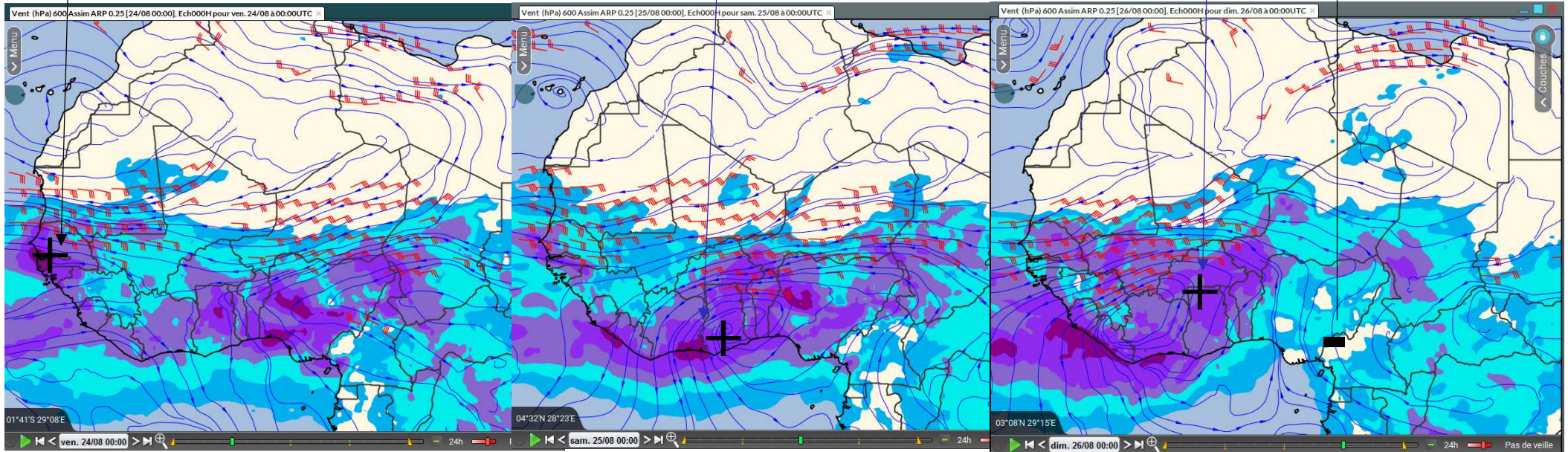
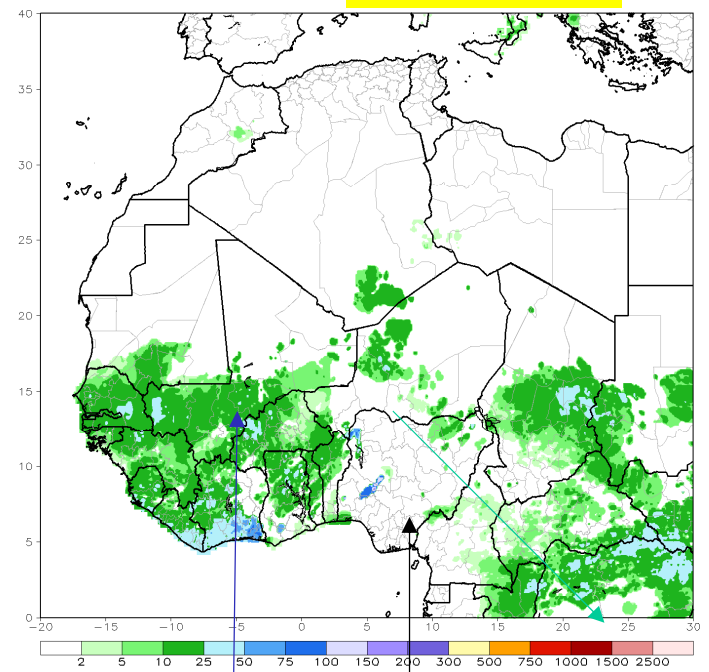
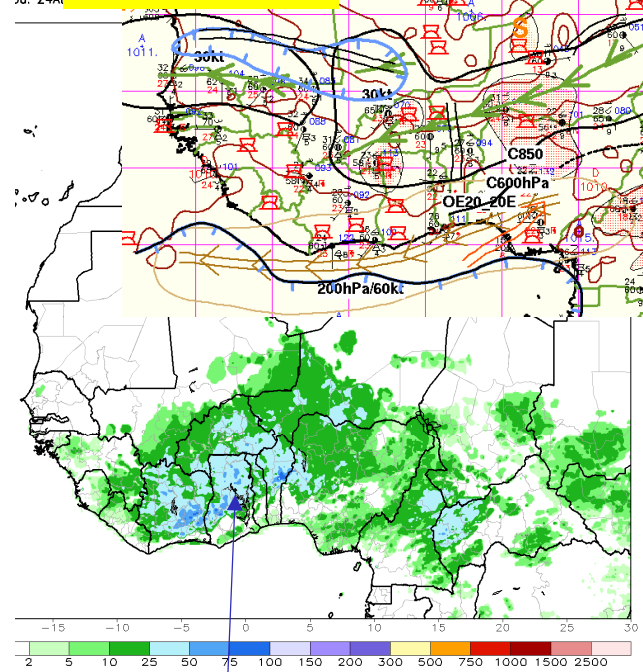
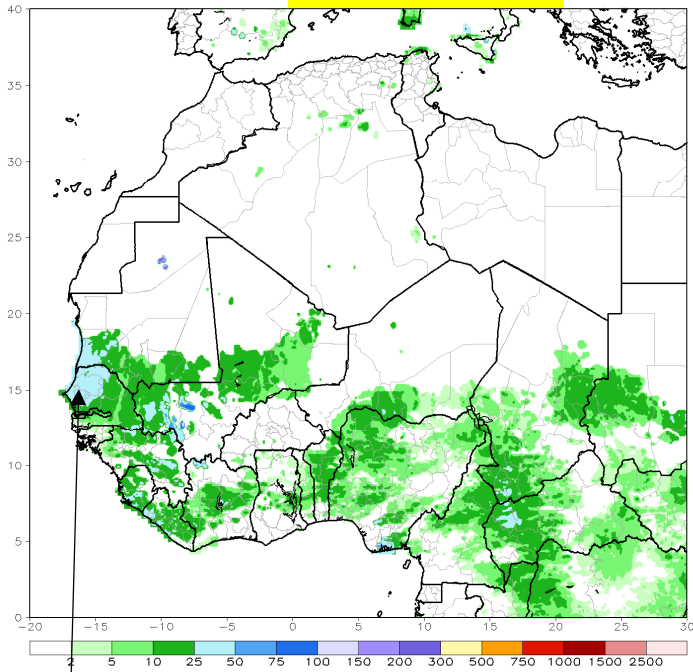


# Retour sur la prévision numérique des pluies lors des ondes d'est africaines n°19 et 20

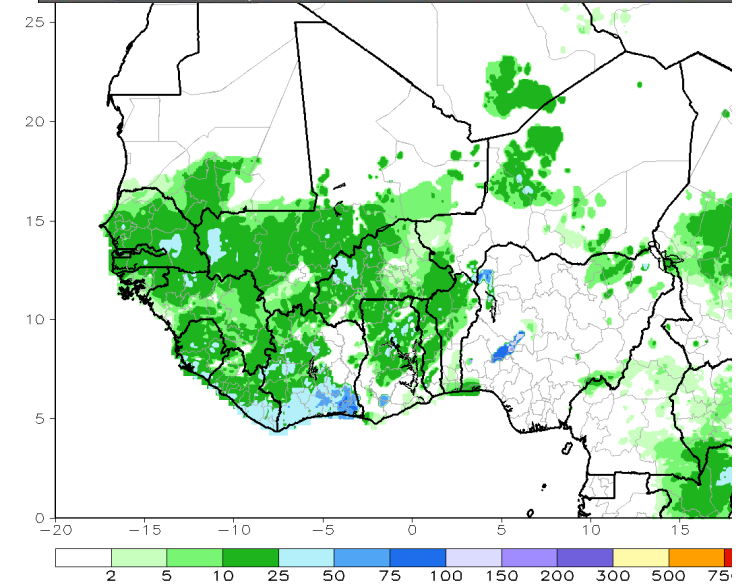
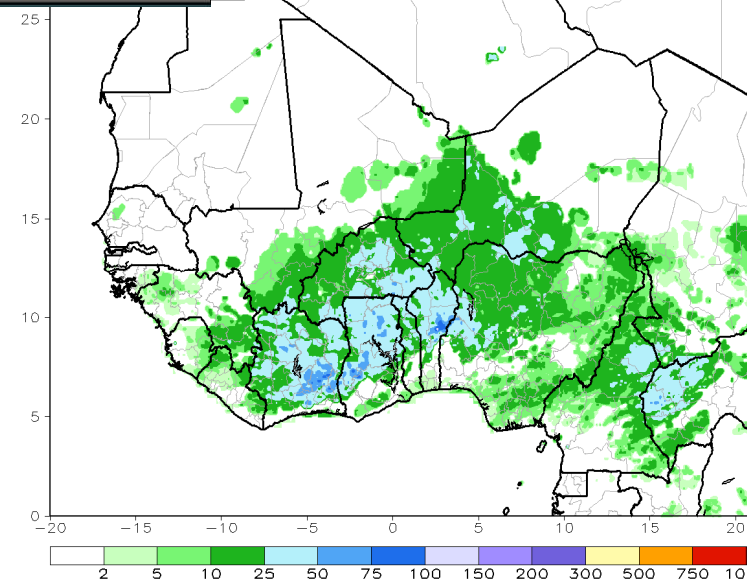
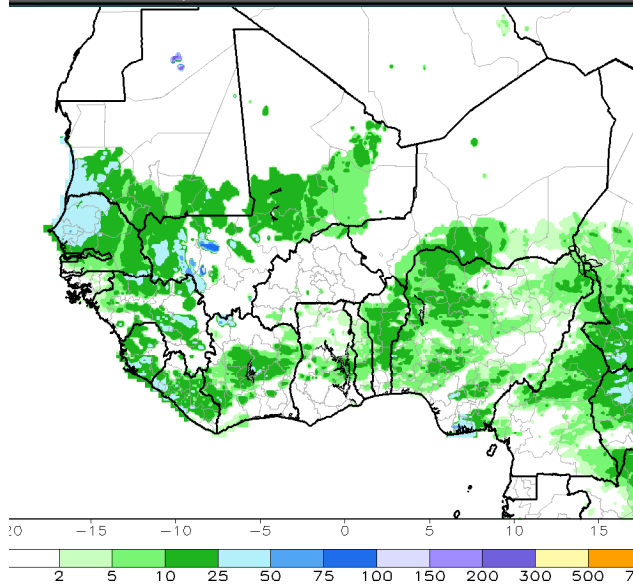
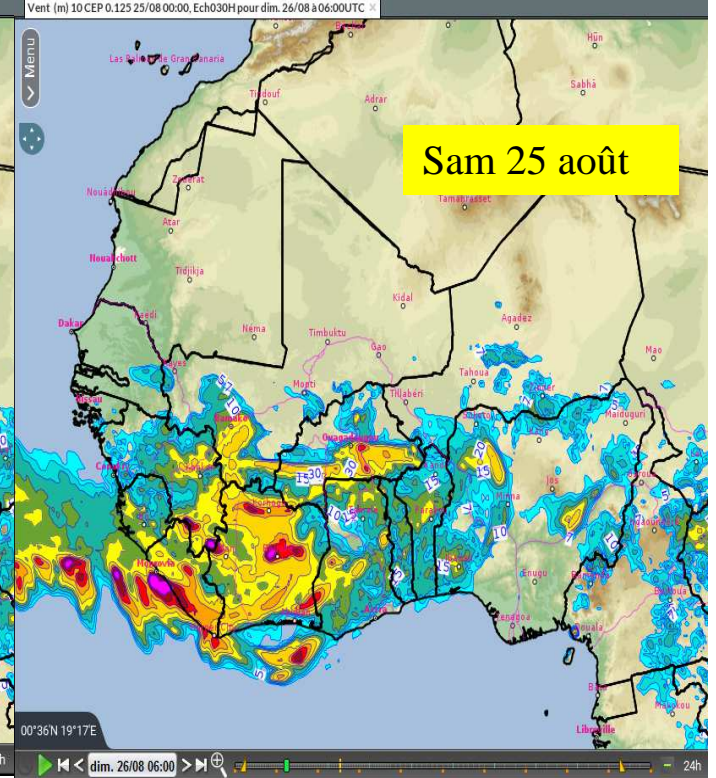
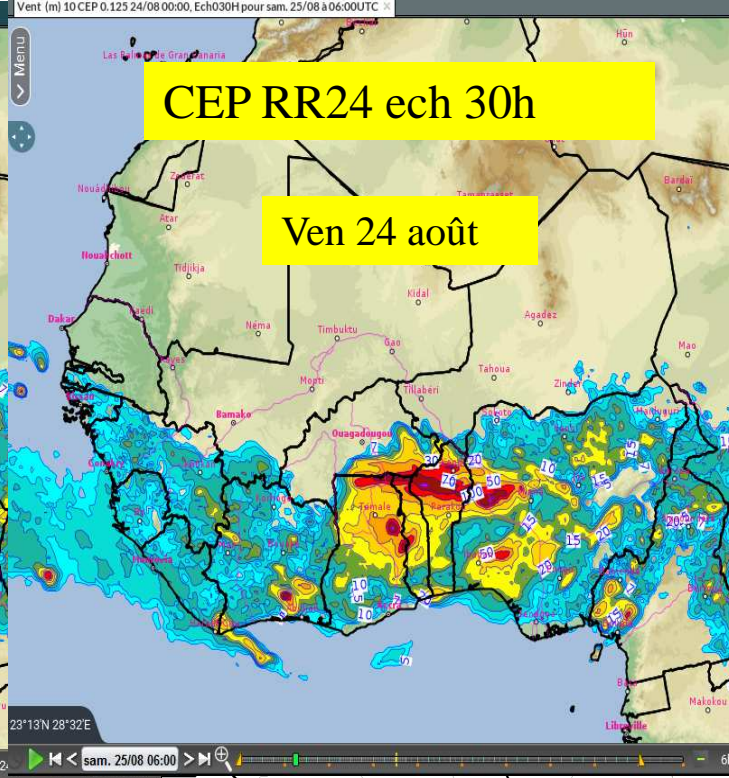
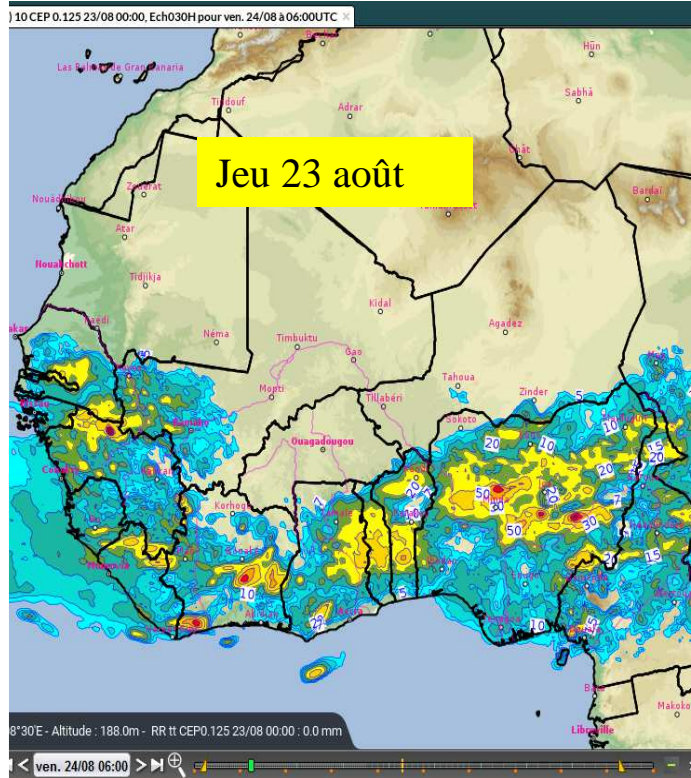
---

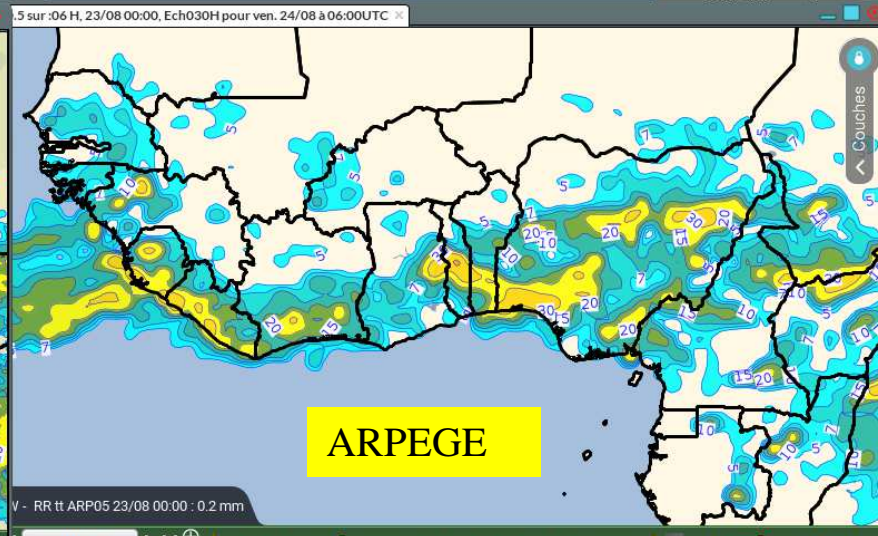
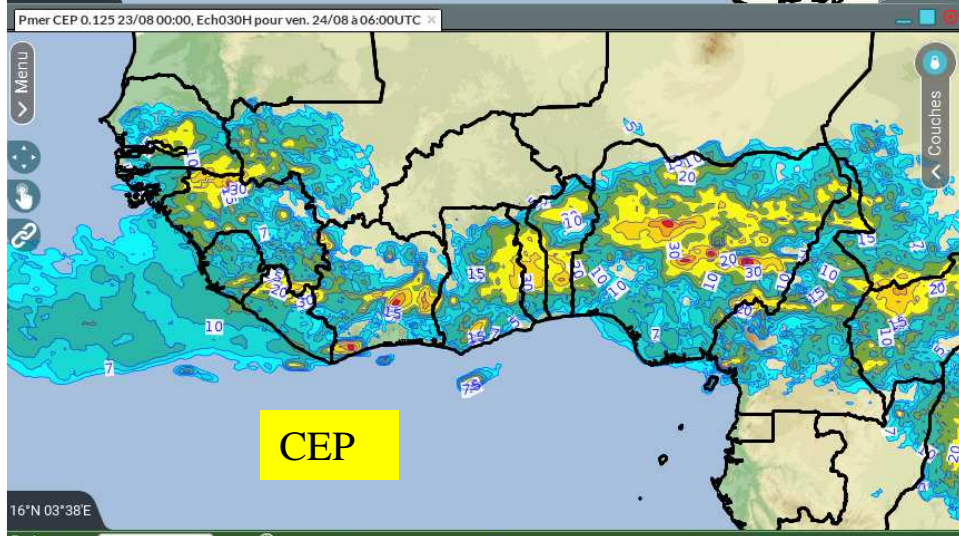
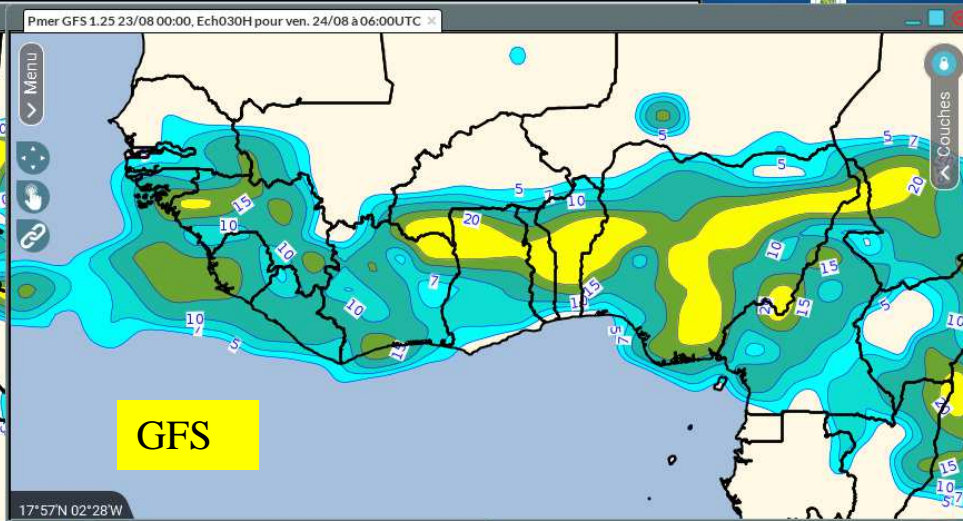
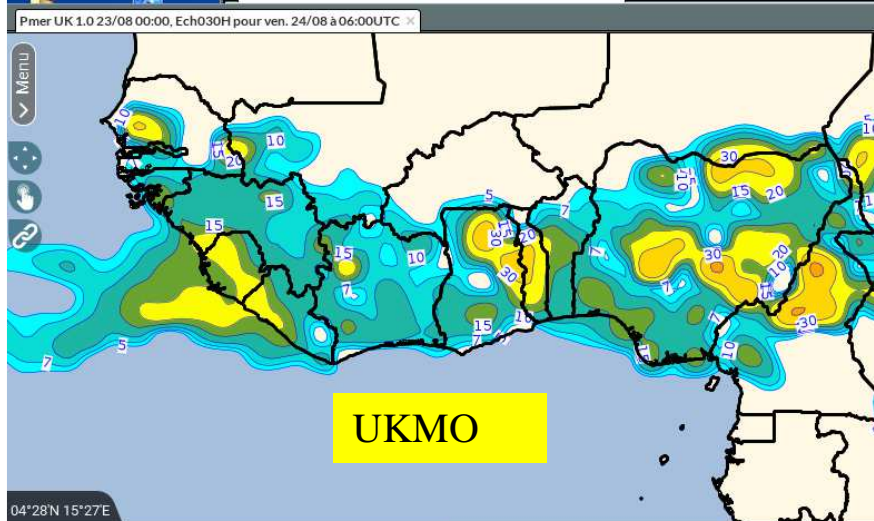
MISVA 2018

[Thierry.lefort@meteo.fr](mailto:Thierry.lefort@meteo.fr)

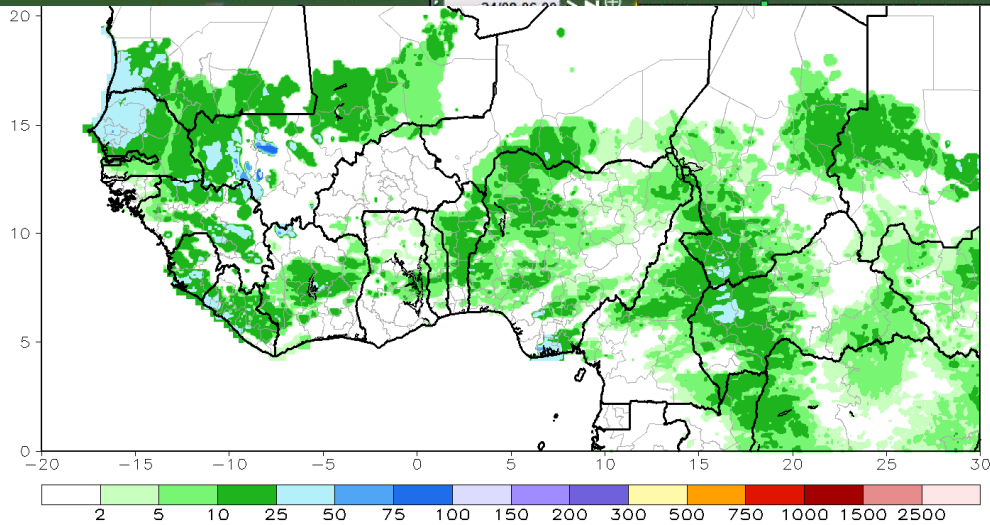


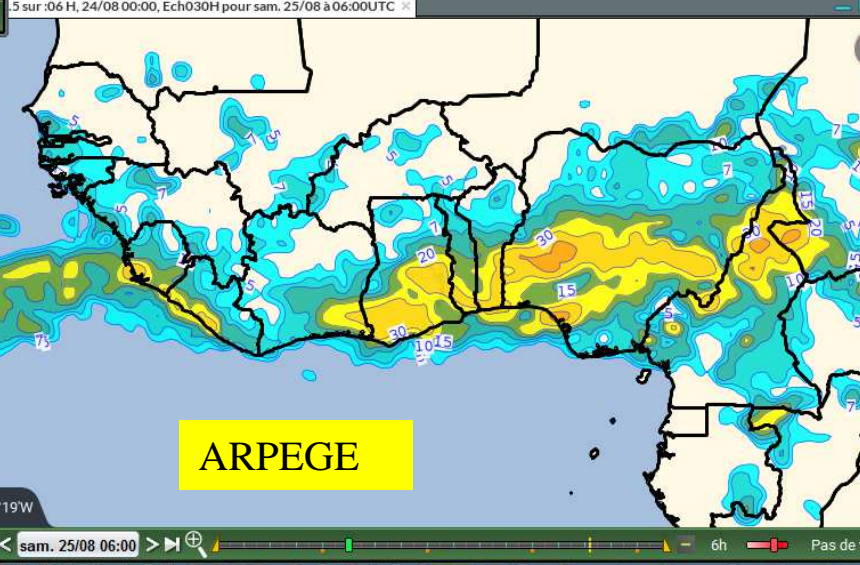
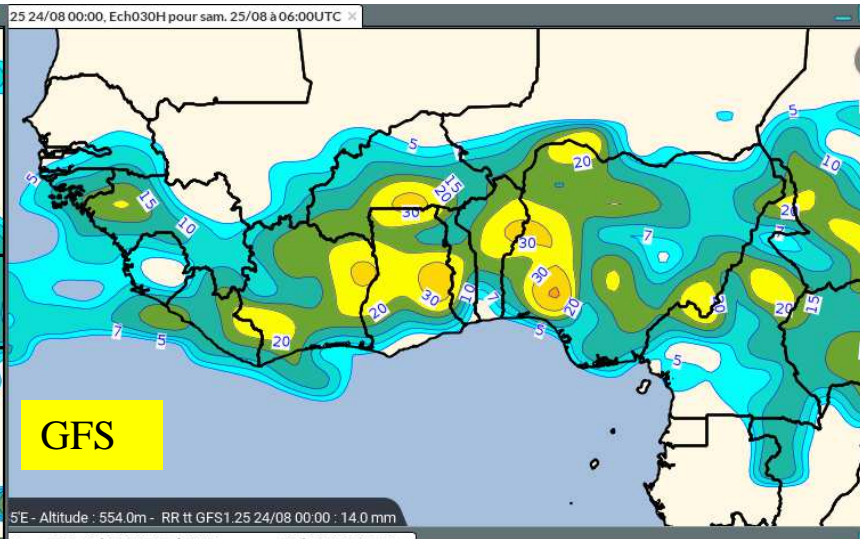
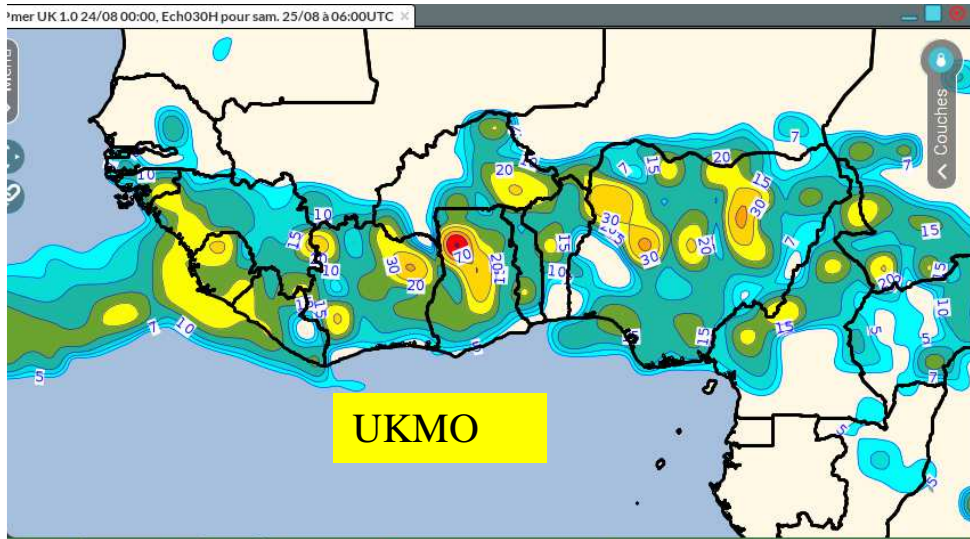
Une assez bonne cohérence entre le champ d'eau précipitable (*montré à 00UTC, en pratique intégré entre 18 et 06UTC*) et les pluies observées en 24h (*de 06 à 06UTC*)





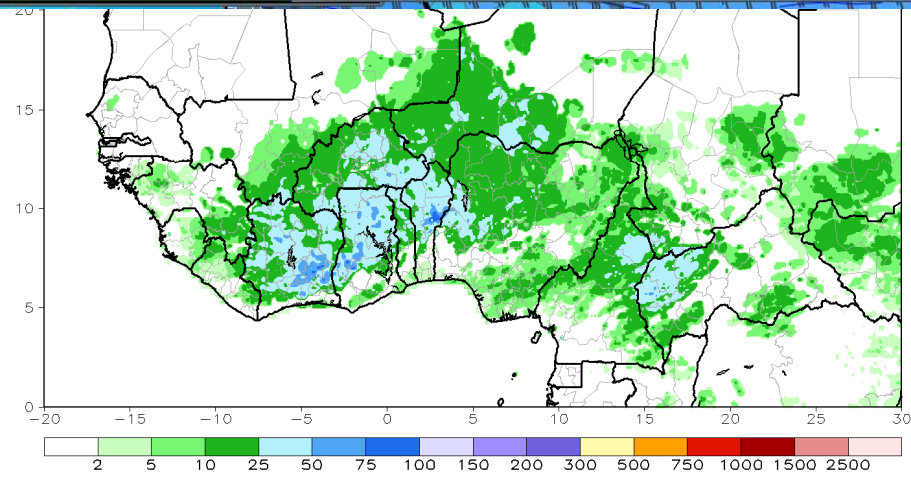
Jeu 23 août





Ven 24 août

Une assez bonne cohérence  
entre 18 et 06UTC) et les p



**ENM**  
TC, en pratique intégré

