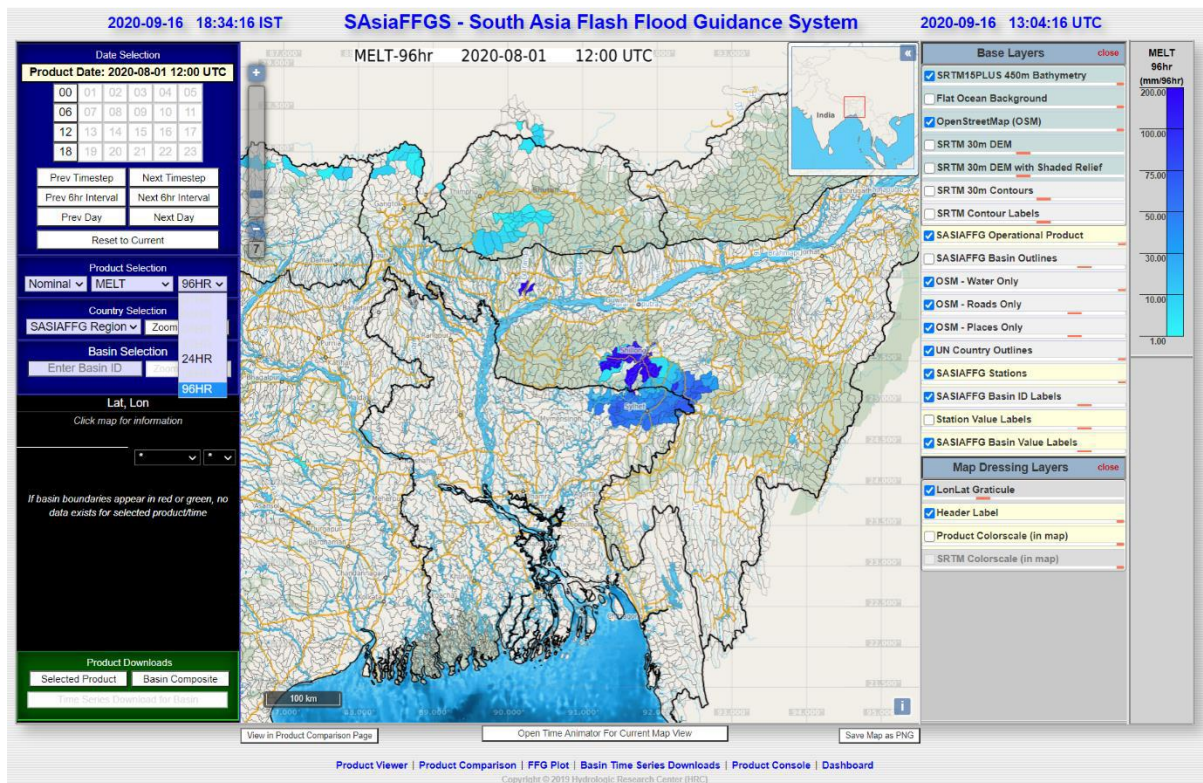


SNOW MELT

In flash flood forecasting, an accurate estimate of runoff from rainfall or snowmelt is one of the most important elements.

In FFGS, MELT is the estimate of ablation due to melt processes and is the direct output of the [SNOW-17 model](#). MELT product is estimated every six hours at the model runtimes of 00 UTC, 06 UTC, 12 UTC and 18 UTC. The product provides six-hour cumulative melt over periods of 24 and 96 hours.



Example of 96-hr MELT product

This document was prepared by WMO-FFGS team using South East Europe Flash Flood Guidance System Forecaster Guide¹, FFGS Operational Output Product Descriptions available in the FFGS Real-Time Product Console developed by the Hydrologic Research Center and National Oceanic and Atmospheric Administration (NOAA) materials and documents.

¹ https://www.wmo.int/pages/prog/hwrf/flood/ffgs/documents/SEFFGS_Forecaster_Guide-Final_ES_TM-AS-PM.pdf